

LEE COUNTY SURVEY MARK DESCRIPTION



SURVEY CONTROL BY:
DENI ASSOCIATES, INC.
FORT MYERS, FLORIDA

MAPPING BY:
WOOLPERT CONSULTANTS

DESIGNATION 1-09-46-27 (^{GPS} 9073) COUNTY LEE STATE FL

LOCATED IN SEC 09 TWP 46S RGE 27E USGS QUAD MAP CORKSCREW

TO REACH SURVEY MARK FROM THE INTERSECTION OF BELL BLVD & IMMOKALEE RD (SR 82) ; GO NORTHWESTERLY 0.55 mi ± ON IMMOKALEE RD ; THENCE SOUTH 2.5 mi ± TO MARK.

TYPE OF 3" DIAMETER ALUMINUM DISK IN CONCRETE 0.3 FT BELOW GROUND;
MARK "LEE COUNTY DENI ASSOCIATES 1990" DATE SET 1990

HORIZONTAL CONTROL ORIGINATED ON 1st ORDER HORIZONTAL CONTROL ORIGINATED ON _____ ORDER
CONTROL BASED ON FLORIDA HIGH PRECISION GPS NETWORK, CONTROL BY _____
ON NORTH AMERICAN DATUM OF 1983, 1990 ADJUSTMENT ON _____ DATUM
COORDINATES (FT), 1st ORDER COORDINATES (FT), _____ ORDER

NORTHING (Y) 785,822.403

NORTHING (Y) _____

EASTING (X) 781,707.164

EASTING (X) _____

GRID FLORIDA TRANSVERSE MERCATOR RECOVERED BY _____
ZONE WEST SCALE FACTOR ,999959 DATE, CONDITION _____

FIELD BOOK _____ PAGE _____

RECOVERY TIES

- NO. 1 2.0 FT TO WITNESS POST
- NO. 2 15.0 FT TO FENCE LINE
- NO. 3 24.0 FT TO CENTER OF TRAIL

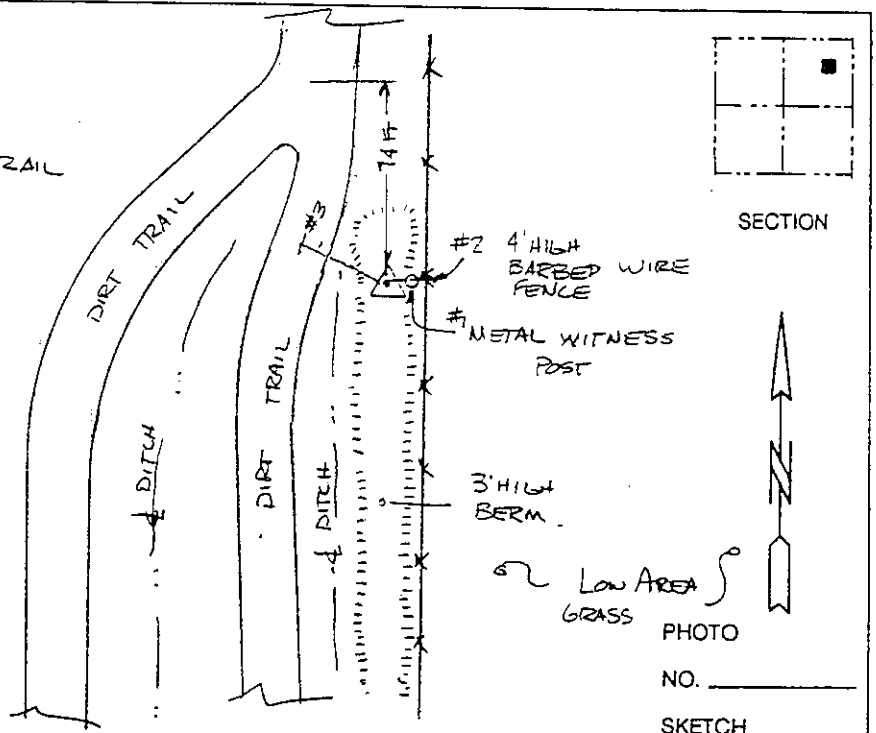


PHOTO NO. _____
SKETCH BY MDH

VERTICAL CONTROL ORIGINATED ON 2nd ORDER CONTROL ESTABLISHED BY _____ N. G. S. AND F. D. O. T.

ON NATIONAL GEODETIC VERTICAL DATUM OF 1929.

ELEVATION (FT) _____ 3rd ORDER LEVEL BOOK _____ PAGE _____