

# LEE COUNTY SURVEY MARK DESCRIPTION



SURVEY CONTROL BY:  
DENI ASSOCIATES, INC.  
FORT MYERS, FLORIDA

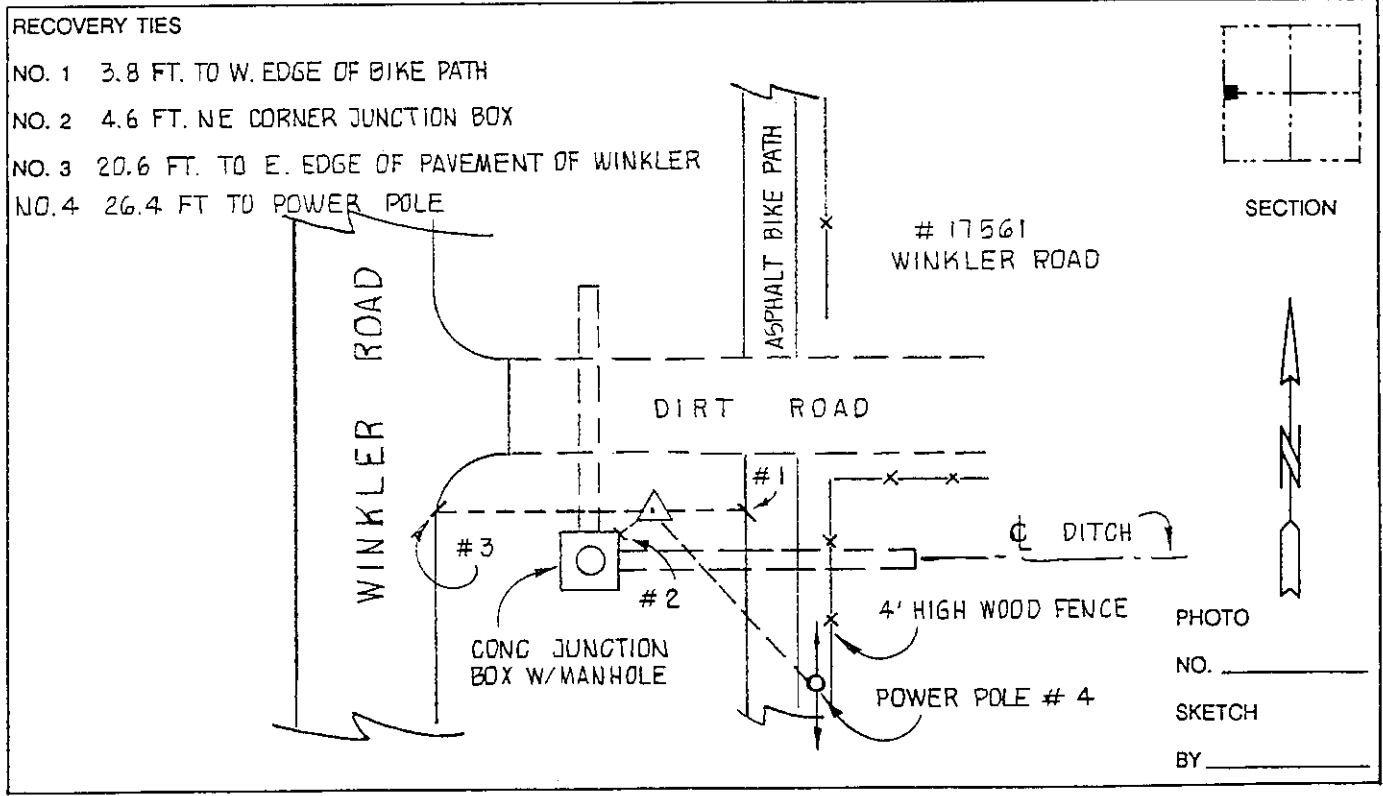
MAPPING BY:  
WOOLPERT CONSULTANTS

DESIGNATION GPS MUSSER AZIMUTH (9008) COUNTY LEE STATE FL  
 LOCATED IN SEC 10 TWP 46 S. RGE 24 E. USGS QUAD MAP FORT MYERS BEACH  
 TO REACH SURVEY MARK FROM INTERSECTION OF SUMMERLIN RD (C.R. 869) AND  
WINKLER ROAD GO SOUTH 1.8± MILES TO MARK.

TYPE OF 3" DIAMETER ALUMINUM DISC IN CONCRETE 0.4 FT. BELOW GROUND  
 MARK "LEE COUNTY DENI ASSOCIATES 1990" DATE SET 1990

HORIZONTAL CONTROL ORIGINATED ON 1st ORDER HORIZONTAL CONTROL ORIGINATED ON \_\_\_\_\_ ORDER  
 CONTROL BASED ON FLORIDA HIGH PRECISION GPS NETWORK, CONTROL BY \_\_\_\_\_  
 ON NORTH AMERICAN DATUM OF 1983, 1990 ADJUSTMENT ON \_\_\_\_\_ DATUM  
 COORDINATES (FT), 1st ORDER COORDINATES (FT), \_\_\_\_\_ ORDER  
 NORTHING (Y) 782,818.937 NORTHING (Y) \_\_\_\_\_  
 EASTING (X) 689,366.451 EASTING (X) \_\_\_\_\_

GRID FLORIDA TRANSVERSE MERCATOR RECOVERED BY \_\_\_\_\_  
 ZONE WEST SCALE FACTOR .999942 DATE, CONDITION \_\_\_\_\_  
 FIELD BOOK \_\_\_\_\_ PAGE \_\_\_\_\_



VERTICAL CONTROL ORIGINATED ON 2nd ORDER CONTROL ESTABLISHED BY N. G. S. AND F. D. O. T.  
 ON NATIONAL GEODETIC VERTICAL DATUM OF 1929.  
 ELEVATION (FT) \_\_\_\_\_ 3rd ORDER LEVEL BOOK \_\_\_\_\_ PAGE \_\_\_\_\_