

LEE COUNTY SURVEY MARK DESCRIPTION



SURVEY CONTROL BY:
DENI ASSOCIATES, INC.
FORT MYERS, FLORIDA

MAPPING BY:
WOOLPERT CONSULTANTS

DESIGNATION 2-36-45-27 ^(GPS 9071) COUNTY LEE STATE FL
 LOCATED IN SEC 36 TWP 45S RGE 27E USGS QUAD MAP ALVA 5E
 TO REACH SURVEY MARK FROM THE INTERSECTION OF NAPLES AVE & IMMOKALEE RD (SR 82); GO SOUTHEASTERLY ALONG IMMOKALEE RD 200 FEET ±.

TYPE OF 3" DIA. ALUMINUM DISK IN CONCRETE 0.1 FT BELOW GROUND;
 MARK "LEE COUNTY DENI ASSOCIATES 1990" DATE SET 1990

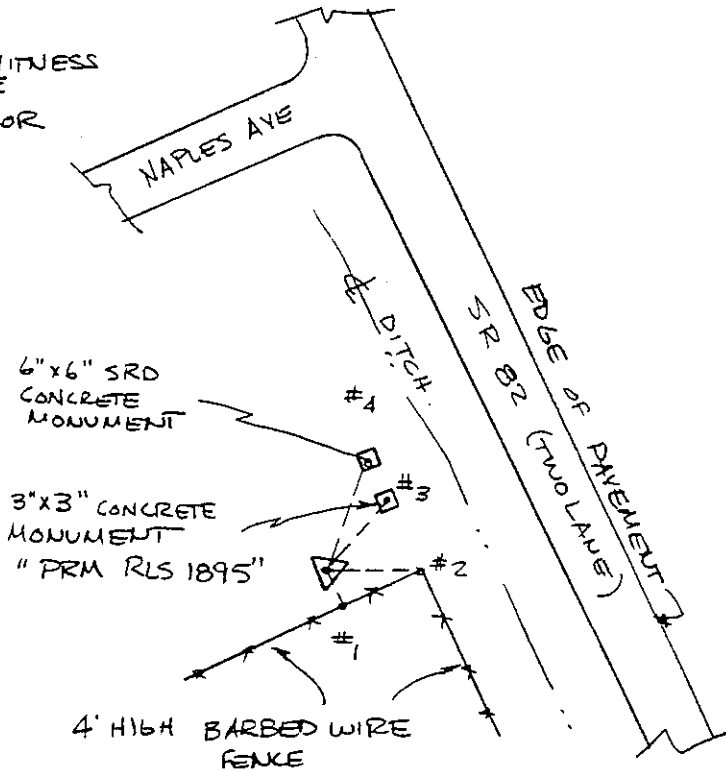
HORIZONTAL CONTROL ORIGINATED ON 1st ORDER HORIZONTAL CONTROL ORIGINATED ON _____ ORDER
 CONTROL BASED ON FLORIDA HIGH PRECISION GPS NETWORK, CONTROL BY _____
 ON NORTH AMERICAN DATUM OF 1983, 1990 ADJUSTMENT ON _____ DATUM
 COORDINATES (FT), 1st ORDER COORDINATES (FT), _____ ORDER
 NORTHING (Y) 794,270.508 NORTHING (Y) _____
 EASTING (X) 798,780.284 EASTING (X) _____

GRID FLORIDA TRANSVERSE MERCATOR RECOVERED BY _____
 ZONE WEST SCALE FACTOR ,999964 DATE, CONDITION _____

FIELD BOOK _____ PAGE _____

RECOVERY TIES

- NO. 1 1.6 FT TO METAL WITNESS POST @ FENCE LINE
- NO. 2 7.5 FT TO FENCE COR
- NO. 3 9.3 FT TO PRM
- NO. 4 12.0 FT TO SRD



SECTION

PHOTO NO. _____

SKETCH BY MDH

VERTICAL CONTROL ORIGINATED ON 2nd ORDER CONTROL ESTABLISHED BY N. G. S. AND F. D. O. T.

ON NATIONAL GEODETIC VERTICAL DATUM OF 1929.

ELEVATION (FT) _____ 3rd ORDER LEVEL BOOK _____ PAGE _____