

LEE COUNTY SURVEY MARK DESCRIPTION



SURVEY CONTROL BY:
DENI ASSOCIATES, INC.
FORT MYERS, FLORIDA

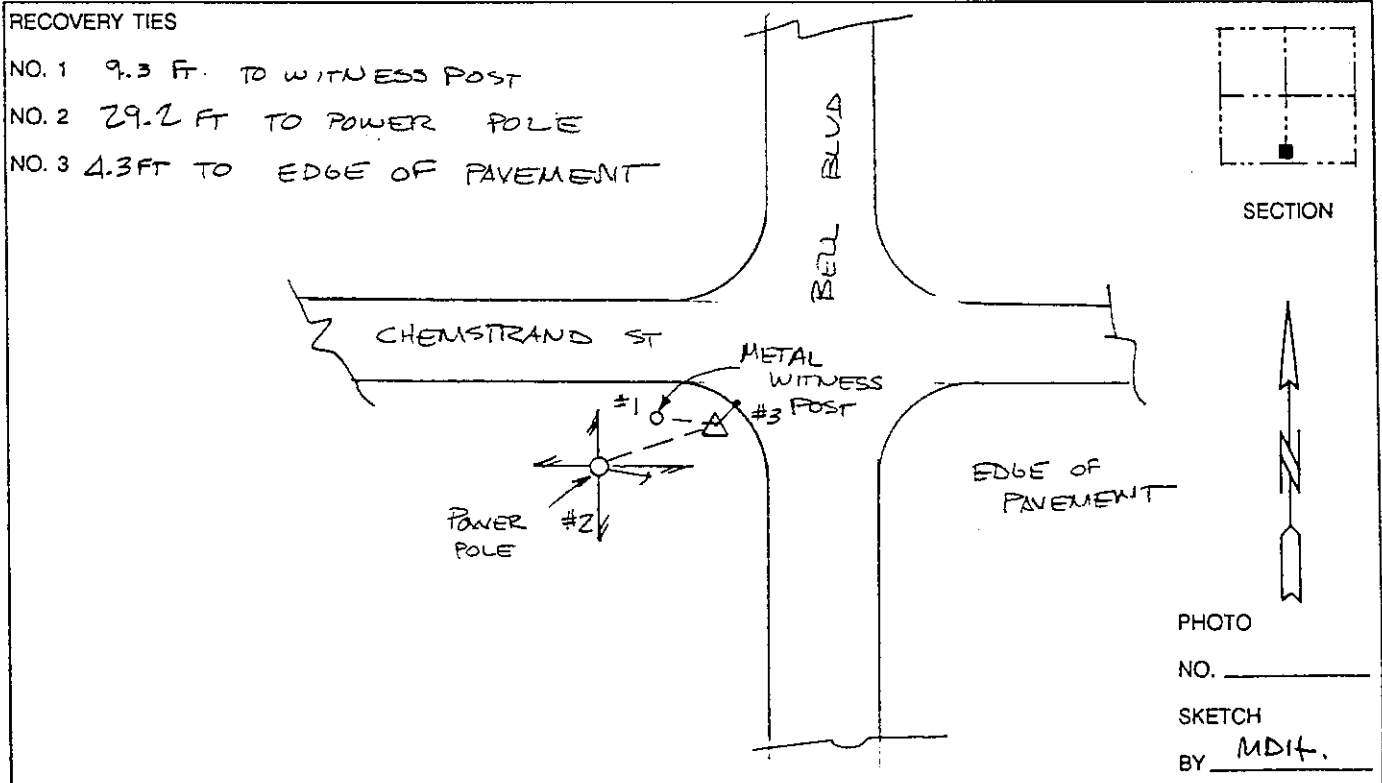
MAPPING BY:
WOOLPERT CONSULTANTS

DESIGNATION GPS CHEMSTRAND/LH 24 (9030) COUNTY LEE STATE FL
 LOCATED IN SEC 10 TWP 4SS RGE 27E USGS QUAD MAP ALVA SE
 TO REACH SURVEY MARK FROM THE INTERSECTION OF BELL BLVD & JOEL BOULEVARD. GO SOUTH 2.3 MI± ON BELL BLVD TO THE INTERSECTION OF BELL BLVD & CHEMSTRAND ST.

TYPE OF 3" DIAMETER ALUMINUM DISK IN CONCRETE 0.2 FT BELOW GROUND;
 MARK "LEE COUNTY DENI ASSOCIATES 1990" DATE SET 1990

HORIZONTAL CONTROL ORIGINATED ON 1st ORDER HORIZONTAL CONTROL ORIGINATED ON _____ ORDER
 CONTROL BASED ON FLORIDA HIGH PRECISION GPS NETWORK, CONTROL BY _____
 ON NORTH AMERICAN DATUM OF 1983, 1990 ADJUSTMENT ON _____ DATUM
 COORDINATES (FT), 1st ORDER COORDINATES (FT), _____ ORDER
 NORTHING (Y) 813,517.747 NORTHING (Y) _____
 EASTING (X) 785,299.281 EASTING (X) _____

GRID FLORIDA TRANSVERSE MERCATOR RECOVERED BY _____
 ZONE WEST SCALE FACTOR .9999960 DATE, CONDITION _____
 FIELD BOOK _____ PAGE _____



VERTICAL CONTROL ORIGINATED ON 2nd ORDER CONTROL ESTABLISHED BY N. G. S. AND F. D. O. T.
 ON NATIONAL GEODETIC VERTICAL DATUM OF 1929.
 ELEVATION (FT) _____ 3rd ORDER LEVEL BOOK _____ PAGE _____