

LEE COUNTY SURVEY MARK DESCRIPTION



SURVEY CONTROL BY:
DENI ASSOCIATES, INC.
FORT MYERS, FLORIDA

MAPPING BY:
WOOLPERT CONSULTANTS

DESIGNATION "NGS BUCK" (9002) COUNTY LEE STATE FL

LOCATED IN SEC 31 TWP 44 S RGE 26 E USGS QUAD MAP ALVA SW

TO REACH SURVEY MARK FROM THE INTERSECTION OF GUNNERY RD & IMMOKALEE RD (SR 82); GO NW'LY ON IMMOKALEE RD (SR 82) 2.7 MI TO ENTRANCE ROAD TO LEE MEMORIAL PARK.

TYPE OF 3 1/2" DIAMETER BRASS DISK IN 8" X 8" CONCRETE TABLET;
MARK "VSC 865 1956" NGS HIGH PRECISION MARK DATE SET RECOVERED 1990

HORIZONTAL CONTROL ORIGINATED ON 1st ORDER
CONTROL BASED ON FLORIDA HIGH PRECISION GPS NETWORK,
ON NORTH AMERICAN DATUM OF 1983, 1990 ADJUSTMENT
COORDINATES (FT), 1st ORDER

NORTHING (Y) 824,588.268
EASTING (X) 738,395.725

HORIZONTAL CONTROL ORIGINATED ON _____ ORDER
CONTROL BY _____
ON _____ DATUM
COORDINATES (FT), _____ ORDER

NORTHING (Y) _____
EASTING (X) _____

GRID FLORIDA TRANSVERSE MERCATOR
ZONE WEST SCALE FACTOR .999949

RECOVERED BY _____
DATE, CONDITION _____

FIELD BOOK _____ PAGE _____

RECOVERY TIES

- NO. 1 92.0 FT. TO CENTERLINE DRIVE
- NO. 2 76.2 FT. TO EDGE OF PAVEMENT
- NO. 3 1.4 FT. TO WITNESS POST
- NO. 4 24.0 FT. TO POWER POLE

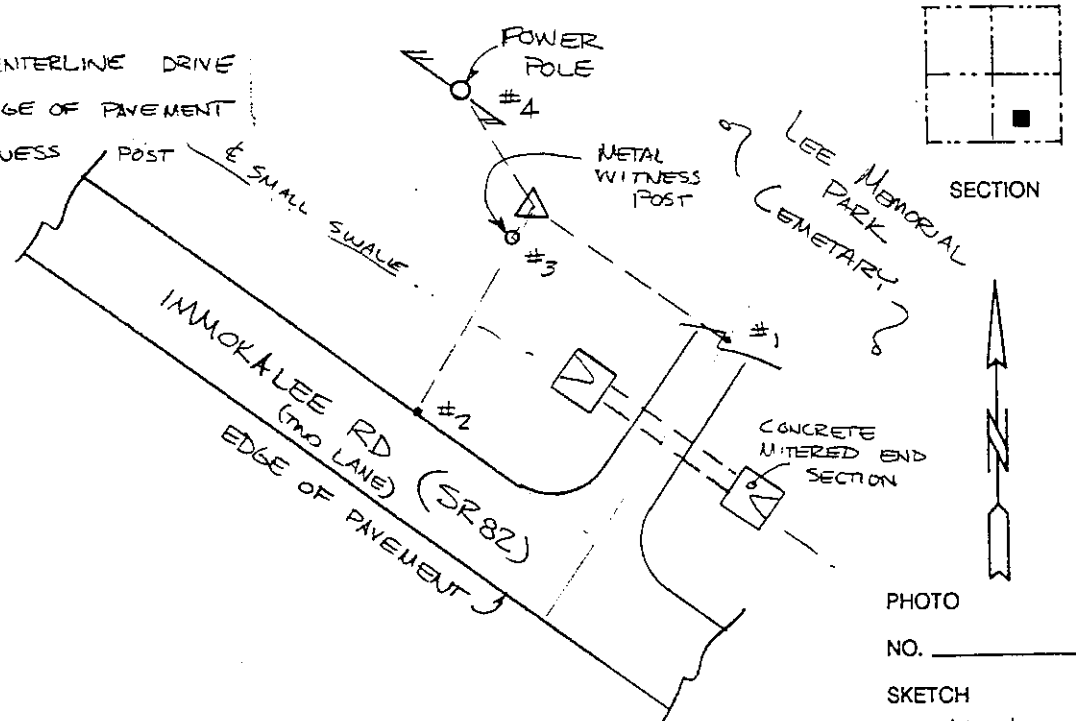


PHOTO NO. _____
SKETCH BY MDL

VERTICAL CONTROL ORIGINATED ON 2nd ORDER CONTROL ESTABLISHED BY N. G. S. AND F. D. O. T.

ON NATIONAL GEODETIC VERTICAL DATUM OF 1929.

ELEVATION (FT) _____ 3rd ORDER LEVEL BOOK _____ PAGE _____