

# LEE COUNTY SURVEY MARK DESCRIPTION



SURVEY CONTROL BY:  
DENI ASSOCIATES, INC.  
FORT MYERS, FLORIDA

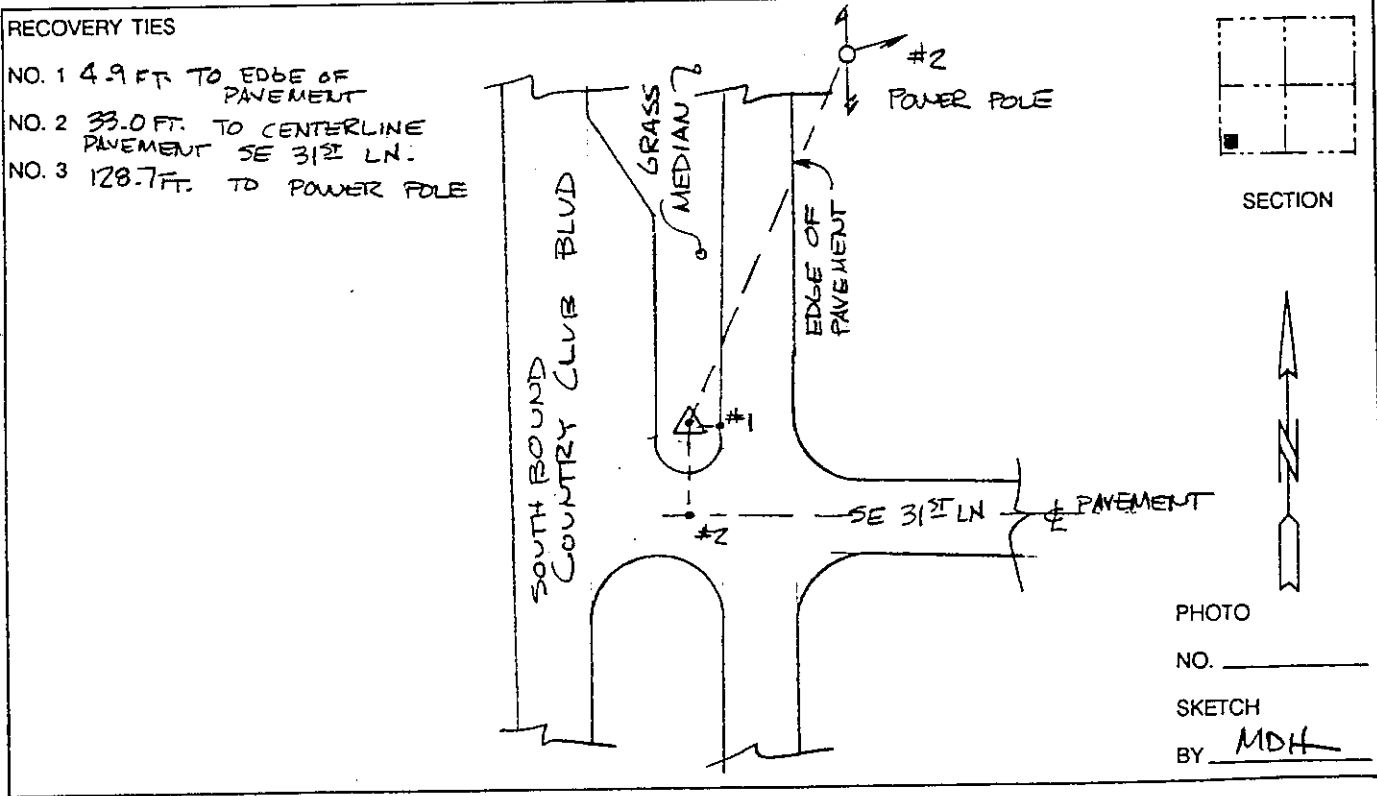
MAPPING BY:  
WOOLPERT CONSULTANTS

DESIGNATION 3-31-44-24 (<sup>GPS</sup> 9063) COUNTY LEE STATE FL  
 LOCATED IN SEC 31 TWP 44S RGE 24E USGS QUAD MAP FORT MYERS SW  
 TO REACH SURVEY MARK FROM \_\_\_\_\_  
AT THE INTERSECTION AS SHOWN IN CAPE CORAL.

TYPE OF 3" DIA. ALUM. LEE COUNTY DISK SET IN CONCRETE  
 MARK 0.4' BELOW GROUND. DATE SET 1990

HORIZONTAL CONTROL ORIGINATED ON 1st ORDER HORIZONTAL CONTROL ORIGINATED ON \_\_\_\_\_ ORDER  
 CONTROL BASED ON FLORIDA HIGH PRECISION GPS NETWORK, CONTROL BY \_\_\_\_\_  
 ON NORTH AMERICAN DATUM OF 1983, 1990 ADJUSTMENT ON \_\_\_\_\_ DATUM  
 COORDINATES (FT), 1st ORDER COORDINATES (FT), \_\_\_\_\_ ORDER  
 NORTHING (Y) 821,422.281 NORTHING (Y) \_\_\_\_\_  
 EASTING (X) 670,400.331 EASTING (X) \_\_\_\_\_

GRID FLORIDA TRANSVERSE MERCATOR RECOVERED BY \_\_\_\_\_  
 ZONE WEST SCALE FACTOR 999941 DATE, CONDITION \_\_\_\_\_  
 FIELD BOOK \_\_\_\_\_ PAGE \_\_\_\_\_



VERTICAL CONTROL ORIGINATED ON 2nd ORDER CONTROL ESTABLISHED BY \_\_\_\_\_ N. G. S. AND F. D. O. T.  
 ON NATIONAL GEODETIC VERTICAL DATUM OF 1929.  
 ELEVATION (FT) \_\_\_\_\_, 3rd ORDER LEVEL BOOK \_\_\_\_\_ PAGE \_\_\_\_\_