

# LEE COUNTY SURVEY MARK DESCRIPTION



SURVEY CONTROL BY:  
DENI ASSOCIATES, INC.  
FORT MYERS, FLORIDA

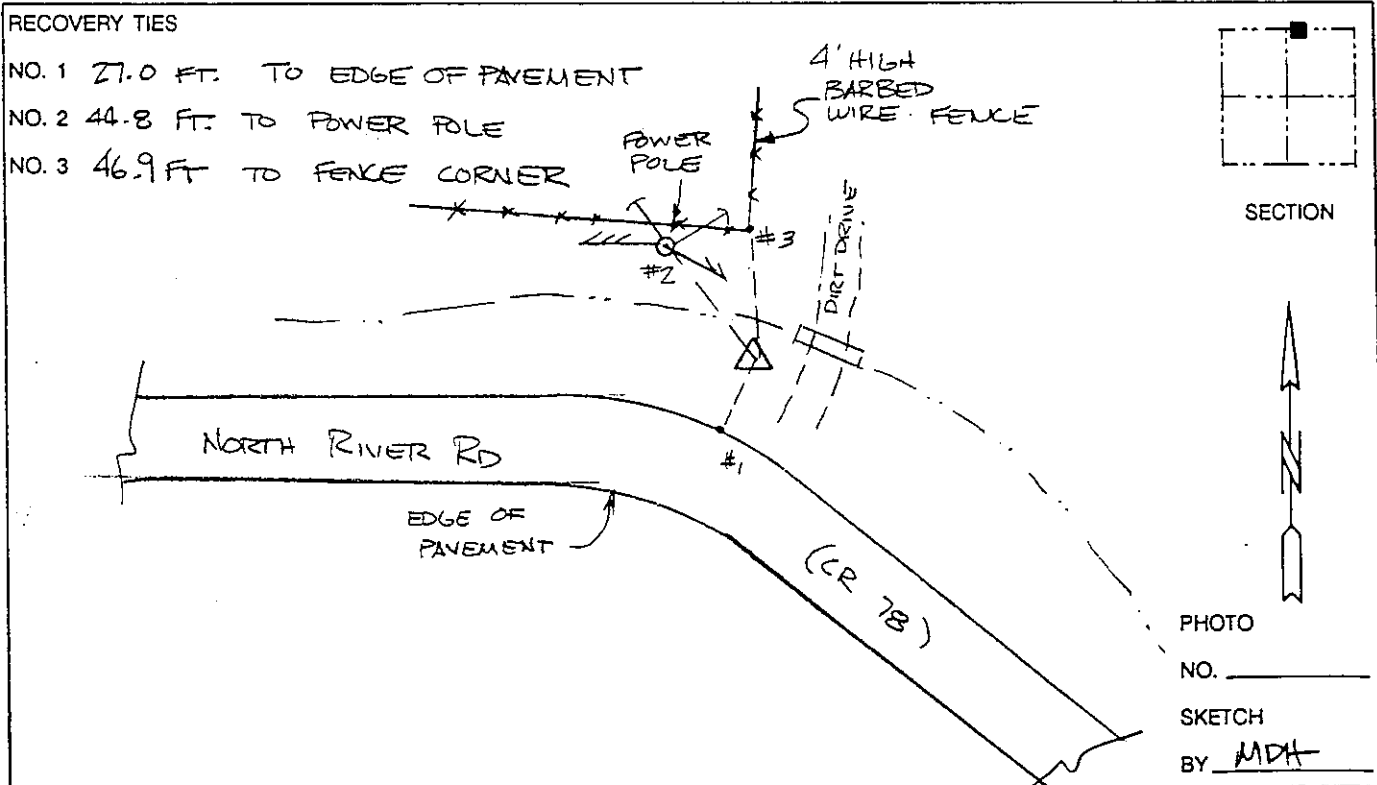
MAPPING BY:  
WOOLPERT CONSULTANTS

DESIGNATION GPS U.S.C.E. FCE 4028 (9028) COUNTY LEE STATE FL  
 LOCATED IN SEC 21 TWP 43S RGE 27E USGS QUAD MAP ALVA  
 TO REACH SURVEY MARK FROM THE INTERSECTION OF STATE RD 31 & CR 78  
(NORTH RIVER ROAD) ; GO EAST 9.0 MI ± ON CR 78

TYPE OF 3 1/2" DIAMETER BRASS DISK IN CONK ; "VS ARMY CORPS OF ENGINEERS  
 MARK FCE 4028 1987" - EXISTING DATE SET GPS 1990

HORIZONTAL CONTROL ORIGINATED ON 1st ORDER HORIZONTAL CONTROL ORIGINATED ON \_\_\_\_\_ ORDER  
 CONTROL BASED ON FLORIDA HIGH PRECISION GPS NETWORK, CONTROL BY \_\_\_\_\_  
 ON NORTH AMERICAN DATUM OF 1983, 1990 ADJUSTMENT ON \_\_\_\_\_ DATUM  
 COORDINATES (FT), 1st ORDER COORDINATES (FT), \_\_\_\_\_ ORDER  
 NORTHING (Y) 869,710,939 NORTHING (Y) \_\_\_\_\_  
 EASTING (X) 779,523,245 EASTING (X) \_\_\_\_\_

GRID FLORIDA TRANSVERSE MERCATOR RECOVERED BY DENI ASSOCIATES  
 ZONE WEST SCALE FACTOR .999959 DATE, CONDITION 2-91  
 FIELD BOOK \_\_\_\_\_ PAGE \_\_\_\_\_ GOOD



VERTICAL CONTROL ORIGINATED ON 2nd ORDER CONTROL ESTABLISHED BY N. G. S. AND F. D. O. T.  
 ON NATIONAL GEODETIC VERTICAL DATUM OF 1929.  
 ELEVATION (FT) \_\_\_\_\_ 3rd ORDER LEVEL BOOK \_\_\_\_\_ PAGE 308