

LEE COUNTY SURVEY MARK DESCRIPTION



SURVEY CONTROL BY:
DENI ASSOCIATES, INC.
FORT MYERS, FLORIDA

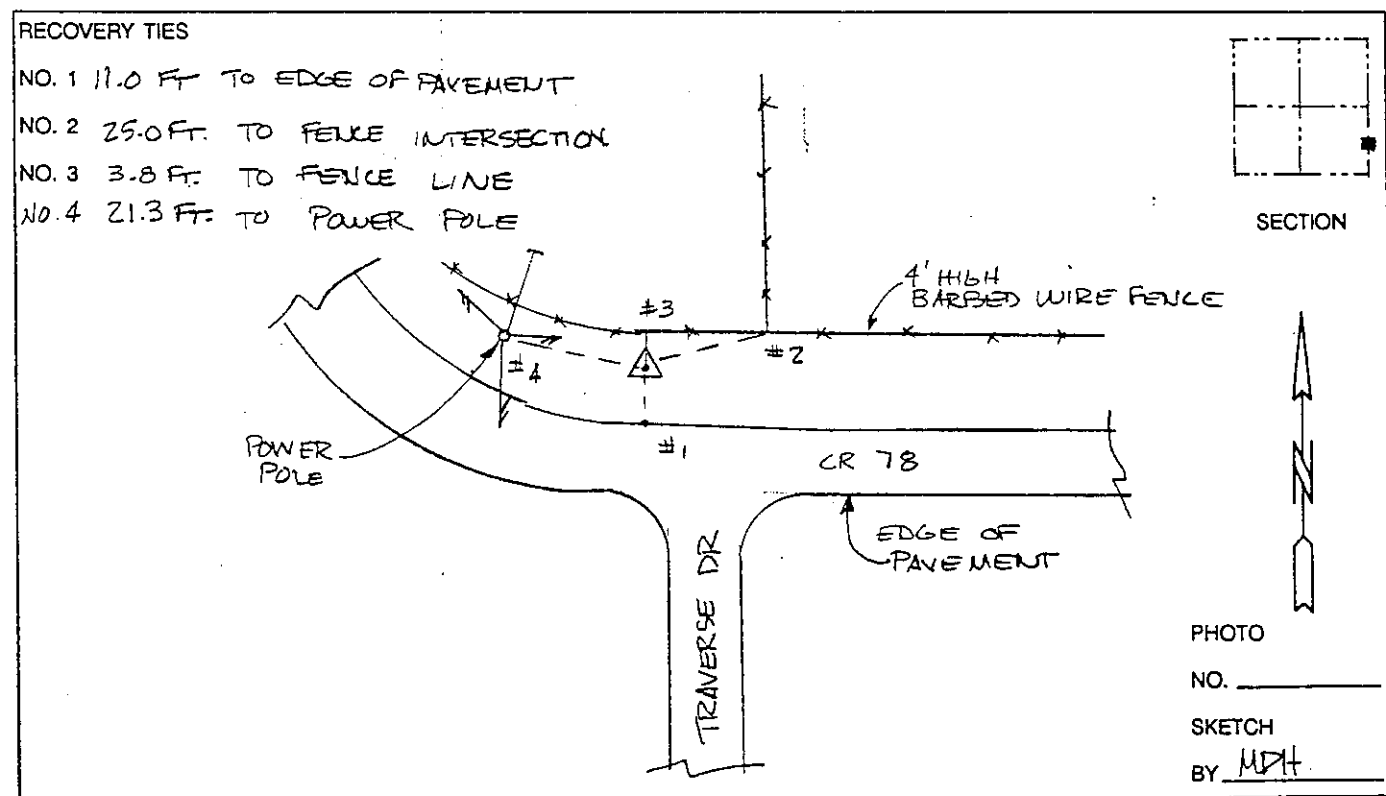
MAPPING BY:
WOOLPERT CONSULTANTS

DESIGNATION GPS U.S.C.E. FCE 4017 (9027) COUNTY LEE STATE FL
 LOCATED IN SEC 15 TWP 43S RGE 26E USGS QUAD MAP OLGA
 TO REACH SURVEY MARK FROM INTERSECTION OF SR 31 & CR 78 (WORTH RIVER RD) 1.60 EAST 4.3 MI ± ON CR 78 TO TRAVERSE DR.

TYPE OF 3 1/2" DIAMETER BRASS DISK IN CONCRETE; "US ARMY CORPS OF MARK ENGINEERS FCE 4017 1987" - EXISTING DATE SET GPS 1990

HORIZONTAL CONTROL ORIGINATED ON 1st ORDER HORIZONTAL CONTROL ORIGINATED ON _____ ORDER
 CONTROL BASED ON FLORIDA HIGH PRECISION GPS NETWORK, CONTROL BY _____
 ON NORTH AMERICAN DATUM OF 1983, 1990 ADJUSTMENT ON _____ DATUM
 COORDINATES (FT), 1st ORDER COORDINATES (FT), _____ ORDER
 NORTHING (Y) 870,724,257 NORTHING (Y) _____
 EASTING (X) 755,150,225 EASTING (X) _____

GRID FLORIDA TRANSVERSE MERCATOR RECOVERED BY DENI ASSOCIATES
 ZONE WEST SCALE FACTOR .999952 DATE, CONDITION 2-91
 FIELD BOOK _____ PAGE _____ GOOD



VERTICAL CONTROL ORIGINATED ON 2nd ORDER CONTROL ESTABLISHED BY N. G. S. AND F. D. O. T.
 ON NATIONAL GEODETIC VERTICAL DATUM OF 1929.
 ELEVATION (FT) _____ 3rd ORDER LEVEL BOOK _____ PAGE _____