

# LEE COUNTY SURVEY MARK DESCRIPTION



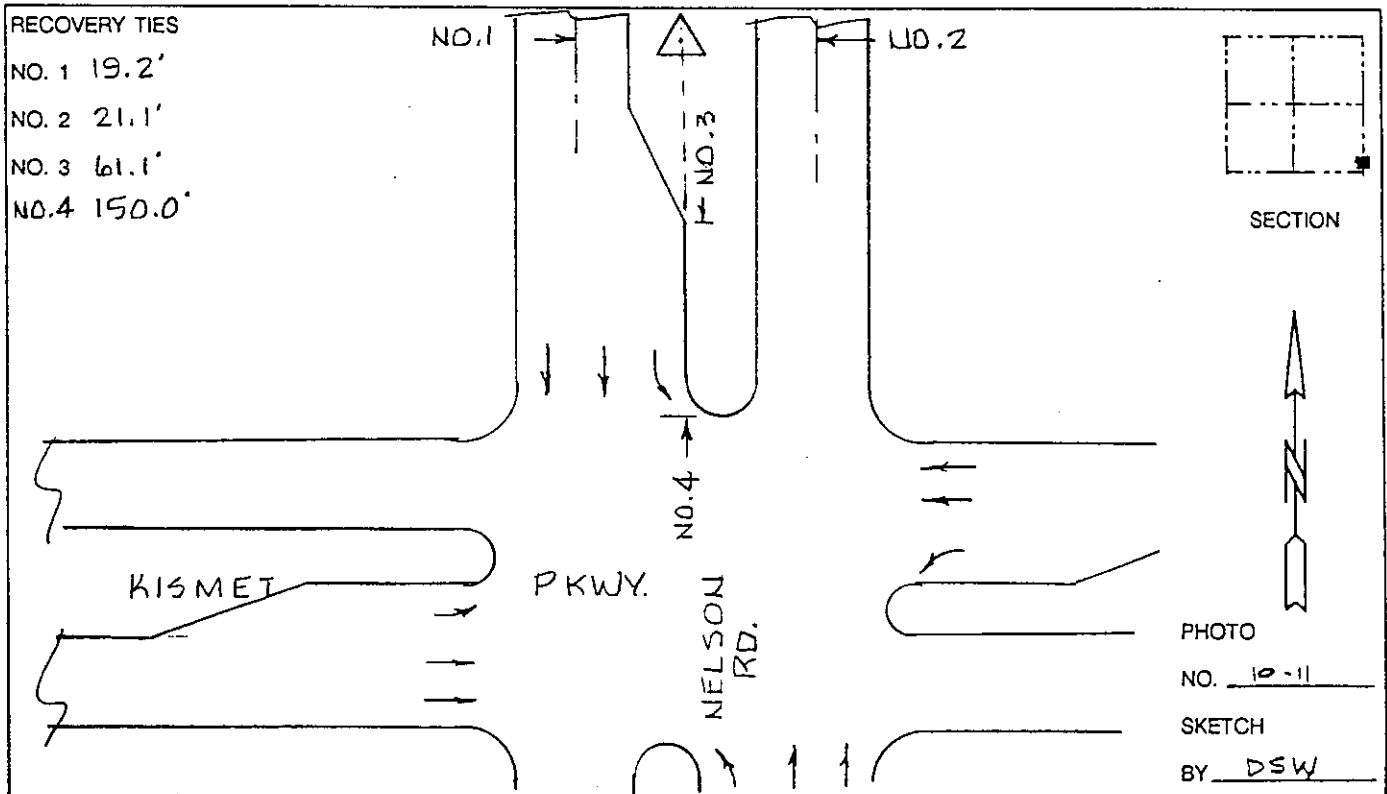
SURVEY CONTROL BY:  
DENI ASSOCIATES, INC.  
FORT MYERS, FLORIDA

MAPPING BY:  
WOOLPERT CONSULTANTS

DESIGNATION GPS HOLT (GPS 9033) COUNTY LEE STATE FL  
 LOCATED IN SEC 27 TWP 43 S RGE 23 E USGS QUAD MAP FT. MYERS N.W.  
 TO REACH SURVEY MARK FROM PINE ISLAND RD. & NELSON RD. IN CAPE CORAL:  
GO N. ON NELSON RD. 3.5 MI. TO KISMET PKWY.

TYPE OF 3" ALUM. LEE CO. DISK IN CONC., 1" BLW. GRD.  
 MARK STAMPED "GPS HOLT" DATE SET MAR 24 1990

HORIZONTAL CONTROL ORIGINATED ON 1st ORDER HORIZONTAL CONTROL ORIGINATED ON \_\_\_\_\_ ORDER  
 CONTROL BASED ON FLORIDA HIGH PRECISION GPS NETWORK, CONTROL BY \_\_\_\_\_  
 ON NORTH AMERICAN DATUM OF 1983, 1990 ADJUSTMENT ON \_\_\_\_\_ DATUM  
 COORDINATES (FT), 1st ORDER COORDINATES (FT), \_\_\_\_\_ ORDER  
 NORTHING (Y) 859,190,754 NORTHING (Y) \_\_\_\_\_  
 EASTING (X) 659,368,497 EASTING (X) \_\_\_\_\_  
 GRID FLORIDA TRANSVERSE MERCATOR RECOVERED BY \_\_\_\_\_  
 ZONE WEST SCALE FACTOR .999941 DATE, CONDITION \_\_\_\_\_  
 FIELD BOOK \_\_\_\_\_ PAGE \_\_\_\_\_



VERTICAL CONTROL ORIGINATED ON 2nd ORDER CONTROL ESTABLISHED BY N. G. S. AND F. D. O. T.  
 ON NATIONAL GEODETIC VERTICAL DATUM OF 1929.  
 ELEVATION (FT) 14.19, 3rd ORDER LEVEL BOOK V22 PAGE 9