

LEE COUNTY SURVEY MARK DESCRIPTION



SURVEY CONTROL BY:
DENI ASSOCIATES, INC.
FORT MYERS, FLORIDA

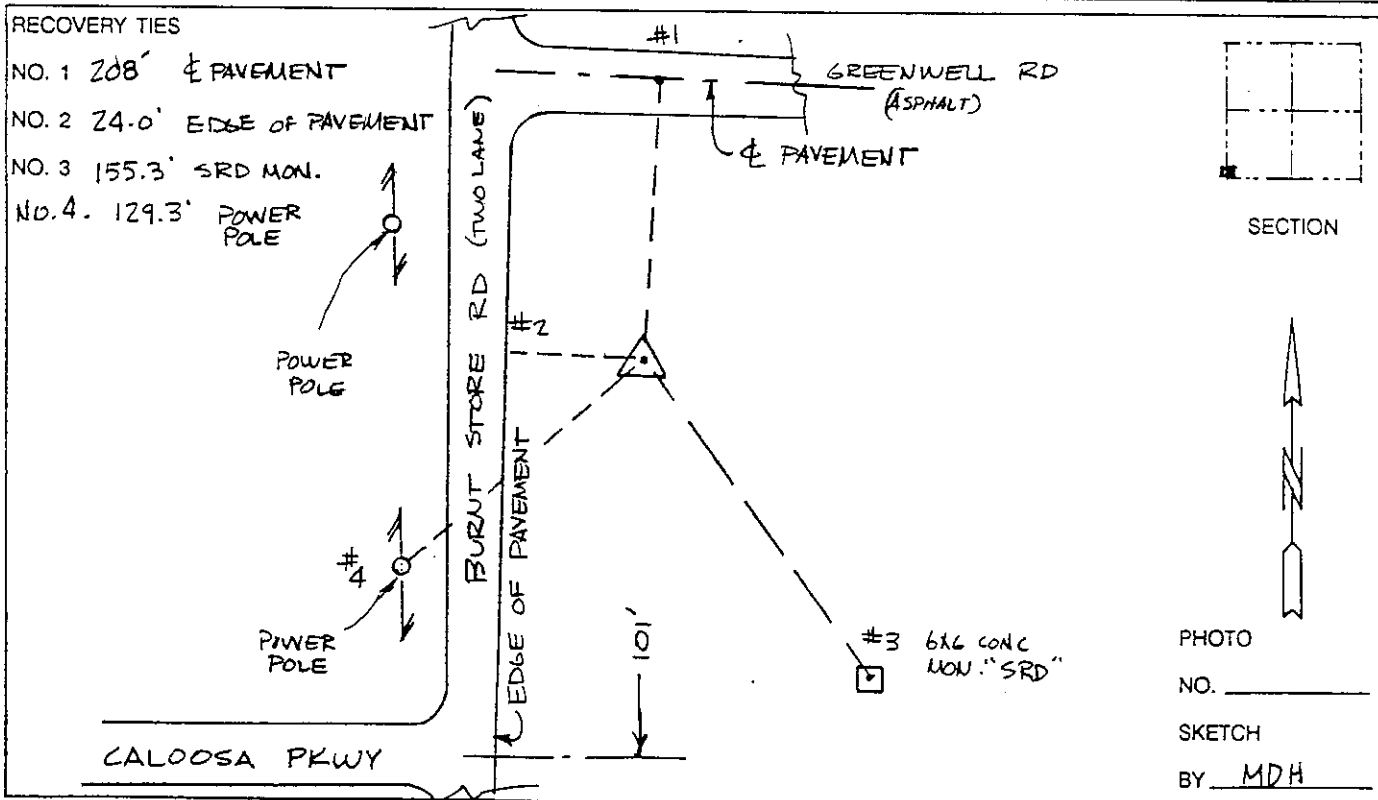
MAPPING BY:
WOOLPERT CONSULTANTS

DESIGNATION F.D.O.T. 12 88 A36 (9034) COUNTY LEE STATE FL
 LOCATED IN SEC 17 TWP 43S. RGE 23E. USGS QUAD MAP MATLACHA
 TO REACH SURVEY MARK FROM THE INTERSECTION OF PINE ISLAND RD &
BURNT STORE RD GO NORTH 6.0 MI± ALONG BURNT STORE
RD.

TYPE OF 4X4 CONC. MON. FL DOT SURVEY MARKER
 MARK W/ 4" BRASS DISK - FLUSH, EXISTING DATE SET MARCH 1991

HORIZONTAL CONTROL ORIGINATED ON 1st ORDER HORIZONTAL CONTROL ORIGINATED ON _____ ORDER
 CONTROL BASED ON FLORIDA HIGH PRECISION GPS NETWORK, CONTROL BY _____
 ON NORTH AMERICAN DATUM OF 1983, 1990 ADJUSTMENT ON _____ DATUM
 COORDINATES (FT), 1st ORDER COORDINATES (FT), _____ ORDER
 NORTHING (Y) 859,825.846 NORTHING (Y) _____
 EASTING (X) 643,413.343 EASTING (X) _____

GRID FLORIDA TRANSVERSE MERCATOR MARK RECOVERED BY DENI ASSOCIATES
 ZONE WEST SCALE FACTOR 999941 DATE, CONDITION 2-91
 FIELD BOOK _____ PAGE _____ GOOD



VERTICAL CONTROL ORIGINATED ON 2nd ORDER CONTROL ESTABLISHED BY N. G. S. AND F. D. O. T.
 ON NATIONAL GEODETIC VERTICAL DATUM OF 1929.
 ELEVATION (FT) _____, 3rd ORDER LEVEL BOOK _____ PAGE _____