

LEE COUNTY SURVEY MARK DESCRIPTION



SURVEY CONTROL BY:
DENI ASSOCIATES, INC.
FORT MYERS, FLORIDA

MAPPING BY:
WOOLPERT CONSULTANTS

DESIGNATION 1-03-43-23 ^(GPS 9082) COUNTY LEE STATE FL
 LOCATED IN SEC 3 TWP 43S RGE 23E USGS QUAD MAP GILCHRIST
 TO REACH SURVEY MARK FROM THE INTERSECTION OF BURNT STORE ROAD (SR 765)
& ZEMEL RD; GO EAST 1.1 MI ± ON ZEMEL RD; THENCE SOUTH
ON DIRT TRAIL 3.0 MI ± TO MARK.

TYPE OF 3" DIAMETER ALUMINUM DISK IN CONCRETE 0.2 FT BELOW GROUND;
 MARK "LEE COUNTY DENI ASSOCIATES 990" DATE SET 1990

HORIZONTAL CONTROL ORIGINATED ON 1st ORDER HORIZONTAL CONTROL ORIGINATED ON _____ ORDER
 CONTROL BASED ON FLORIDA HIGH PRECISION GPS NETWORK, CONTROL BY _____
 ON NORTH AMERICAN DATUM OF 1983, 1990 ADJUSTMENT ON _____ DATUM
 COORDINATES (FT), 1st ORDER COORDINATES (FT), _____ ORDER

NORTHING (Y) 885,416.156
 EASTING (X) 658,034.804

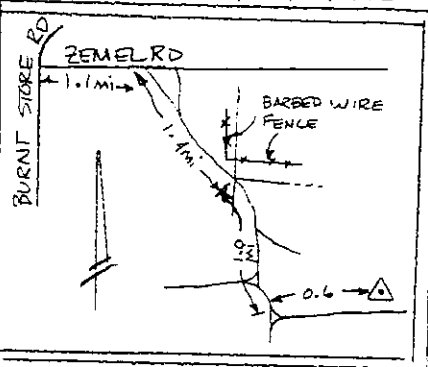
NORTHING (Y) _____
 EASTING (X) _____

GRID FLORIDA TRANSVERSE MERCATOR RECOVERED BY _____
 ZONE WEST SCALE FACTOR .999941 DATE, CONDITION _____

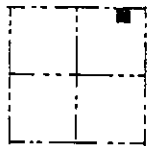
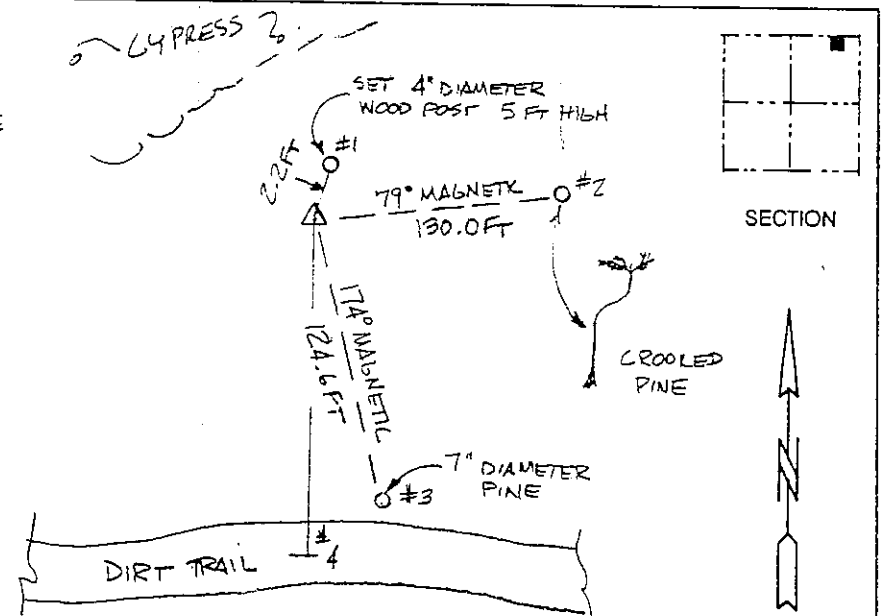
FIELD BOOK _____ PAGE _____

RECOVERY TIES

- NO. 1 2.2 FT TO WOOD POST
- NO. 2 130.0 FT TO CROOKED PINE
- NO. 3 124.6 FT TO 7" PINE



No. 4 130 FT TO CENTERLINE OF DIRT TRAIL



SECTION

PHOTO NO. _____
 SKETCH BY MDH

VERTICAL CONTROL ORIGINATED ON 2nd ORDER CONTROL ESTABLISHED BY _____ N. G. S. AND F. D. O. T.

ON NATIONAL GEODETIC VERTICAL DATUM OF 1929.

ELEVATION (FT) _____, 3rd ORDER LEVEL BOOK _____ PAGE _____