

LEE COUNTY SURVEY MARK DESCRIPTION



SURVEY CONTROL BY:
DENI ASSOCIATES, INC.
FORT MYERS, FLORIDA

MAPPING BY:
WOOLPERT CONSULTANTS

DESIGNATION 3-24-43-22 ^(GPS) (9080) COUNTY LEE STATE FL

LOCATED IN SEC 24 TWP 43S RGE 22E USGS QUAD MAP MATLACHA

TO REACH SURVEY MARK FROM PINE ISLAND ROAD & BURNT STORE ROAD; GO NORTHERLY ALONG BURNT STORE ROAD FOR 3.0 MILES TO GULF STREAM PKWY; THENCE WESTERLY ALONG GULF STREAM PKWY FOR 1.0 TO OLD BURNT STORE ROAD; THENCE NORTHERLY 3.0 MILES TO CALOOSA PKWY; THENCE WESTERLY 0.75 MILES TO THE END AND NW 47 AVE AND THE MARK.

TYPE OF 3" ALUM LEE Co. DISK 1 1/2 CONC.

MARK _____ DATE SET _____ 1991

HORIZONTAL CONTROL ORIGINATED ON 1st ORDER HORIZONTAL CONTROL ORIGINATED ON _____ ORDER

CONTROL BASED ON FLORIDA HIGH PRECISION GPS NETWORK, CONTROL BY _____

ON NORTH AMERICAN DATUM OF 1983, 1990 ADJUSTMENT ON _____ DATUM

COORDINATES (FT), 1st ORDER COORDINATES (FT), _____ ORDER

NORTHING (Y) 869,581,473 NORTHING (Y) _____

EASTING (X) 633,762,184 EASTING (X) _____

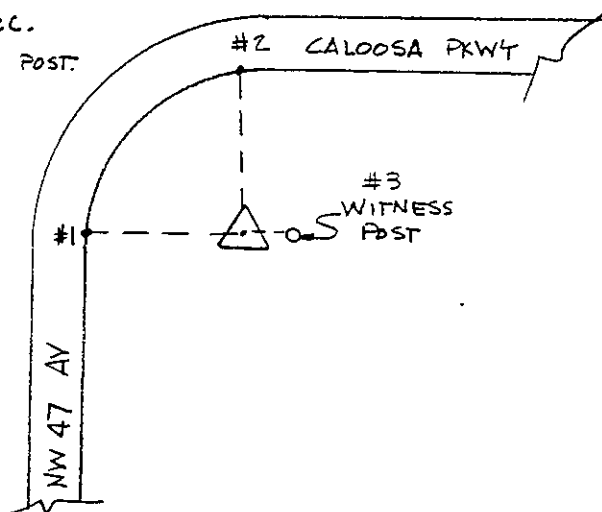
GRID FLORIDA TRANSVERSE MERCATOR RECOVERED BY _____

ZONE WEST SCALE FACTOR .999942 DATE, CONDITION _____

FIELD BOOK _____ PAGE _____

RECOVERY TIES

- NO. 1 36.3' TO EDGE OF PAVEMENT @ P.C. CURVE.
- NO. 2 39.5' TO EOP @ P.C.
- NO. 3 1.5' TO WITNESS POST.



SECTION



PHOTO

NO. _____

SKETCH

BY MDH

VERTICAL CONTROL ORIGINATED ON 2nd ORDER CONTROL ESTABLISHED BY _____ N. G. S. AND F. D. O. T.

ON NATIONAL GEODETIC VERTICAL DATUM OF 1929.

ELEVATION (FT) _____, 3rd ORDER LEVEL BOOK _____ PAGE _____