

# LEE COUNTY SURVEY MARK DESCRIPTION

DESIGNATION 46-27-05-01 COUNTY LEE STATE FL.

LOCATED IN SEC 05 TWP 46S RGE 27E USGS QUAD MAP Alva S.W.

**TO REACH SURVEY MARK:**

From the intersection of S.R. 82 and Green Meadows Road; thence southerly along Green Meadows Road 3.7 miles to a dirt track; thence easterly along said dirt track 2.0 miles to a concrete post marking the northwest corner of Section 5, Township 46 South, Range 27 East; thence southwesterly to a needlegrass area and the mark. Said mark is 10' northerly of a witness sign.

TYPE OF 4"x4" Concrete Monument With Brass Disk

MARK GPS 46-27-05-01 DATE SET March 27, 19 90

HORIZONTAL CONTROL ORIGINATED ON 2<sup>nd</sup>/1<sup>st</sup> ORDER CONTROL BY USC & GS/NGS

ON 1927 DATUM. ON 1983 (1990 GPS Adjustment) DATUM.

COORDINATES (FT), 2<sup>nd</sup> ORDER COORDINATES (FT), 2<sup>nd</sup> ORDER

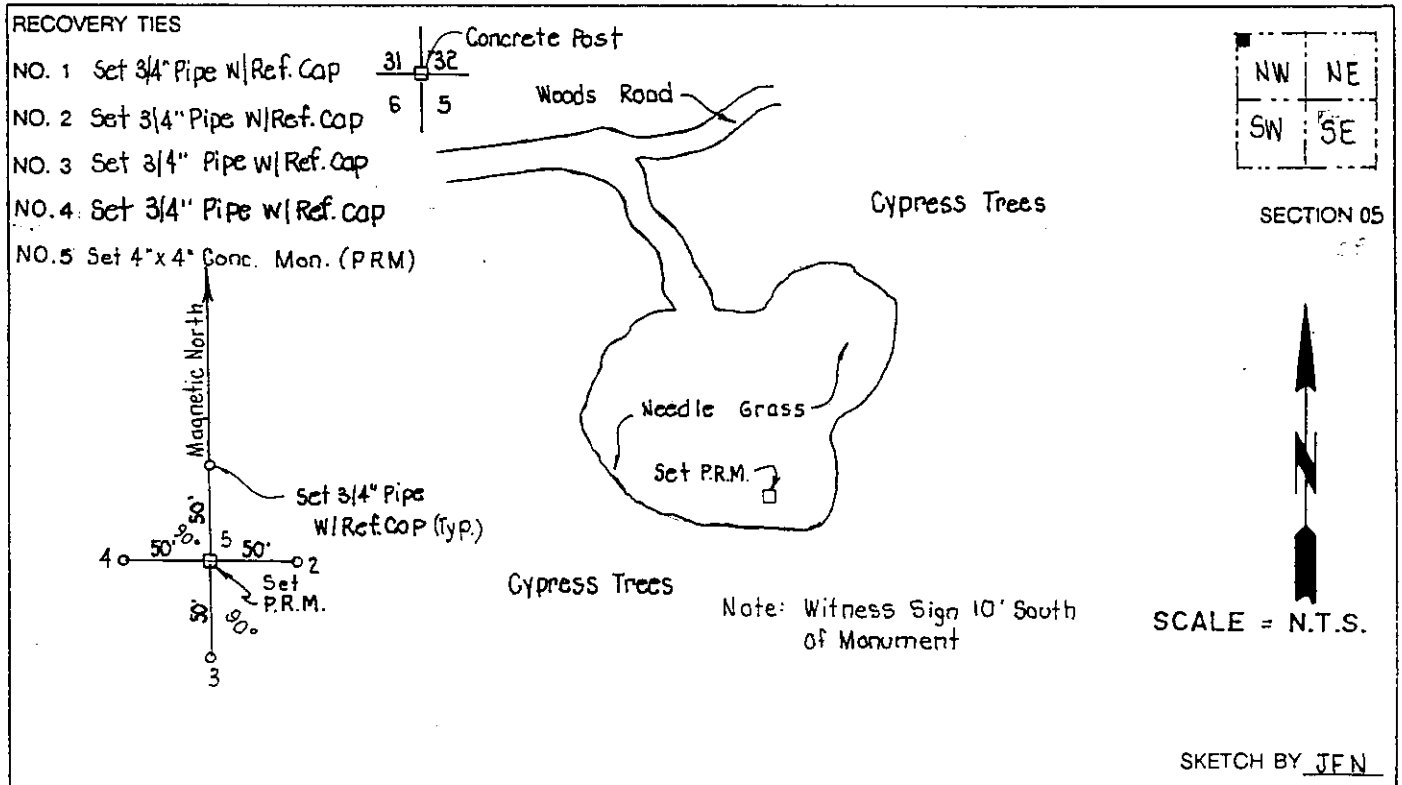
NORTHING (Y) 790935.455 NORTHING (Y) 791105.292

EASTING (X) 616187.940 EASTING (X) 772419.202

GRID FLORIDA TRANSVERSE MERCATOR RECOVERED BY \_\_\_\_\_

ZONE WEST DATE, CONDITION \_\_\_\_\_

FIELD BOOK 1738 PAGE 59



## JOHNSON ENGINEERING, INC.

CIVIL ENGINEERS - LAND SURVEYORS  
2158 JOHNSON STREET, POST OFFICE BOX 1550, FORT MYERS, FLORIDA, 33902-1550  
PHONE (813) 334-0046