

# LEE COUNTY SURVEY MARK DESCRIPTION

DESIGNATION 46-26-22-01 COUNTY LEE STATE FL.

LOCATED IN SEC 22 TWP 46S. RGE 26 E. USGS QUAD MAP Corkscrew, N.W.

**TO REACH SURVEY MARK:**

From the intersection of Corkscrew Rd. and Alico Rd. travel northerly along Alico Rd. 0.6 mile to the entrance road heading easterly to Corkscrew Water Treatment Plant and mark. Station is 22.5' north of the entrance road, 70.4' east of Alico Rd. and 10' west of the Alico Rd east R/W fence.

TYPE OF 4" X 4" Concrete Monument With Brass Disk.

MARK GPS 46-26-22-01 DATE SET March 13, 19 90

HORIZONTAL CONTROL ORIGINATED ON 2<sup>nd</sup>/1<sup>st</sup> ORDER CONTROL BY USC & GS/ NGS

ON 1927 DATUM. ON 1983 (1990 GPS Adjustment) DATUM.

COORDINATES (FT), 2<sup>nd</sup> ORDER COORDINATES (FT), 2<sup>nd</sup> ORDER

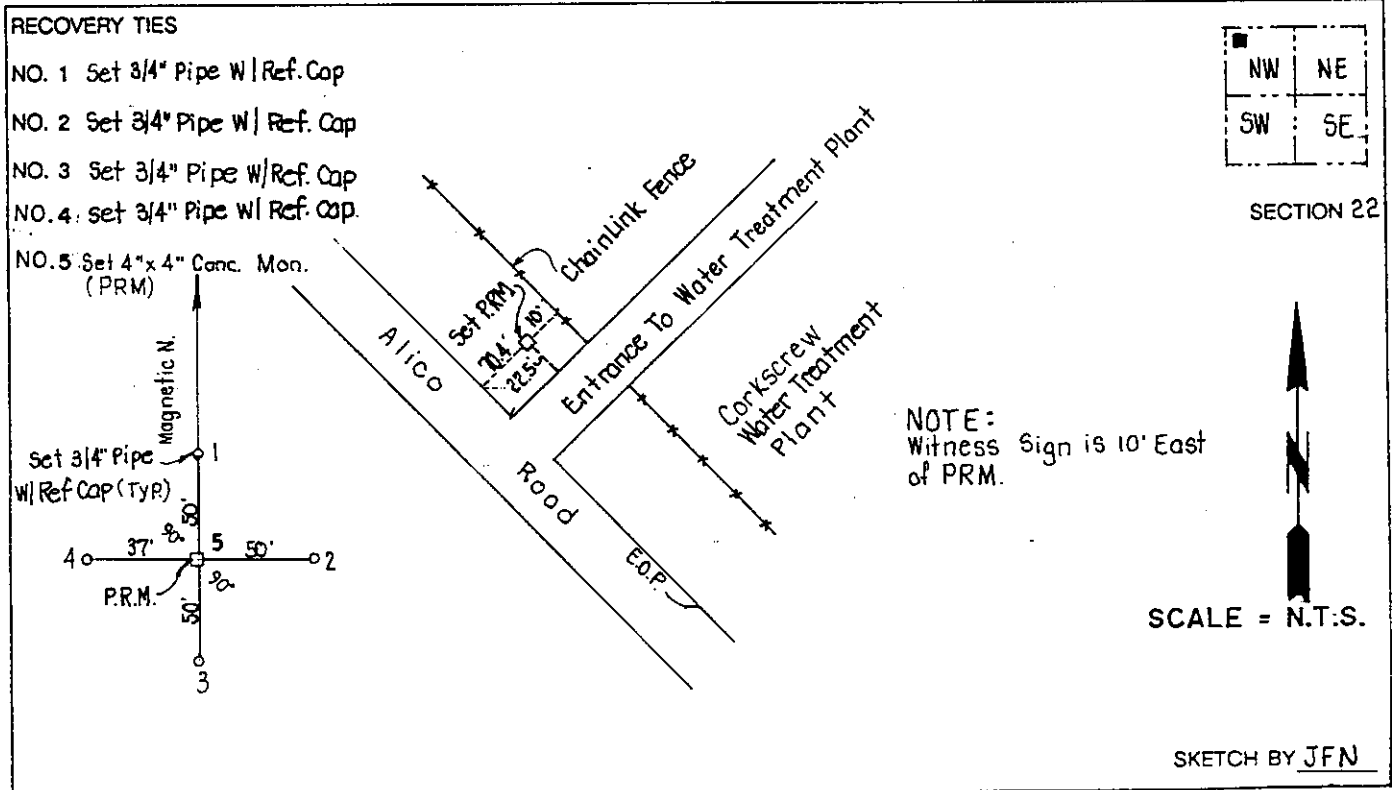
NORTHING (Y) 7739 10.169 NORTHING (Y) 774079.942

EASTING (X) 596458.610 EASTING (X) 752689.779

GRID FLORIDA TRANSVERSE MERCATOR RECOVERED BY \_\_\_\_\_

ZONE WEST DATE, CONDITION \_\_\_\_\_

FIELD BOOK 1738 PAGE 21



## JOHNSON ENGINEERING, INC.

CIVIL ENGINEERS - LAND SURVEYORS  
2158 JOHNSON STREET, POST OFFICE BOX 1550, FORT MYERS, FLORIDA, 33902-1550  
PHONE (813) 334-0046

# LEE COUNTY SURVEY MARK DESCRIPTION



SURVEY CONTROL BY:  
DENI ASSOCIATES, INC.  
FORT MYERS, FLORIDA

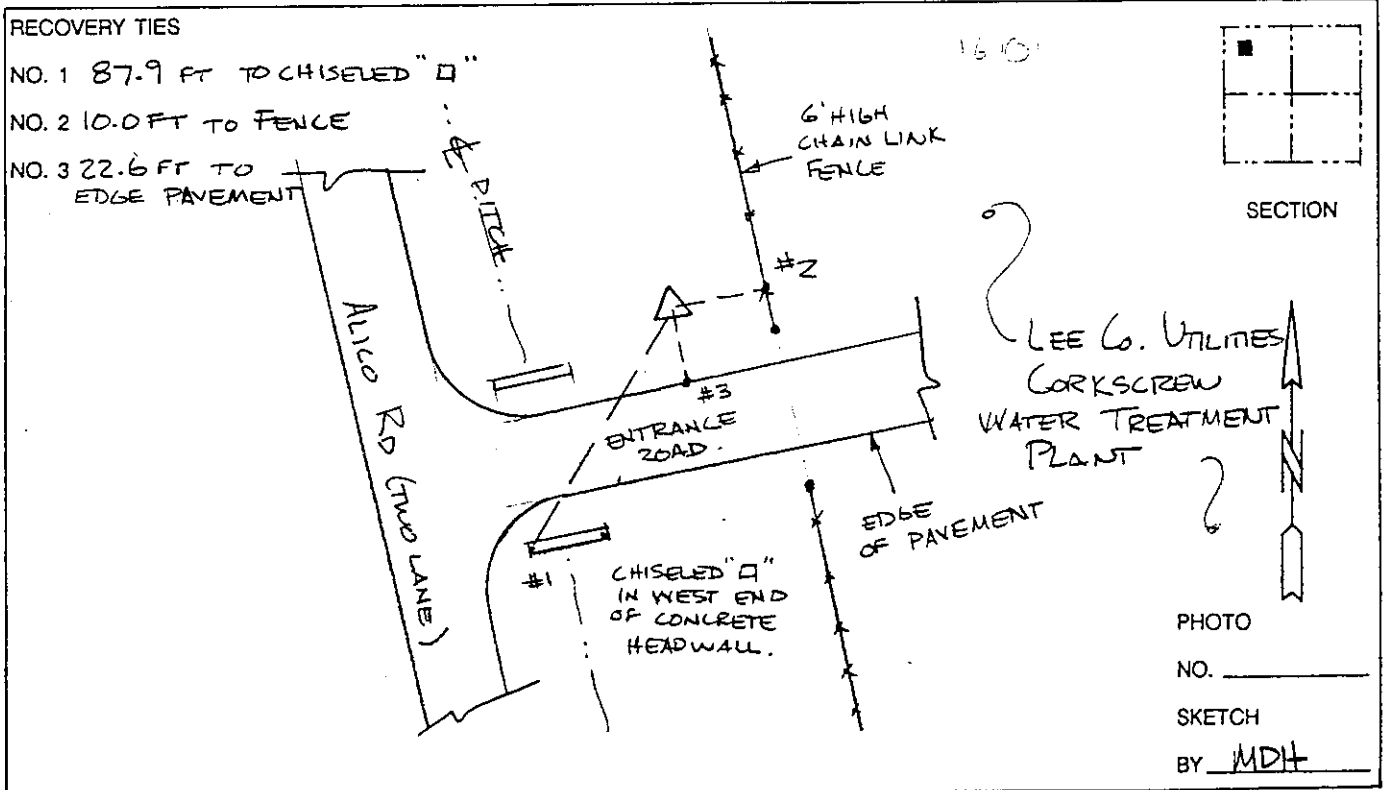
MAPPING BY:  
WOOLPERT CONSULTANTS

DESIGNATION JEI 46-26-22-01 (9079)<sup>GPS</sup> COUNTY LEE STATE FL  
 LOCATED IN SEC 22 TWP 46S RGE 26E USGS QUAD MAP CORKSCREW NW  
 TO REACH SURVEY MARK FROM THE INTERSECTION OF ALICO RD & CORKSCREW  
RD ; GO NORTH 0.7 mi ± ON ALICO RD.

TYPE OF 4" X 4" CONC MONUMENT ; JOHNSON ENGINEERING INC.  
 MARK LB 642 DATE SET 1990

HORIZONTAL CONTROL ORIGINATED ON 1st ORDER HORIZONTAL CONTROL ORIGINATED ON \_\_\_\_\_ ORDER  
 CONTROL BASED ON FLORIDA HIGH PRECISION GPS NETWORK, CONTROL BY \_\_\_\_\_  
 ON NORTH AMERICAN DATUM OF 1983, 1990 ADJUSTMENT ON \_\_\_\_\_ DATUM  
 COORDINATES (FT), 1st ORDER COORDINATES (FT), \_\_\_\_\_ ORDER  
 NORTHING (Y) 774,079,883 NORTHING (Y) \_\_\_\_\_  
 EASTING (X) 752,689,774 EASTING (X) \_\_\_\_\_

GRID FLORIDA TRANSVERSE MERCATOR RECOVERED BY DENI ASSOCIATES  
 ZONE WEST SCALE FACTOR .999952 DATE, CONDITION 2-91  
 FIELD BOOK \_\_\_\_\_ PAGE \_\_\_\_\_ GOOD



VERTICAL CONTROL ORIGINATED ON 2nd ORDER CONTROL ESTABLISHED BY N. G. S. AND F. D. O. T.  
 ON NATIONAL GEODETIC VERTICAL DATUM OF 1929.  
 ELEVATION (FT) \_\_\_\_\_ 3rd ORDER LEVEL BOOK \_\_\_\_\_ PAGE \_\_\_\_\_