

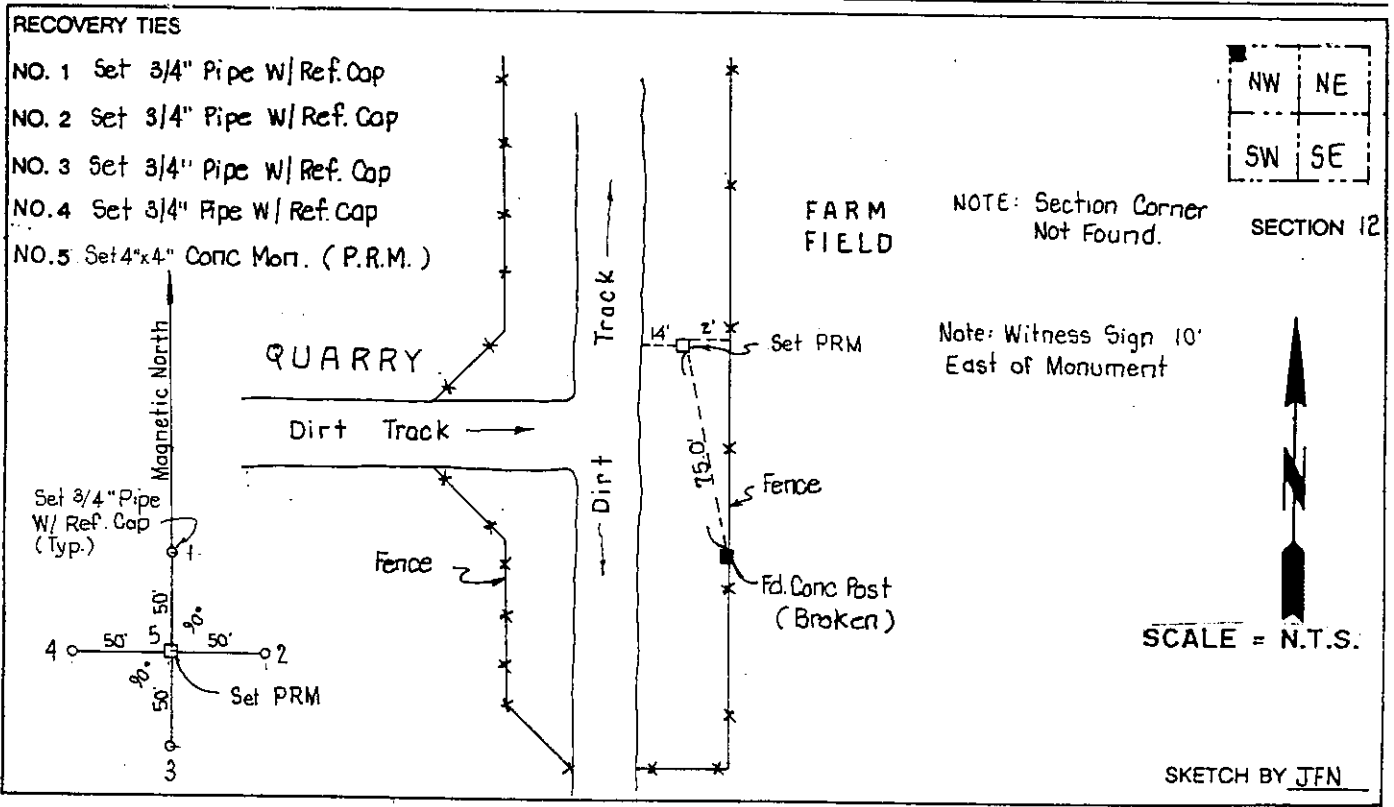
# LEE COUNTY SURVEY MARK DESCRIPTION

DESIGNATION 46-26-12-01 COUNTY LEE STATE FL.  
 LOCATED IN SEC 12 TWP 46S. RGE 26 E. USGS QUAD MAP Cork Screw, N.W.

**TO REACH SURVEY MARK:**

From the intersection of Alico Road and a road leading to Harper Brothers, Alico Road Quarry travel easterly along the Quarry road for 2.70 miles to the intersection of a north-south dirt track and the mark. The station is 10 feet west of a witness sign.

TYPE OF 4"x4" Concrete Monument With Brass Disk  
 MARK GPS 462612-01 DATE SET March 13, 1990  
 HORIZONTAL CONTROL ORIGINATED ON 2<sup>nd</sup>/1<sup>st</sup> ORDER CONTROL BY USC & GS / NGS  
 ON 1927 DATUM. ON 1983 (1990 GPS Adjustment) DATUM.  
 COORDINATES (FT), 2<sup>nd</sup> ORDER COORDINATES (FT), 2<sup>nd</sup> ORDER  
 NORTHING (Y) 785176.146 NORTHING (Y) 785345.955  
 EASTING (X) 605681.462 EASTING (X) 761912.697  
 GRID FLORIDA TRANSVERSE MERCATOR RECOVERED BY \_\_\_\_\_  
 ZONE WEST DATE, CONDITION \_\_\_\_\_  
 FIELD BOOK 1738 PAGE 20



**JOHNSON ENGINEERING, INC.**  
 CIVIL ENGINEERS - LAND SURVEYORS  
 2158 JOHNSON STREET, POST OFFICE BOX 1550, FORT MYERS, FLORIDA, 33902-1550  
 PHONE (813) 334-0046