

LEE COUNTY SURVEY MARK DESCRIPTION

DESIGNATION 46-26-08-02 COUNTY LEE STATE FL.

LOCATED IN SEC 08 TWP 46S. RGE 26 E. USGS QUAD MAP Cork Screw, N.W.

TO REACH SURVEY MARK:

From the intersection of I-75 and Alico Road; thence easterly along Alico Road 3.8 miles to the mark. Said mark is on the south side of Alico Road. It is 33.1' southerly of the south edge of pavement of Alico Road, 2.0' northerly of a witness sign, at a shell drive to the north.

TYPE OF 4" X 4" Concrete Monument With Brass Disk

MARK GPS 46260802 DATE SET March, 27, 19 90

HORIZONTAL CONTROL ORIGINATED ON 2nd/1st ORDER CONTROL BY USC & GS / NGS

ON 1927 DATUM. ON 1983 (1990 GPS Adjustment) DATUM.

COORDINATES (FT), 2nd ORDER COORDINATES (FT), 2nd ORDER

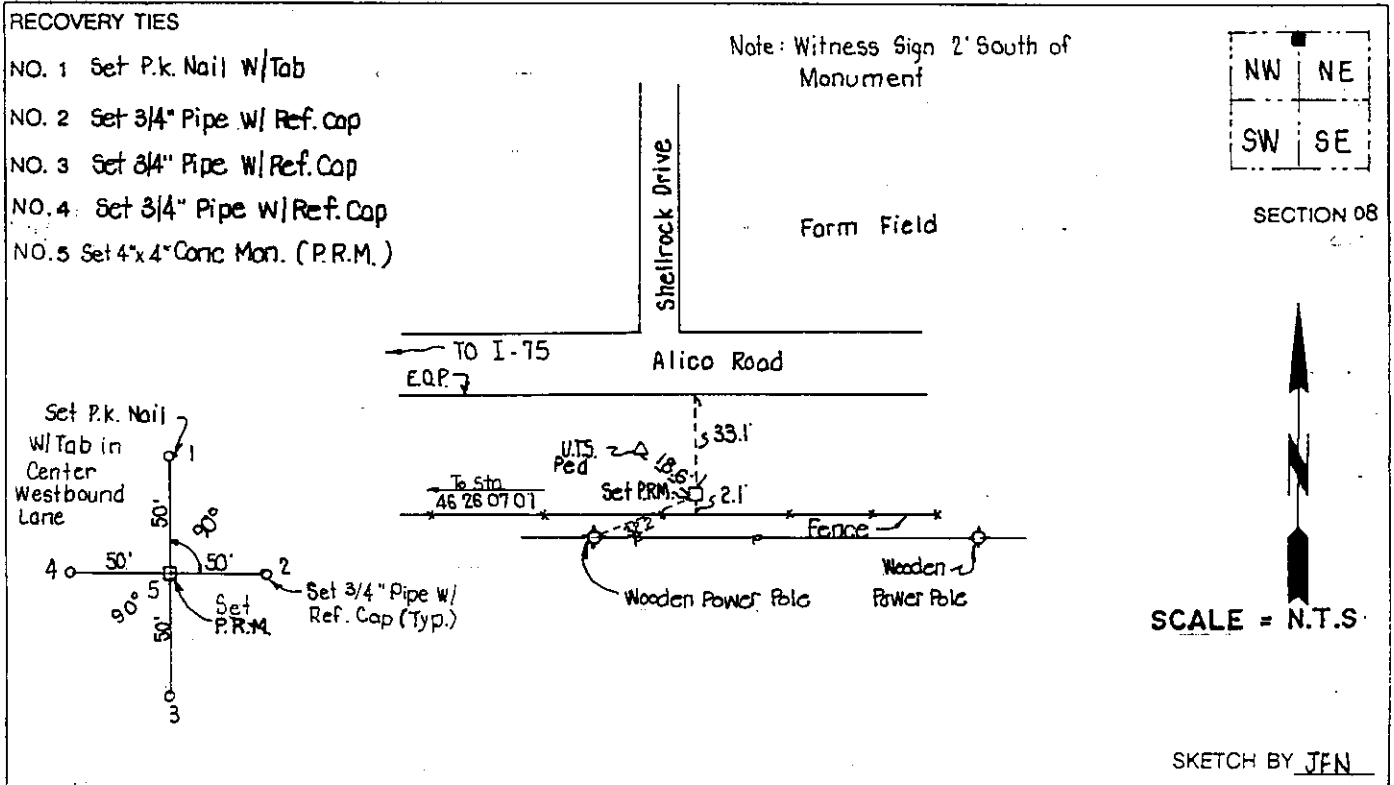
NORTHING (Y) 784887.495 NORTHING (Y) 785057.290

EASTING (X) 587483.101 EASTING (X) 743714.249

GRID FLORIDA TRANSVERSE MERCATOR RECOVERED BY _____

ZONE WEST DATE, CONDITION _____

FIELD BOOK 1738 PAGE 58



JOHNSON ENGINEERING, INC.

CIVIL ENGINEERS - LAND SURVEYORS

2158 JOHNSON STREET, POST OFFICE BOX 1550, FORT MYERS, FLORIDA, 33902-1550

PHONE (813) 334-0046