

LEE COUNTY SURVEY MARK DESCRIPTION

DESIGNATION 46-25-20 COUNTY LEE STATE FL.

LOCATED IN SEC 20 TWP 46S. RGE 25 E. USGS QUAD MAP Estero

TO REACH SURVEY MARK:

Station is at the intersection of U.S. 41 (S.R. 45) and Sanibel Blvd. Mark is opposite a Circle K food store, underneath an overhead powerline running along the southwesterly R/W U.S. 41, 46' southwest of the edge of pavement U.S. 41, 7' southeast of a power pole and witness sign.

TYPE OF 4" X 4" Concrete Monument With Brass Disk

MARK 46-25-20 DATE SET May 4, 1990

HORIZONTAL CONTROL ORIGINATED ON 2nd/1st ORDER CONTROL BY USC & GS / NGS

ON 1927 DATUM. ON 1983 (1990 GPS Adjustment) DATUM.

COORDINATES (FT), 2nd ORDER

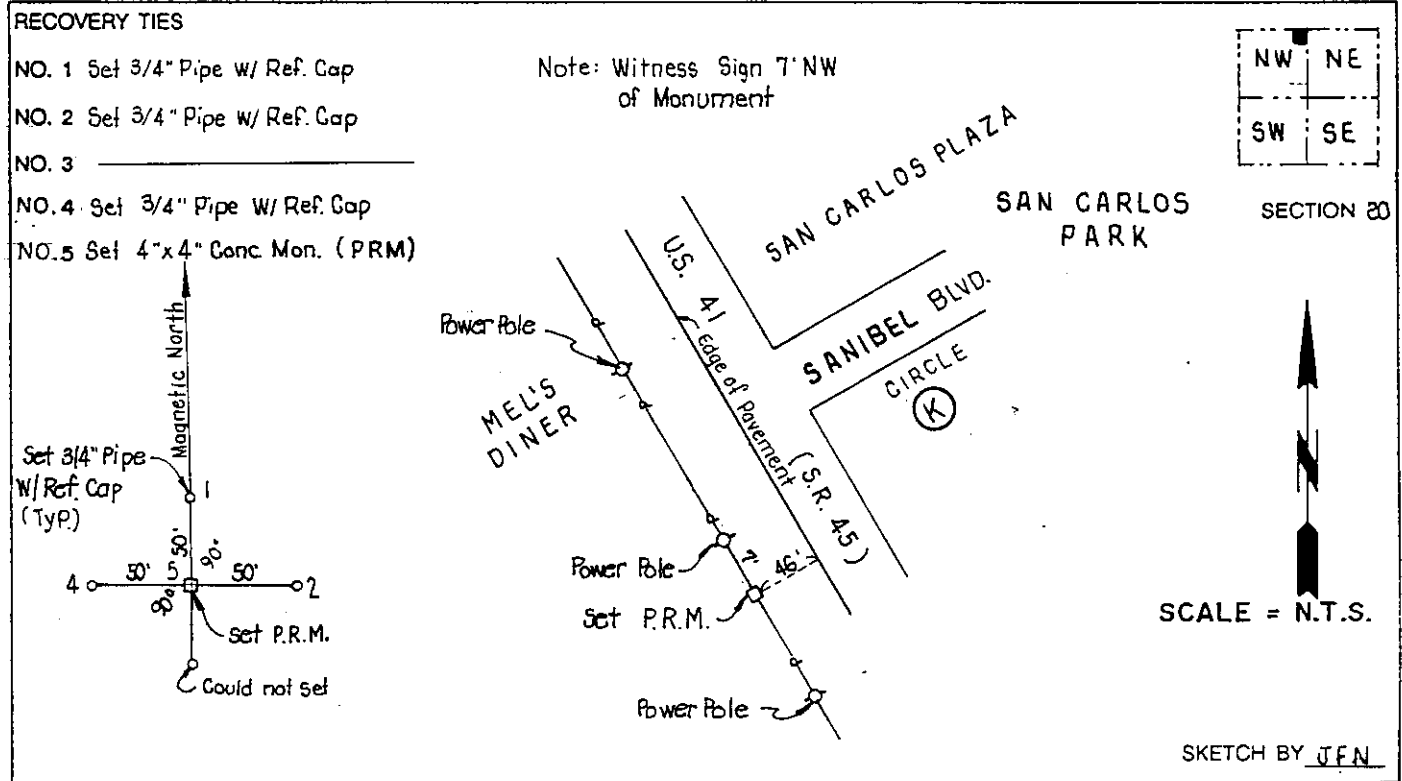
NORTHING (Y) 773731.172 NORTHING (Y) 773900.607

EASTING (X) 555 483.798 EASTING (X) 711715.429

GRID FLORIDA TRANSVERSE MERCATOR RECOVERED BY _____

ZONE WEST DATE, CONDITION _____

FIELD BOOK 1738 PAGE 75



JOHNSON ENGINEERING, INC.

- CIVIL ENGINEERS - LAND SURVEYORS
2158 JOHNSON STREET, POST OFFICE BOX 1550, FORT MYERS, FLORIDA, 33902-1550
PHONE (813) 334-0046