

LEE COUNTY SURVEY MARK DESCRIPTION

DESIGNATION 45-26-24-02 COUNTY LEE STATE FL.
 LOCATED IN SEC 24 TWP 45S. RGE 26E. USGS QUAD MAP Alva, S.W.

TO REACH SURVEY MARK:

From the intersection of S.R. 82 and Green Meadows Rd. travel south along Green Meadows Rd. for 1.0 mile to the junction with Willow Brook Rd. Then travel east along Willow Brook Rd. for 0.45 mile to the station. Mark is 35.6' south of the C/L Willow Brook Rd., 5.1' northwest of a power pole and 5' north of a fence and witness sign.

TYPE OF 4"X4" Concrete Monument With Brass Disk

MARK GSP45-26-24-02 DATE SET March 28, 1990

HORIZONTAL CONTROL ORIGINATED ON 2nd/1st ORDER CONTROL BY USC & GS / NGS

ON 1927 DATUM. ON 1983 (1990 GPS Adjustment) DATUM.

COORDINATES (FT), 2nd ORDER COORDINATES (FT), 2nd ORDER

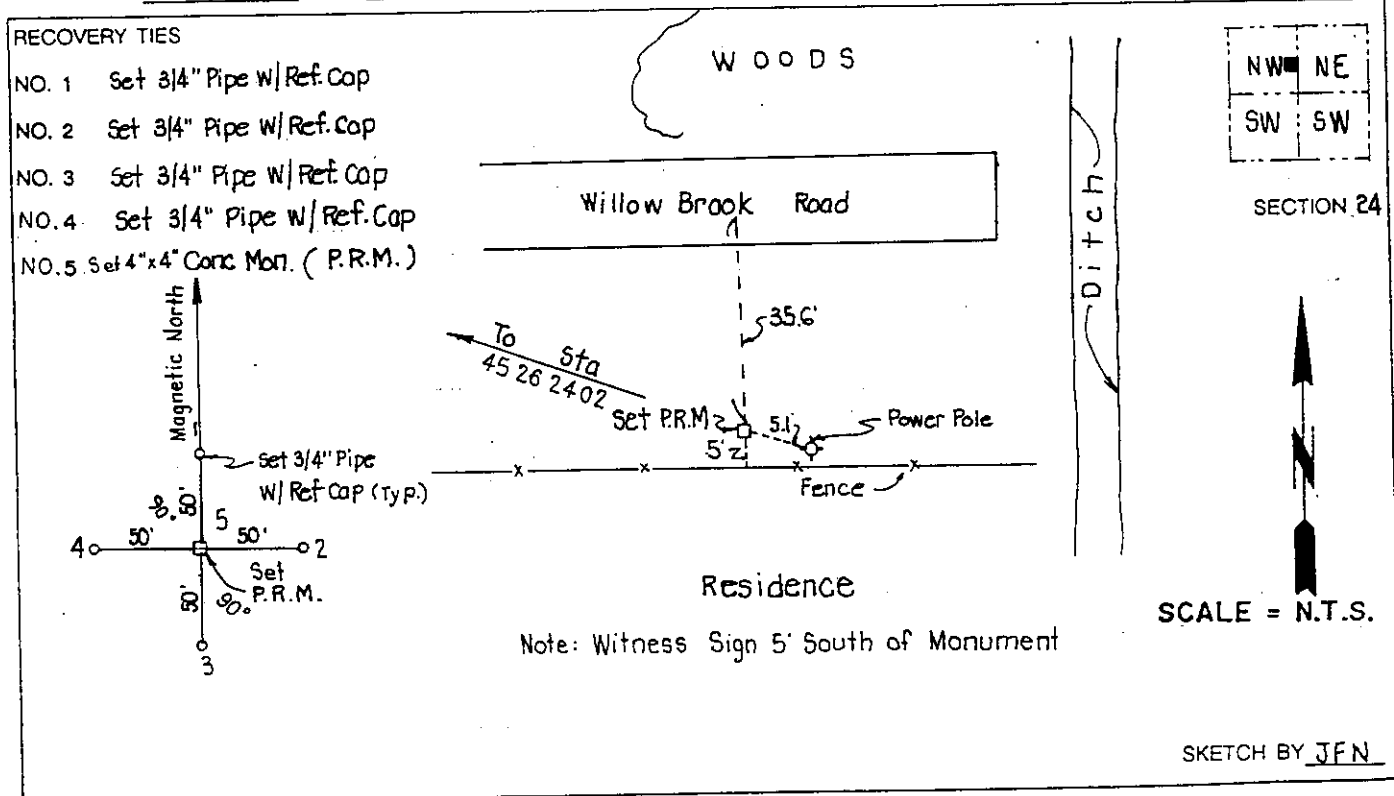
NORTHING (Y) 805494.822 NORTHING (Y) 805664.650

EASTING (X) 607937.393 EASTING (X) 764168.573

GRID FLORIDA TRANSVERSE MERCATOR RECOVERED BY _____

ZONE WEST DATE, CONDITION _____

FIELD BOOK 1738 PAGE 61



JOHNSON ENGINEERING, INC.

CIVIL ENGINEERS - LAND SURVEYORS
 2158 JOHNSON STREET, POST OFFICE BOX 1550, FORT MYERS, FLORIDA, 33902-1550
 PHONE (813) 334-0046