

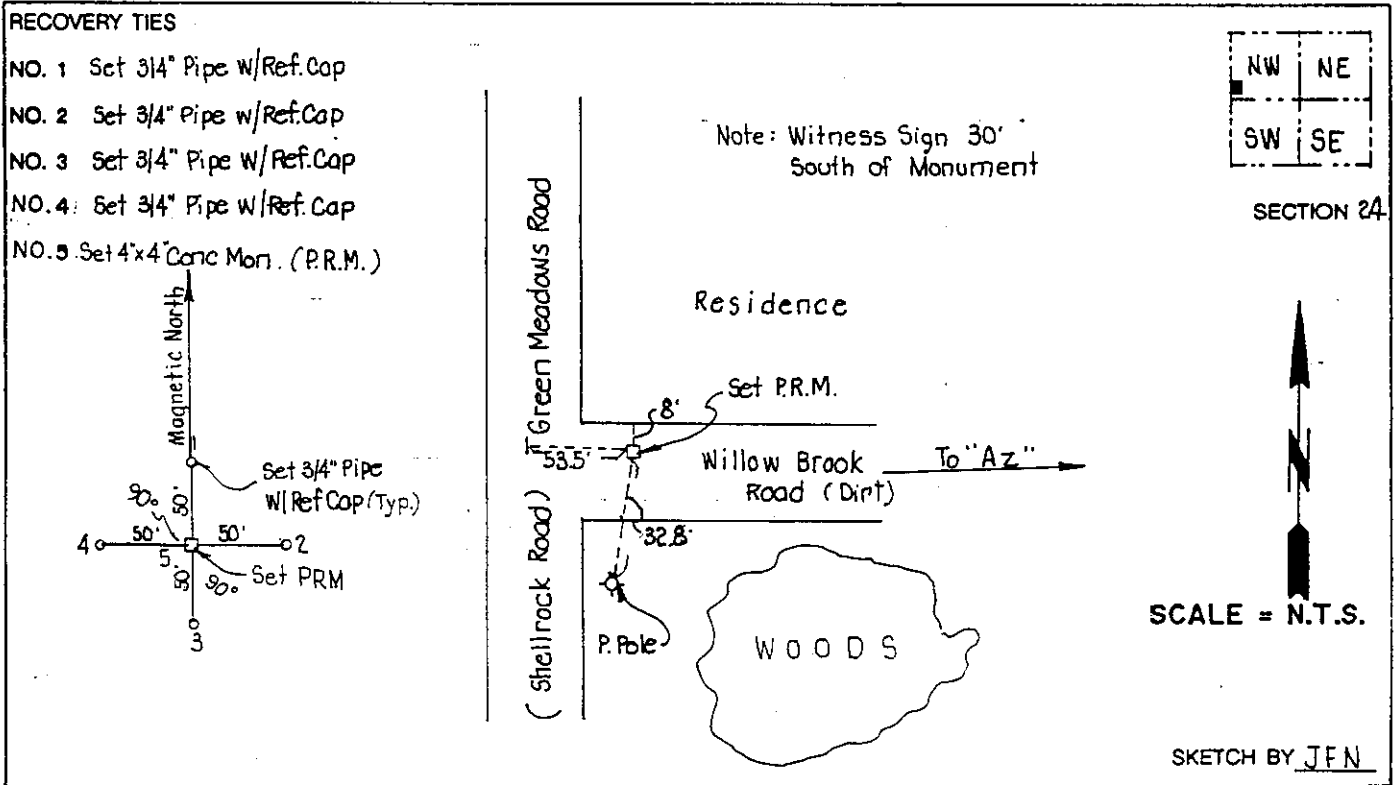
# LEE COUNTY SURVEY MARK DESCRIPTION

DESIGNATION 45-26-24-01 COUNTY LEE STATE FL.  
 LOCATED IN SEC 24 TWP 45S. RGE 26 E. USGS QUAD MAP Alva, SW.

**TO REACH SURVEY MARK:**

From the intersection of S.R. 82 and Green Meadows Rd. travel south along Green Meadows Rd for 1.0 mile to the junction with Willow Brook Rd. Mark is 53.5 feet east of the C/L Green Meadows Rd., 32.8' northeast of a power pole and 30' north of a witness sign.

TYPE OF 4" X 4" Concrete Monument With Brass Disk  
 MARK GPS 45-26-24-01 DATE SET March 28, 1990  
 HORIZONTAL CONTROL ORIGINATED ON 2<sup>nd</sup>/1<sup>st</sup> ORDER CONTROL BY USC & GS / NGS  
 ON 1927 DATUM. ON 1983 (1990 GPS Adjustment) DATUM.  
 COORDINATES (FT), 2<sup>nd</sup> ORDER COORDINATES (FT), 2<sup>nd</sup> ORDER  
 NORTHING (Y) 805508.715 NORTHING (Y) 805678.540  
 EASTING (X) 605470.506 EASTING (X) 761701.673  
 GRID FLORIDA TRANSVERSE MERCATOR RECOVERED BY \_\_\_\_\_  
 ZONE WEST DATE, CONDITION \_\_\_\_\_  
 FIELD BOOK 1738 PAGE 60



**JOHNSON ENGINEERING, INC.**  
 CIVIL ENGINEERS - LAND SURVEYORS  
 2158 JOHNSON STREET, POST OFFICE BOX 1550, FORT MYERS, FLORIDA, 33902-1550  
 PHONE (813) 334-0046