

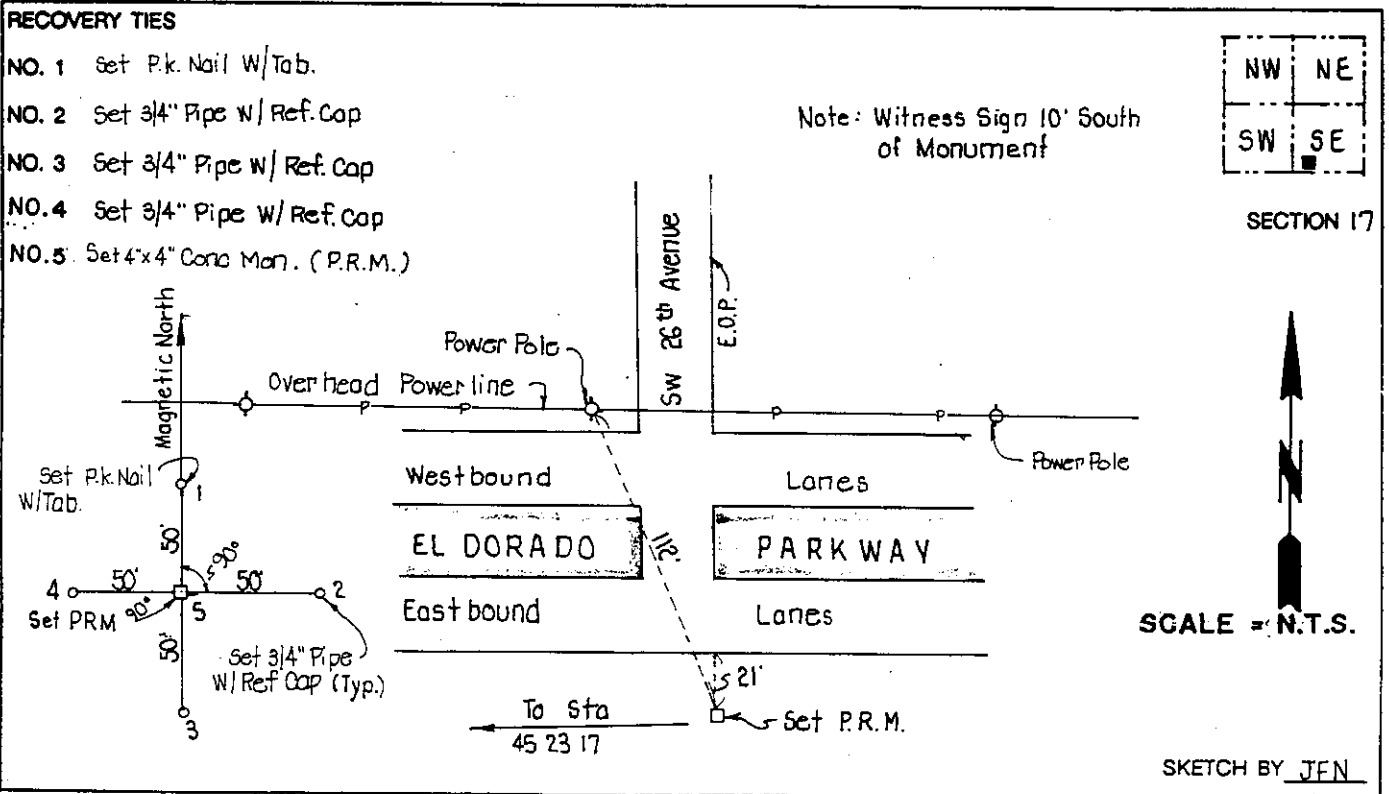
LEE COUNTY SURVEY MARK DESCRIPTION

DESIGNATION 45-23-17-02 COUNTY LEE STATE FL.
 LOCATED IN SEC 17 TWP 45S. RGE 23E. USGS QUAD MAP Pine Island Center

TO REACH SURVEY MARK:

From the intersection of Chiquita Boulevard and Eldorado Parkway; thence westerly along Eldorado Parkway 1.37 miles to the junction of S.W. 26th Avenue and the mark. The station is 10' north of a witness sign.

TYPE OF 4"x4" Concrete Monument With Brass Disk
 MARK GPS 45-23-17-02 DATE SET March, 23 19 90
 HORIZONTAL CONTROL ORIGINATED ON 2nd/1st ORDER CONTROL BY USC & GS / NGS
 ON 1927 DATUM. ON 1983 (1990 GPS Adjustment) DATUM.
 COORDINATES (FT), 2nd ORDER COORDINATES (FT), 2nd ORDER
 NORTHING (Y) 805093.576 NORTHING (Y) 805263.446
 EASTING (X) 490963.160 EASTING (X) 641193.791
 GRID FLORIDA TRANSVERSE MERCATOR RECOVERED BY _____
 ZONE WEST DATE, CONDITION _____
 FIELD BOOK 1738 PAGE 52



JOHNSON ENGINEERING, INC.
 CIVIL ENGINEERS - LAND SURVEYORS
 2158 JOHNSON STREET, POST OFFICE BOX 1550, FORT MYERS, FLORIDA, 33902-1550
 PHONE 1813/334-0046