

LEE COUNTY SURVEY MARK DESCRIPTION

DESIGNATION 45-23-15-01 COUNTY LEE STATE FL

LOCATED IN SEC 15 TWP 45S RGE 23E USGS QUAD MAP Fort Myers, SW

TO REACH SURVEY MARK:

The mark is in the centerline median at the intersection of Skyline Boulevard and Eldorado Parkway. Station is 10' north of a witness sign.

TYPE OF 4" X 4" Concrete Monument With Brass Disk

MARK GPS 45-23-15-01 DATE SET March 23, 19 90

HORIZONTAL CONTROL ORIGINATED ON 2nd/1st ORDER CONTROL BY USC & GS / NGS

ON 1927 DATUM. ON 1983 (1990 GPS Adjustment) DATUM.

COORDINATES (FT), 2nd ORDER

NORTHING (Y) 805211.335

EASTING (X) 503048.155

COORDINATES (FT), 2nd ORDER

NORTHING (Y) 805381.200

EASTING (X) 659278.850

GRID FLORIDA TRANSVERSE MERCATOR

RECOVERED BY _____

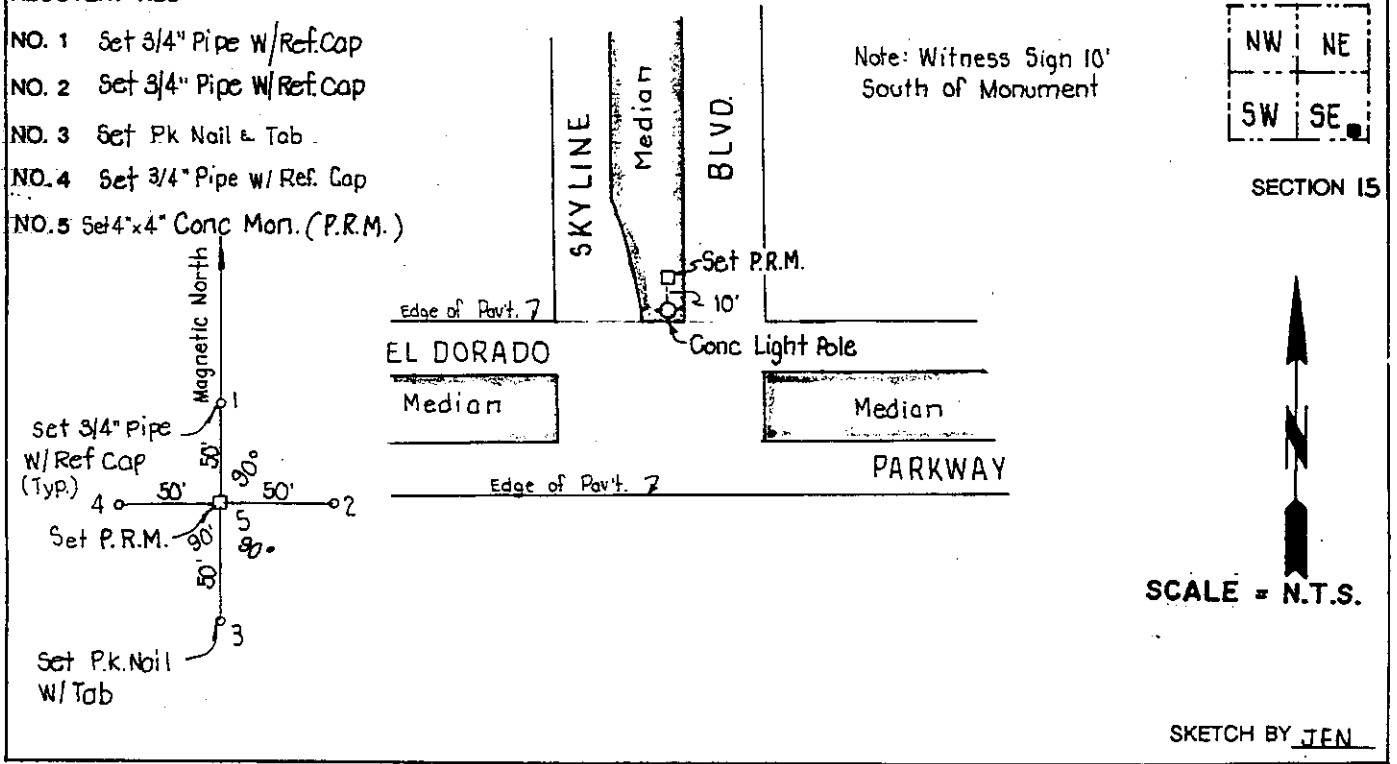
ZONE WEST

DATE, CONDITION _____

FIELD BOOK 1738 PAGE 53

RECOVERY TIES

- NO. 1 Set 3/4" Pipe w/Ref. Cap
- NO. 2 Set 3/4" Pipe w/Ref. Cap
- NO. 3 Set Pk Nail & Tab
- NO. 4 Set 3/4" Pipe w/Ref. Cap
- NO. 5 Set 4"x4" Conc Mon. (P.R.M.)



JOHNSON ENGINEERING, INC.

CIVIL ENGINEERS - LAND SURVEYORS

2158 JOHNSON STREET, POST OFFICE BOX 1550, FORT MYERS, FLORIDA, 33902-1550
PHONE (813) 334-0046