

LEE COUNTY SURVEY MARK DESCRIPTION

DESIGNATION 44-27-19-02 COUNTY LEE STATE FL

LOCATED IN SEC 19 TWP 44S. RGE 27E. USGS QUAD MAP 01gg

TO REACH SURVEY MARK:

From the intersection of S.R. 884 (Lee Boulevard) and Sunshine Boulevard go northerly along Sunshine Boulevard for 2.9 miles to West 12th Street; thence easterly along West 12th Street for 0.5 miles to the mark. Station is 17.6 feet southerly of the south edge of pavement of 12th Street. It is 162 feet westerly of Oak Avenue. It is 10 feet north of a witness sign.

TYPE OF 4"x4" Concrete Monument With Brass Disk

MARK GPS 44-27-19-02 DATE SET March 15, 1990

HORIZONTAL CONTROL ORIGINATED ON 2nd/1st ORDER CONTROL BY USC & GS / NGS

ON 1927 DATUM. ON 1983 (1990 GPS Adjustment) DATUM.

COORDINATES (FT), 2nd ORDER COORDINATES (FT), 2nd ORDER

NORTHING (Y) 839265.754 NORTHING (Y) 839435.381

EASTING (X) 611935.811 EASTING (X) 768167.011

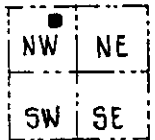
GRID FLORIDA TRANSVERSE MERCATOR RECOVERED BY _____

ZONE WEST DATE, CONDITION _____

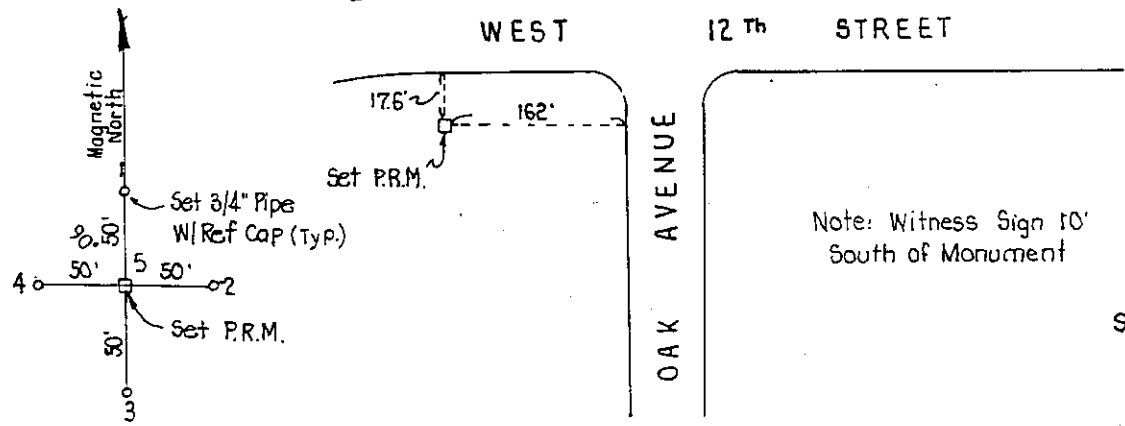
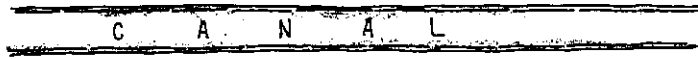
FIELD BOOK 1738 PAGE 28

RECOVERY TIES

- NO. 1 Set 3/4" Pipe W/Ref.Cap
- NO. 2 Set 3/4" Pipe W/Ref.Cap
- NO. 3 Set 3/4" Pipe W/Ref.Cap
- NO. 4 Set 3/4" Pipe W/Ref.Cap
- NO. 5 Set 4"x4" Conc Mon. (P.R.M.)



SECTION 19



SKETCH BY JEN

JOHNSON ENGINEERING, INC.

CIVIL ENGINEERS - LAND SURVEYORS

2158 JOHNSON STREET, POST OFFICE BOX 1550, FORT MYERS, FLORIDA, 33902-1550

PHONE (813) 334-0046