

LEE COUNTY SURVEY MARK DESCRIPTION

DESIGNATION 44-27-19-01 COUNTY LEE STATE FL.
 LOCATED IN SEC 19 TWP 44S. RGE 27 E. USGS QUAD MAP Olga

TO REACH SURVEY MARK:

From the intersection of S.R. 884 (Lee Boulevard) and Sunshine Boulevard, travel northerly for 2.9 miles along Sunshine Boulevard to West 12th Street, then travel easterly for one mile to the intersection of West 12th Street and Williams Avenue. The station is 10 feet south of a witness sign.

TYPE OF 4" X 4" Concrete Monument With Brass Disk

MARK GPS44-27-19-01 DATE SET March 12, 1990

HORIZONTAL CONTROL ORIGINATED ON 2nd/1st ORDER CONTROL BY USC & GS / NGS

ON 1927 DATUM. ON 1983 (1990 GPS Adjustment) DATUM.

COORDINATES (FT), 2nd ORDER

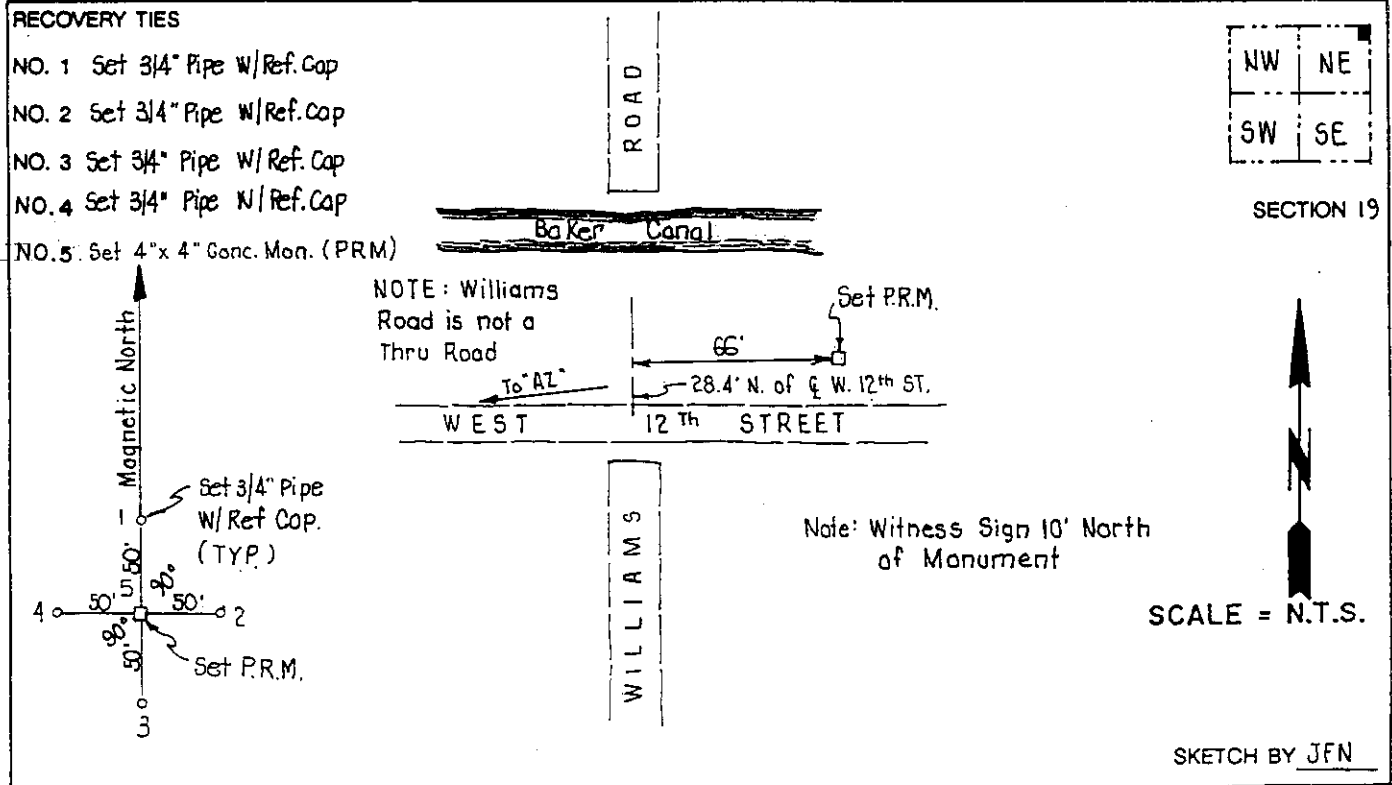
NORTHING (Y) 839369.170 NORTHING (Y) 839538.793

EASTING (X) 615442.753 EASTING (X) 771673.959

GRID FLORIDA TRANSVERSE MERCATOR RECOVERED BY _____

ZONE WEST DATE, CONDITION _____

FIELD BOOK 1738 PAGE 14



JOHNSON ENGINEERING, INC.

CIVIL ENGINEERS - LAND SURVEYORS
 2158 JOHNSON STREET, POST OFFICE BOX 1550, FORT MYERS, FLORIDA, 33902-1550
 PHONE (813) 334-0046