

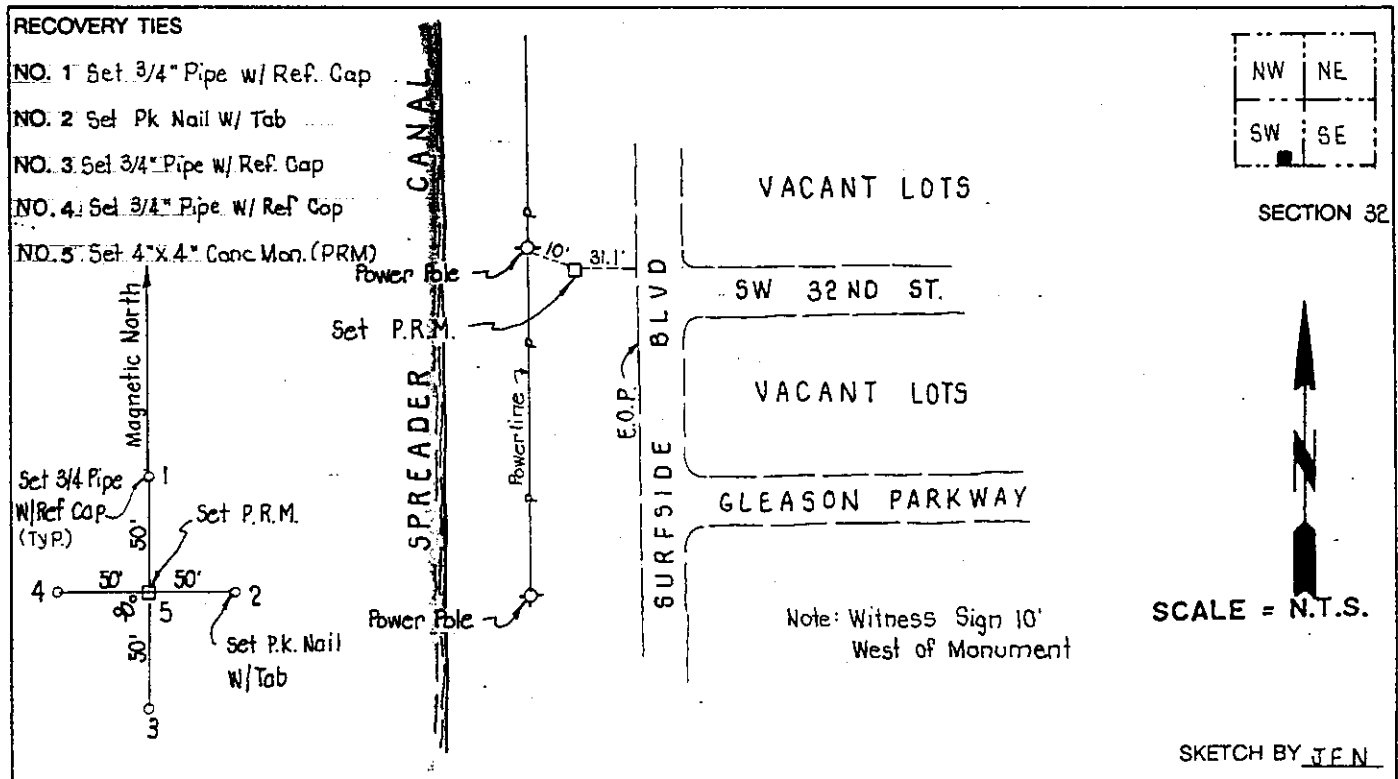
# LEE COUNTY SURVEY MARK DESCRIPTION

DESIGNATION 44-23-32 COUNTY LEE STATE FL.  
 LOCATED IN SEC 32 TWP 44S. RGE 23E. USGS QUAD MAP Pine Island Center

**TO REACH SURVEY MARK:**

Station is at the intersection of Surfside Blvd. and S.W. 32nd Street. Mark is 31.1' west of the west edge of pavement Surfside Blvd., 10' southeast of a power pole and 10' east of a witness sign.

TYPE OF 4" X 4" Concrete Monument With Brass Disk  
 MARK 44-23-32 DATE SET May 3, 1990  
 HORIZONTAL CONTROL ORIGINATED ON 2<sup>nd</sup>/1<sup>st</sup> ORDER CONTROL BY USC & GS / NGS  
 ON 1927 DATUM. ON 1983 (1990 GPS Adjustment) DATUM.  
 COORDINATES (FT), 2<sup>nd</sup> ORDER COORDINATES (FT), 2<sup>nd</sup> ORDER  
 NORTHING (Y) 821004.078 NORTHING (Y) 821173.987  
 EASTING (X) 488235.205 EASTING (X) 644465.840  
 GRID FLORIDA TRANSVERSE MERCATOR RECOVERED BY \_\_\_\_\_  
 ZONE WEST DATE, CONDITION \_\_\_\_\_  
 FIELD BOOK 1738 PAGE 73



**JOHNSON ENGINEERING, INC.**  
 CIVIL ENGINEERS - LAND SURVEYORS  
 2158 JOHNSON STREET, POST OFFICE BOX 1550, FORT MYERS, FLORIDA, 33902-1550  
 PHONE (813) 334-0046