

# LEE COUNTY SURVEY MARK DESCRIPTION

DESIGNATION 44-23-17-02 COUNTY LEE STATE FL.  
 LOCATED IN SEC 17 TWP 44S. RGE 23 E. USGS QUAD MAP Matlacha

**TO REACH SURVEY MARK:**

From the intersection of S.R. 78 (Pine Island Road) and S.R. 765 (Burnt Store Road); thence northerly along S.R. 765 0.45 miles to S.W. 4th Terrace and the mark. The mark is 10' east of a witness sign.

TYPE OF 4" x 4" Concrete Monument With Brass Disk

MARK GPS 44-23-17-02 DATE SET March 23 19 90

HORIZONTAL CONTROL ORIGINATED ON 2<sup>nd</sup>/1<sup>st</sup> ORDER CONTROL BY USC & GS / NGS

ON 1977 DATUM. ON 1983 (1990 Gps Adjustment) DATUM.

COORDINATES (FT), 2<sup>nd</sup> ORDER COORDINATES (FT), 2<sup>nd</sup> ORDER

NORTHING (Y) 839766.495 NORTHING (Y) 839936.514

EASTING (X) 486784.114 EASTING (X) 643014.732

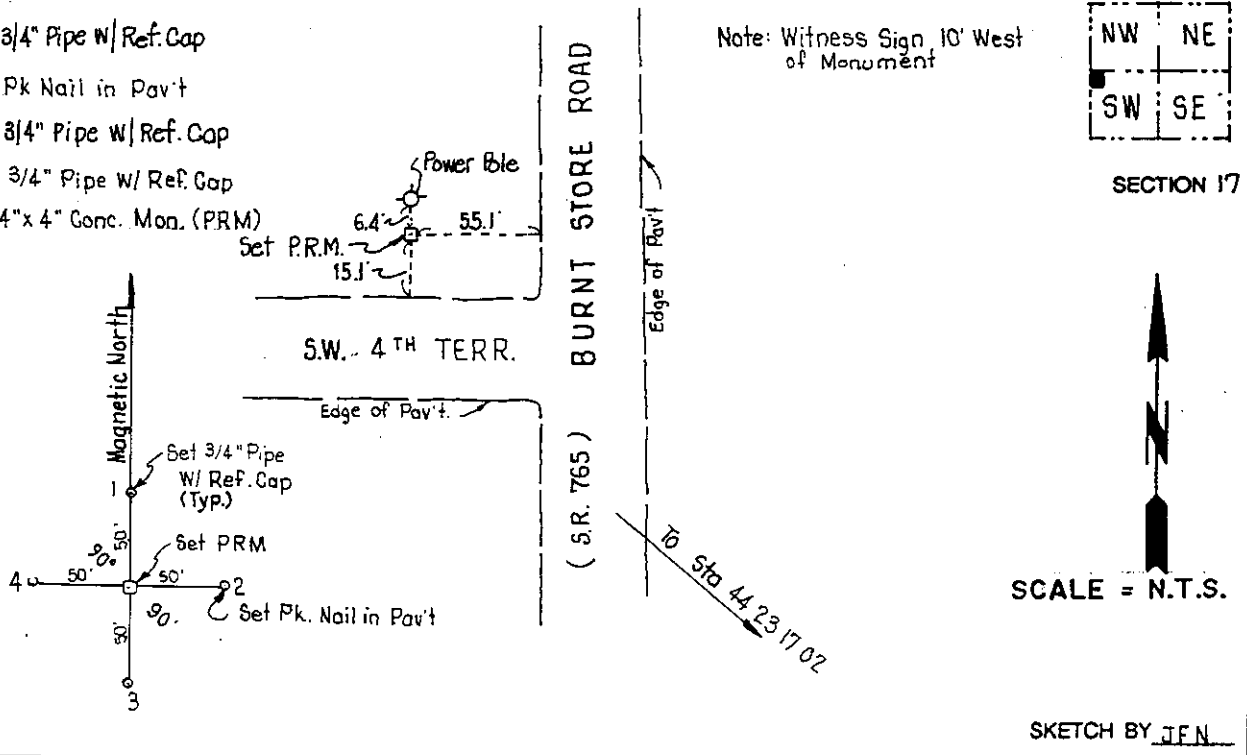
GRID FLORIDA TRANSVERSE MERCATOR RECOVERED BY \_\_\_\_\_

ZONE WEST DATE, CONDITION \_\_\_\_\_

FIELD BOOK 1738 PAGE 50

**RECOVERY TIES**

- NO. 1 Set 3/4" Pipe w/ Ref. Cap
- NO. 2 Set Pk Nail in Pav't
- NO. 3 Set 3/4" Pipe w/ Ref. Cap
- NO. 4 Set 3/4" Pipe w/ Ref. Cap
- NO. 5 Set 4"x 4" Conc. Mon. (PRM)



**JOHNSON ENGINEERING, INC.**

CIVIL ENGINEERS - LAND SURVEYORS  
 2158 JOHNSON STREET, POST OFFICE BOX 1550, FORT MYERS, FLORIDA, 33902-1550  
 PHONE (813) 334-0046