

# LEE COUNTY SURVEY MARK DESCRIPTION

DESIGNATION 44-23-06 COUNTY LEE STATE FL.

LOCATED IN SEC 06 TWP 44S. RGE 23E. USGS QUAD MAP Matlachd

**TO REACH SURVEY MARK:**

Station is at the intersection of S.R. 765 (Burnt Store Rd.) and Tropicana Pkwy. West. Mark is in the center median 70' west of the C/L S.R. 765, 45.1' south of a power pole and telephone box, and 10' east of a witness sign.

TYPE OF 4" x 4" Concrete Monument With Brass Disk

MARK 44-23-06 DATE SET April, 19, 19 90

HORIZONTAL CONTROL ORIGINATED ON 2<sup>nd</sup>/1<sup>st</sup> ORDER CONTROL BY USC & GS / NGS

ON 1927 DATUM. ON 1983 (1990 GPS Adjustment) DATUM.

COORDINATES (FT), 2<sup>nd</sup> ORDER COORDINATES (FT), 2<sup>nd</sup> ORDER

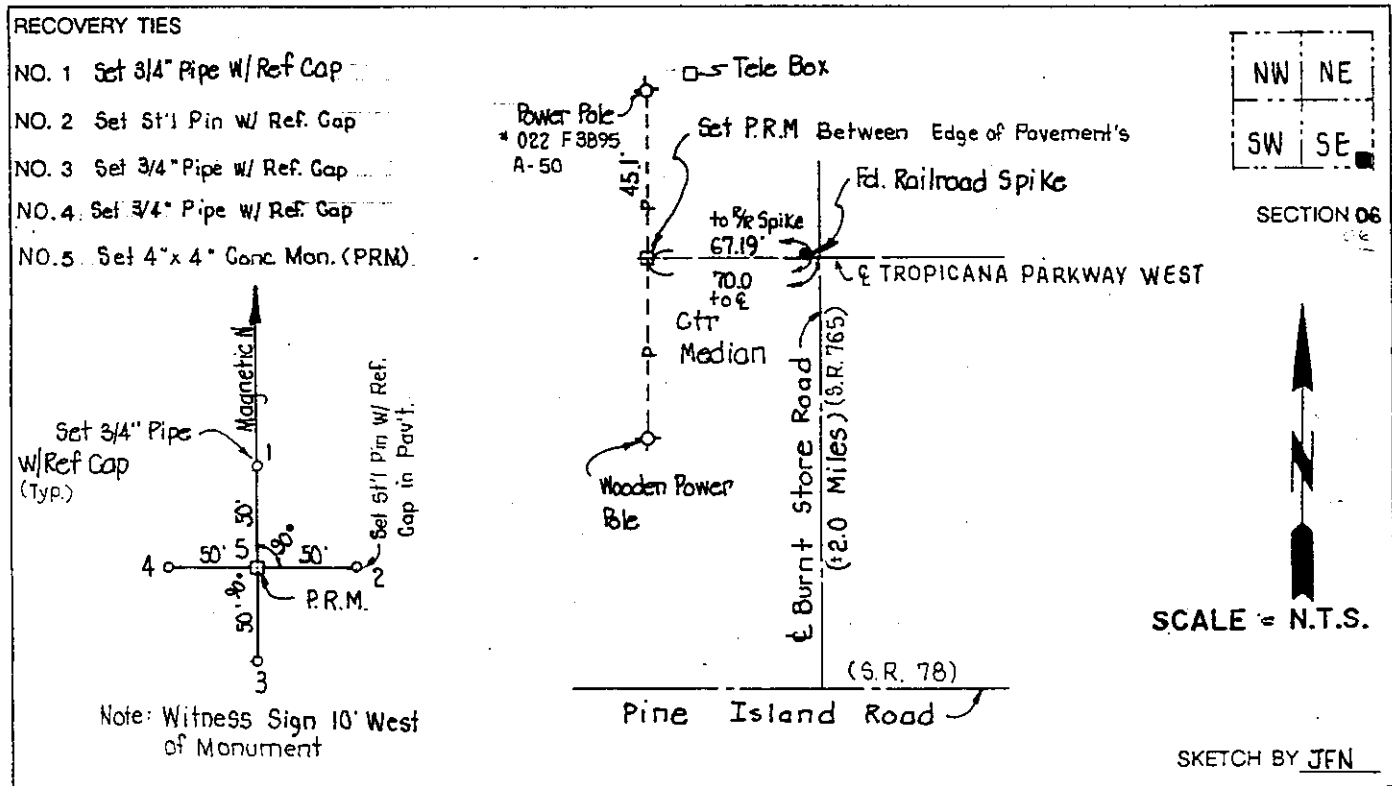
NORTHING (Y) 847973.063 NORTHING (Y) 848143.120

EASTING (X) 48 68 11.143 EASTING (X) 643041.758

GRID FLORIDA TRANSVERSE MERCATOR RECOVERED BY \_\_\_\_\_

ZONE WEST DATE, CONDITION \_\_\_\_\_

FIELD BOOK 1738 PAGE 69



**JOHNSON ENGINEERING, INC.**  
 CIVIL ENGINEERS - LAND SURVEYORS  
 2158 JOHNSON STREET, POST OFFICE BOX 1550, FORT MYERS, FLORIDA, 33902-1550  
 PHONE (813) 334-0046