

# LEE COUNTY SURVEY MARK DESCRIPTION

DESIGNATION 44-23-03 COUNTY LEE STATE FL.

LOCATED IN SEC 03 TWP 44S. RGE 23 E. USGS QUAD MAP Fort Myers N.W.

**TO REACH SURVEY MARK:**

Station is at the intersection of Diplomat Pkwy. and Nelson Blvd. (Cape Coral). Mark is in the southwest quadrant of the intersection, 75' south of C/L median Nelson Blvd., 23.8' southwest of a catch basin, and 10' west of a witness sign.

TYPE OF 4"x4" Concrete Monument With Brass Disk

MARK 44-23-03 DATE SET April 19, 19 90

HORIZONTAL CONTROL ORIGINATED ON 2<sup>nd</sup>/1<sup>st</sup> ORDER CONTROL BY USC & GS / NGS

ON 1927 DATUM. ON 1983 (1990 GPS Adjustment) DATUM.

COORDINATES (FT), 2<sup>nd</sup> ORDER COORDINATES (FT), 2<sup>nd</sup> ORDER

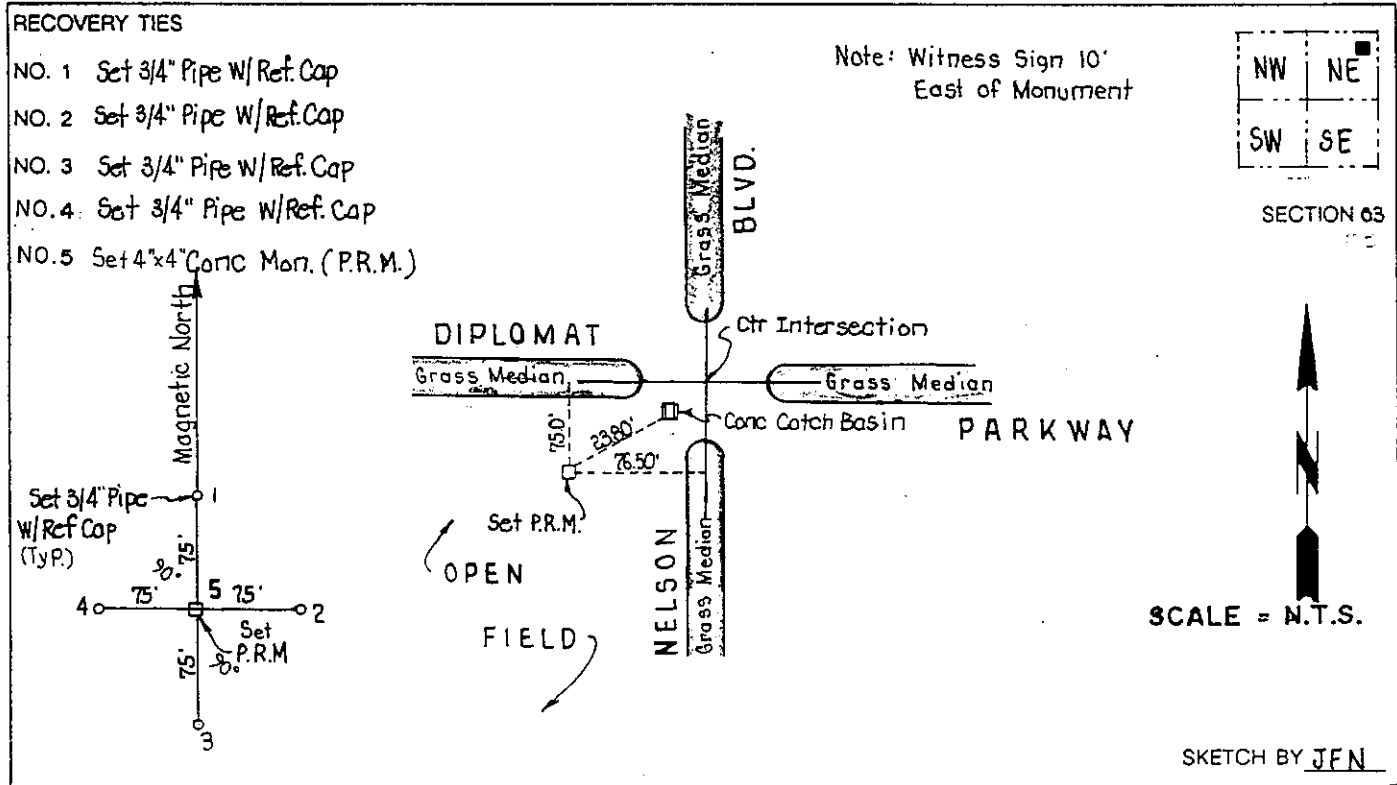
NORTHING (Y) 853407.413 NORTHING (Y) 853577.451

EASTING (X) 503010.700 EASTING (X) 659241.320

GRID FLORIDA TRANSVERSE MERCATOR RECOVERED BY \_\_\_\_\_

ZONE WEST DATE, CONDITION \_\_\_\_\_

FIELD BOOK 1738 PAGE 70



**JOHNSON ENGINEERING, INC.**  
CIVIL ENGINEERS - LAND SURVEYORS

2158 JOHNSON STREET, POST OFFICE BOX 1550, FORT MYERS, FLORIDA, 33902-1550  
PHONE (813) 334-0046