

# LEE COUNTY SURVEY MARK DESCRIPTION

DESIGNATION 43-26-24-01 COUNTY LEE STATE FL.  
 LOCATED IN SEC 24 TWP 43S. RGE 26 E. USGS QUAD MAP 01gd

**TO REACH SURVEY MARK:**

From the intersection of S.R. 78 (North River Road) and Telegraph Creek Bridge, travel easterly along S.R. 78 (North River Road) for 2.0 miles to the junction of a creek. The station is 12 feet southerly of the south edge of pavement of said S.R. 78. It is 79.4 feet westerly of the centerline of the creek. It is 26.7 feet northerly of a fence. It is 27.0 feet north of a witness sign.

TYPE OF 4"x4" Concrete Monument With Brass Disk

MARK GPS 43-26-24-01 DATE SET March 14, 19 90

HORIZONTAL CONTROL ORIGINATED ON 2<sup>nd</sup>/1<sup>st</sup> ORDER CONTROL BY U.S.C. & GS/NGS

ON 1927 DATUM. ON 1983 (1990 GPS Adjustment) DATUM.

COORDINATES (FT), 2<sup>nd</sup> ORDER COORDINATES (FT), 2<sup>nd</sup> ORDER

NORTHING (Y) 869078.329 NORTHING (Y) 869248.300

EASTING (X) 608074.044 EASTING (X) 764305.191

GRID: FLORIDA TRANSVERSE MERCATOR RECOVERED BY \_\_\_\_\_

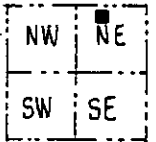
ZONE WEST DATE, CONDITION \_\_\_\_\_

FIELD BOOK 1738 PAGE 26

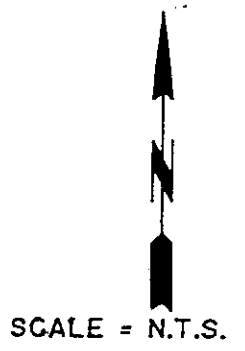
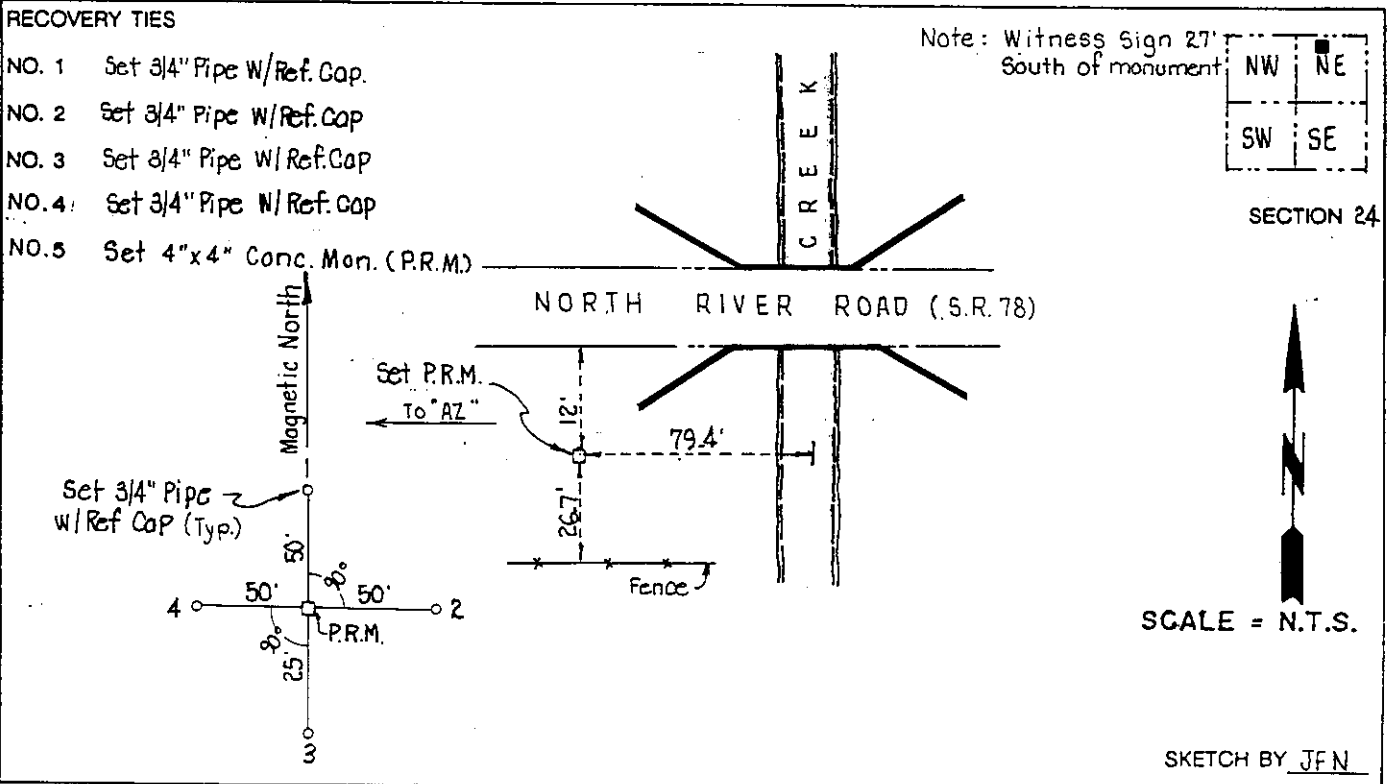
**RECOVERY TIES**

- NO. 1 Set 3/4" Pipe w/Ref. Cap.
- NO. 2 Set 3/4" Pipe w/Ref. Cap.
- NO. 3 Set 3/4" Pipe w/Ref. Cap.
- NO. 4 Set 3/4" Pipe w/Ref. Cap.
- NO. 5 Set 4"x4" Conc. Mon. (P.R.M.)

Note: Witness Sign 27' South of monument



SECTION 24



SKETCH BY JFN

## JOHNSON ENGINEERING, INC.

CIVIL ENGINEERS - LAND SURVEYORS  
 2158 JOHNSON STREET, POST OFFICE BOX 1550, FORT MYERS, FLORIDA, 33902-1550  
 PHONE (813) 334-0046