

LEE COUNTY SURVEY MARK DESCRIPTION

DESIGNATION 43-26-15 COUNTY LEE STATE FL.
 LOCATED IN SEC 15 TWP 43S. RGE 26E. USGS QUAD MAP 01ga

TO REACH SURVEY MARK:

From the intersection of S.R. 31 and S.R. 78 (N. River Rd) travel easterly along S.R. 78 about 3 miles to a curve in the road to the south. Point is 5' west of a fence along E. R/W, 179 feet south of Power Pole No. 483068-10, 10 feet northwest of a witness sign.

TYPE OF 4" X 4" Concrete Monument With Brass Disk

MARK 43-26-15 DATE SET March 8, 1990

HORIZONTAL CONTROL ORIGINATED ON 2nd/1st ORDER CONTROL BY U.S.C. & GS / NGS

ON 1927 DATUM. ON 1983 (1990 GPS adjustment) DATUM.

COORDINATES (FT), 2nd ORDER COORDINATES (FT), 2nd ORDER

NORTHING (Y) 873327.197

NORTHING (Y) 873497.213

EASTING (X) 593762.672

EASTING (X) 749993.763

GRID FLORIDA TRANSVERSE MERCATOR

RECOVERED BY _____

ZONE WEST

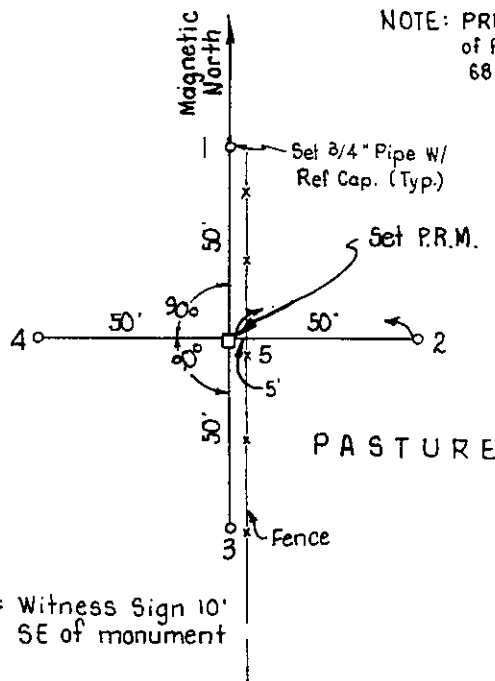
DATE, CONDITION _____

FIELD BOOK 1738 PAGE 10

RECOVERY TIES

- NO. 1 Set 3/4" Pipe W/ Ref. Cap
- NO. 2 Set 3/4" Pipe W/ Ref. Cap
- NO. 3 Set 3/4" Pipe W/ Ref. Cap
- NO. 4 Set 3/4" Pipe W/ Ref. Cap
- NO. 5 Set 4" x 4" Conc. Mon. (PRM)

E.O.P. West bound Lane (S.R. 78) North River Road



NW	NE
SW	SE

SECTION 15



SCALE = N.T.S.

Note: Witness Sign 10' SE of monument

SKETCH BY JFN

JOHNSON ENGINEERING, INC.

CIVIL ENGINEERS - LAND SURVEYORS
 2158 JOHNSON STREET, POST OFFICE BOX 1550, FORT MYERS, FLORIDA, 33902-1550
 PHONE (813) 334-0046