

# LEE COUNTY SURVEY MARK DESCRIPTION

DESIGNATION 43-25-24 COUNTY LEE STATE FL.

LOCATED IN SEC 24 TWP 43S. RGE 25 E. USGS QUAD MAP Fort Myers

**TO REACH SURVEY MARK:**

From the intersection of S.R. 78 (North River Road) and S.R. 31 travel south along S.R. 31 for 1.0 mile to the station. Mark is north of the junction with Bayshore Rd. underneath an overhead powerline, 47.30' west of the west edge of pavement S.R. 31, 38.3' north of power pole #S5046CC, and 10' east of a witness sign.

TYPE OF 4" x 4" Concrete Monument With Brass Disk

MARK 43-25-24 DATE SET April 19 19 90

HORIZONTAL CONTROL ORIGINATED ON 2<sup>nd</sup>/1<sup>st</sup> ORDER CONTROL BY U.S.C. & G.S./NGS

ON 1927 DATUM. ON 1983 (1990 GPS Adjustment) DATUM.

COORDINATES (FT), 2<sup>nd</sup> ORDER COORDINATES (FT), 2<sup>nd</sup> ORDER

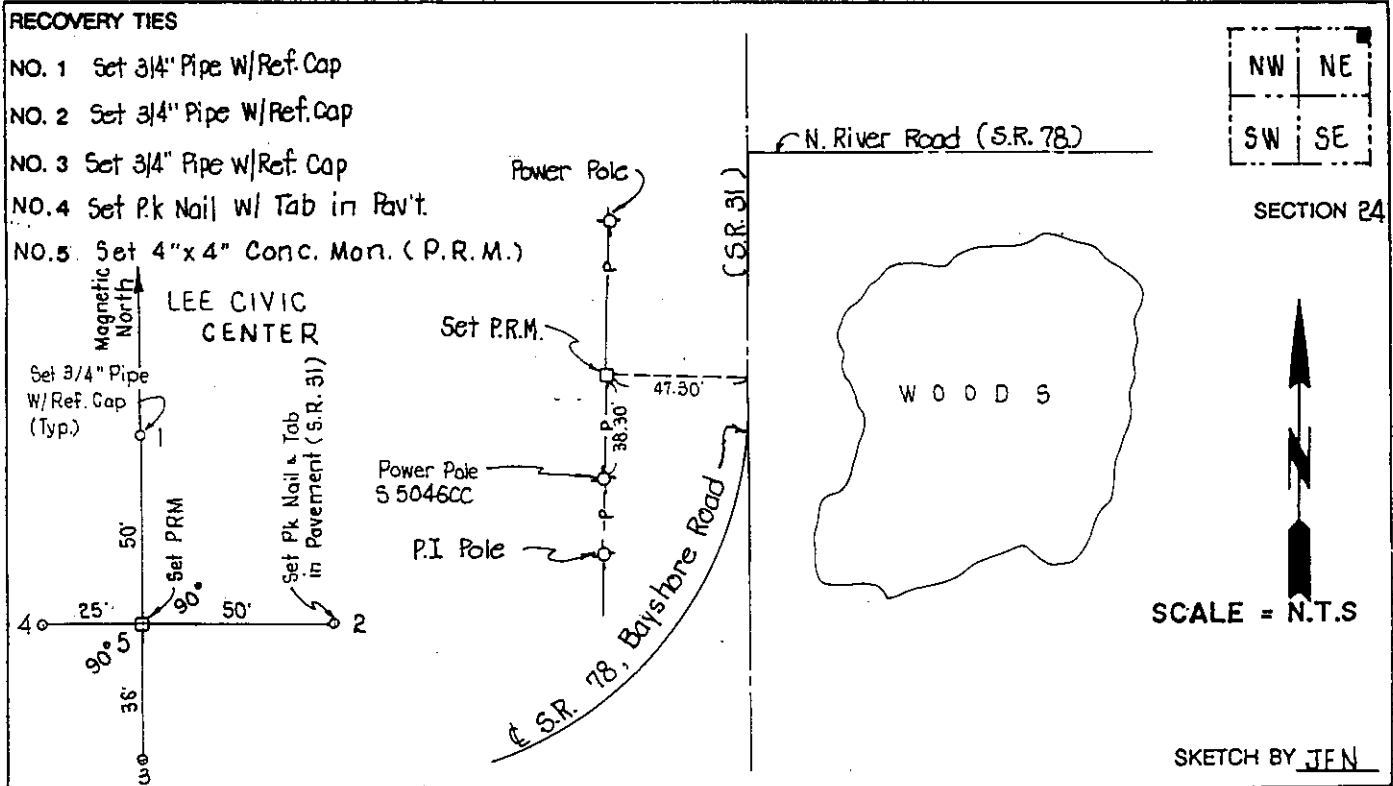
NORTHING (Y) 869040.248 NORTHING (Y) 869210.275

EASTING (X) 577919.884 EASTING (X) 734150.893

GRID FLORIDA TRANSVERSE MERCATOR RECOVERED BY \_\_\_\_\_

ZONE WEST DATE, CONDITION \_\_\_\_\_

FIELD BOOK 1738 PAGE 66



## JOHNSON ENGINEERING, INC.

CIVIL ENGINEERS - LAND SURVEYORS

2158 JOHNSON STREET, POST OFFICE BOX 1550, FORT MYERS, FLORIDA, 33902-1550

PHONE (813) 334-0046