

# LEE COUNTY SURVEY MARK DESCRIPTION

DESIGNATION I-75 81 A53 COUNTY LEE STATE FL.  
 LOCATED IN SEC 21 TWP 43 S. RGE 25 E. USGS QUAD MAP Fort Myers

**TO REACH SURVEY MARK:**

Mark is on I-75 at the junction of S.R. 78 in the median at the southeast end of the bridge overpass over S.R. 78 (Bayshore Road).

TYPE OF 4"x4" Conc. Mon. w/ Brass Disk

MARK F.D.O.T. I-75-81-A53 DATE REF. March 23, 1990

HORIZONTAL CONTROL ORIGINATED ON 2<sup>nd</sup>/1<sup>st</sup> ORDER CONTROL BY U.S.C. & GS/NGS

ON 1927 DATUM. ON 1983 (1990 GPS Adjustment) DATUM.

COORDINATES (FT), 2<sup>nd</sup> ORDER

NORTHING (Y) 865347.463

EASTING (X) 561482.813

COORDINATES (FT), \_\_\_\_\_ ORDER

NORTHING (Y) 865517.505

EASTING (X) 717713.773

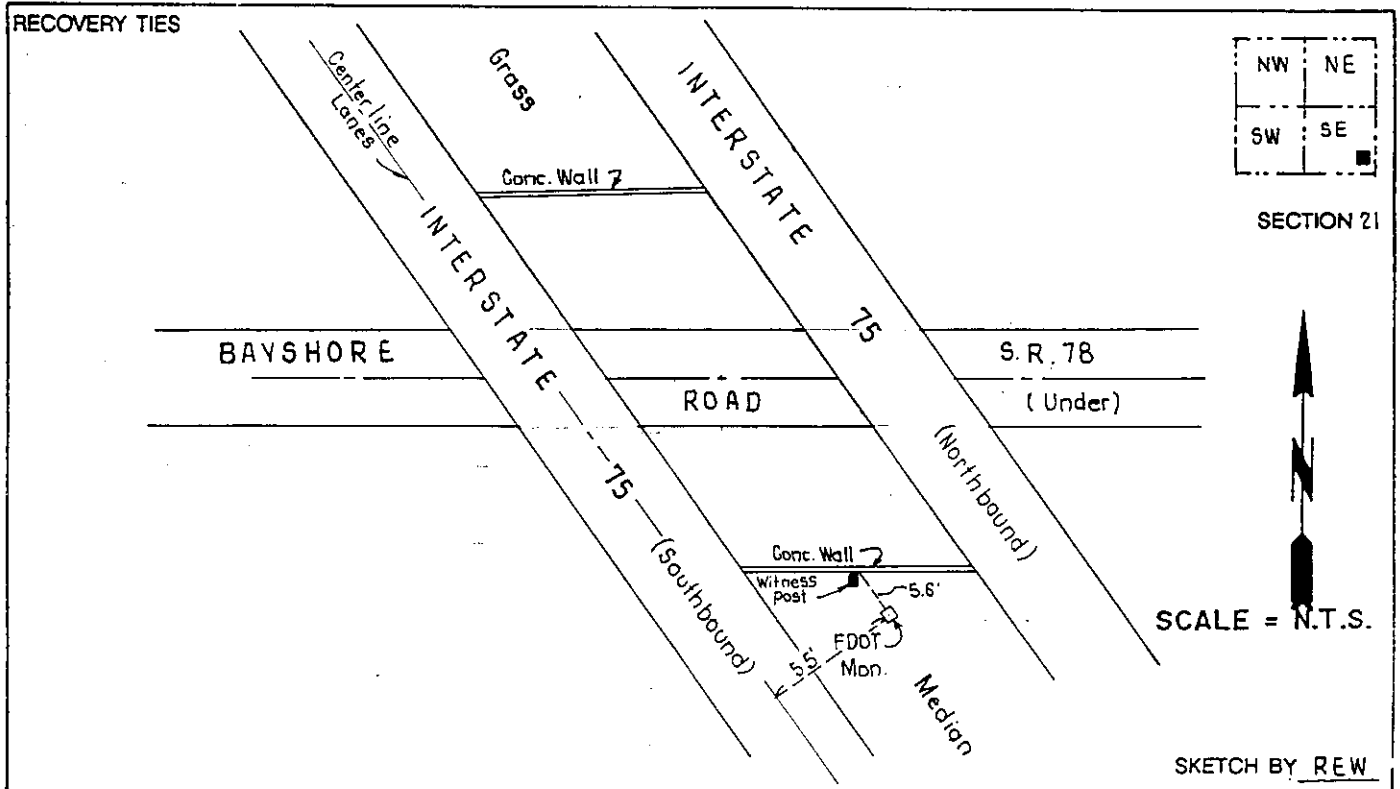
GRID: FLORIDA TRANSVERSE MERCATOR

RECOVERED BY \_\_\_\_\_

ZONE WEST

DATE, CONDITION \_\_\_\_\_

FIELD BOOK 1738 PAGE 46



**JOHNSON ENGINEERING, INC.**  
 CIVIL ENGINEERS - LAND SURVEYORS

2158 JOHNSON STREET, POST OFFICE BOX 1550, FORT MYERS, FLORIDA, 33902-1550  
 PHONE (813) 334-0046

# LEE COUNTY SURVEY MARK DESCRIPTION



SURVEY CONTROL BY:  
DENI ASSOCIATES, INC.  
FORT MYERS, FLORIDA

MAPPING BY:  
WOOLPERT CONSULTANTS

DESIGNATION F.D.O.T. I-75- B1 A53 (9015) COUNTY LEE STATE FL  
 LOCATED IN SEC 21 TWP 44S RGE 25E USGS QUAD MAP FORT MYERS  
 TO REACH SURVEY MARK FROM THE INTERSECTION OF BAYSHORE RD (CR 78) & I-75 @ THE SOUTH END OF BRIDGE ATOP OVERPASS

TYPE OF 3" DIAMETER BRASS DISK IN CONCRETE 0.5 FT BELOW GROUND;  
 MARK "FL DOT" DATE SET GPS 1990

HORIZONTAL CONTROL ORIGINATED ON 1st ORDER HORIZONTAL CONTROL ORIGINATED ON \_\_\_\_\_ ORDER  
 CONTROL BASED ON FLORIDA HIGH PRECISION GPS NETWORK, CONTROL BY \_\_\_\_\_  
 ON NORTH AMERICAN DATUM OF 1983, 1990 ADJUSTMENT ON \_\_\_\_\_ DATUM  
 COORDINATES (FT), 1st ORDER COORDINATES (FT), \_\_\_\_\_ ORDER

NORTHING (Y) 865,517.505

NORTHING (Y) \_\_\_\_\_

EASTING (X) 717,713.773

EASTING (X) \_\_\_\_\_

GRID FLORIDA TRANSVERSE MERCATOR

RECOVERED BY \_\_\_\_\_

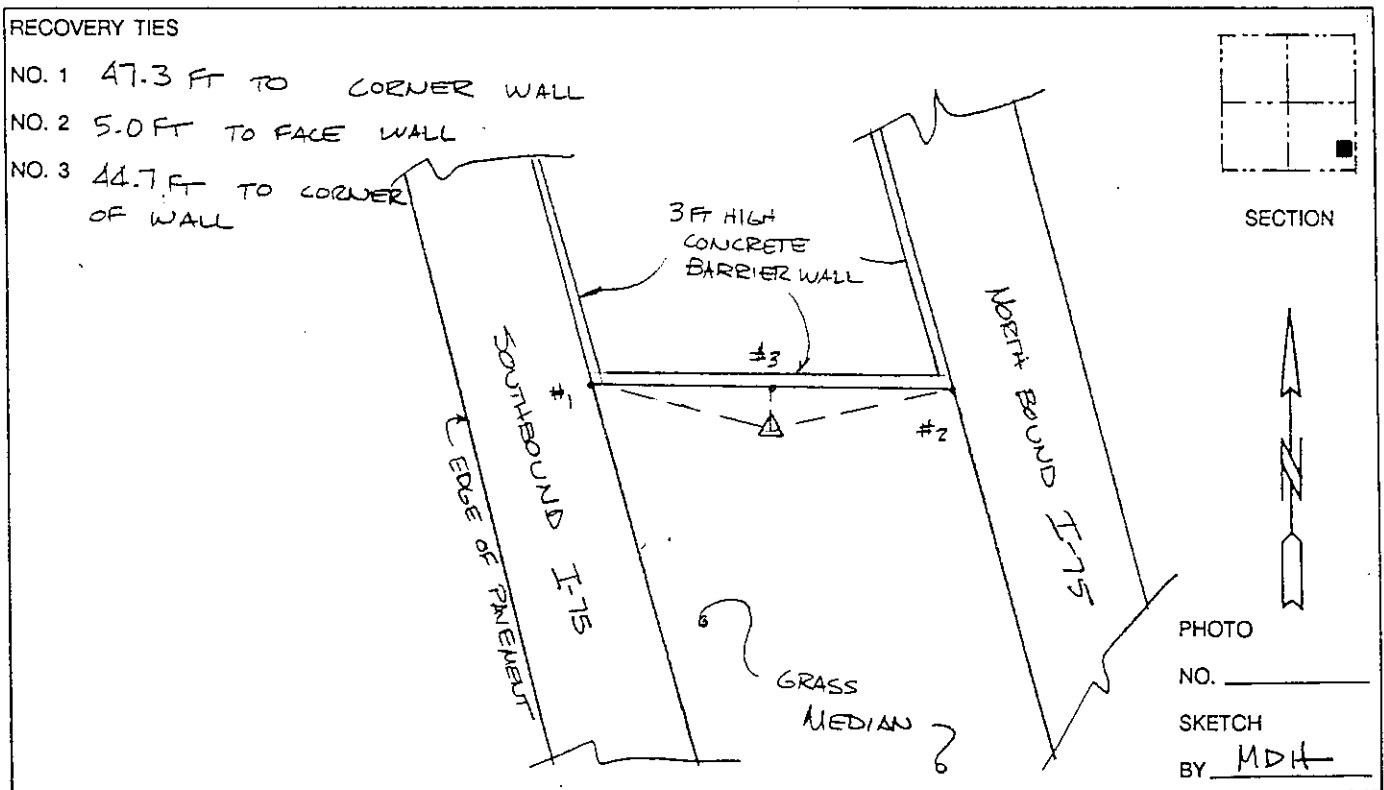
ZONE WEST SCALE FACTOR .999946

DATE, CONDITION \_\_\_\_\_

FIELD BOOK \_\_\_\_\_ PAGE \_\_\_\_\_

**RECOVERY TIES**

- NO. 1 47.3 FT TO CORNER WALL
- NO. 2 5.0 FT TO FACE WALL
- NO. 3 44.7 FT TO CORNER OF WALL



VERTICAL CONTROL ORIGINATED ON 2nd ORDER CONTROL ESTABLISHED BY N. G. S. AND F. D. O. T.

ON NATIONAL GEODETIC VERTICAL DATUM OF 1929.

ELEVATION (FT) \_\_\_\_\_ 3rd ORDER

LEVEL BOOK \_\_\_\_\_ PAGE \_\_\_\_\_