

# LEE COUNTY SURVEY MARK DESCRIPTION

DESIGNATION 43-24-22-01 COUNTY LEE STATE FL.

LOCATED IN SEC 22 TWP 43S. RGE 24E. USGS QUAD MAP Fort Myers N.W.

**TO REACH SURVEY MARK:**

From the intersection of U.S. 41 and Business 41 (North Fort Myers); thence north along U.S. 41 for 0.80 mile to the intersection of U.S. 41 and the east-west transmission line; thence easterly along said transmission line, 0.80 mile to the mark. The mark is 10' north of a witness sign, 32' south of the centerline of the power line grade road.

TYPE OF 4" x 4" Concrete Monument With Brass Disk

MARK GPS43-24-22-01 DATE SET March 22, 19 90

HORIZONTAL CONTROL ORIGINATED ON 2<sup>nd</sup>/1<sup>st</sup> ORDER CONTROL BY U.S.C. & GS / NGS

ON 1927 DATUM. ON 1983 (1990 GPS Adjustment) DATUM.

COORDINATES (FT), 2<sup>nd</sup> ORDER COORDINATES (FT), 2<sup>nd</sup> ORDER

NORTHING (Y) 869446.141 NORTHING (Y) 869616.277

EASTING (X) 535168.297 EASTING (X) 691399.114

GRID FLORIDA TRANSVERSE MERCATOR RECOVERED BY \_\_\_\_\_

ZONE WEST DATE, CONDITION \_\_\_\_\_

FIELD BOOK 1738 PAGE 41

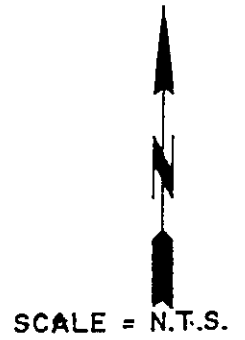
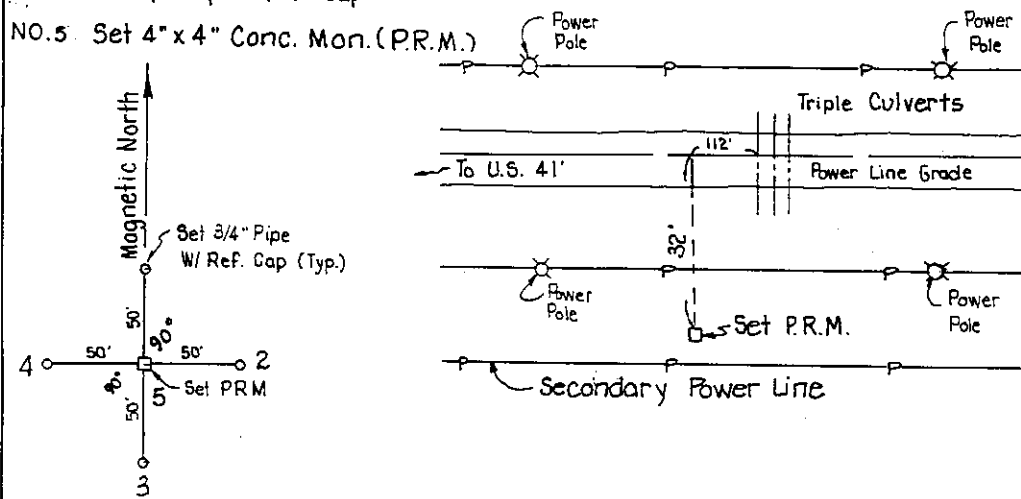
**RECOVERY TIES**

- NO. 1 Set 3/4" Pipe w/ Ref. Cap
- NO. 2 Set 3/4" Pipe w/ Ref. Cap
- NO. 3 Set 3/4" Pipe w/ Ref. Cap
- NO. 4 Set 3/4" Pipe w/ Ref. Cap
- NO. 5 Set 4" x 4" Conc. Mon. (P.R.M.)

Note: Witness Sign 10' South of Monument



SECTION 22



SKETCH BY JFN

## JOHNSON ENGINEERING, INC.

CIVIL ENGINEERS - LAND SURVEYORS

2158 JOHNSON STREET, POST OFFICE BOX 1550, FORT MYERS, FLORIDA, 33902-1550  
PHONE (813) 334-0046