

LEE COUNTY SURVEY MARK DESCRIPTION

DESIGNATION 43-24-20-02 COUNTY LEE STATE FL

LOCATED IN SEC 20 TWP 43S RGE 24E USGS QUAD MAP Fort Myers N.W.

TO REACH SURVEY MARK:
From the intersection of Kismet Boulevard and N.E. 7th Place, Cape Coral;
thence northerly along N.E. 7th Place 1.0 mile to the junction of Jacaranda Parkway;
thence easterly along Jacaranda Parkway 1.0 miles to the junction of Averill Boulevard;
thence northerly along Averill Boulevard 0.50 mile to the junction of Gator Circle;
thence easterly and northerly along Gator Circle 0.80 mile to Navarre Parkway and the mark. The mark is 10' west of a witness sign.

TYPE OF 4"x4" Concrete Monument With Brass Disk

MARK GPS 43-24-20-02 DATE SET March 22 1990

HORIZONTAL CONTROL ORIGINATED ON 2nd/1st ORDER CONTROL BY U.S.C. & GS / NGS

ON 1927 DATUM. ON 1983 (1990 GSP Adjustment) DATUM.

COORDINATES (FT), 2nd ORDER COORDINATES (FT), 2nd ORDER

NORTHING (Y) 869-539.272 NORTHING (Y) 869709.404

EASTING (X) 521884.071 EASTING (X) 678114.837

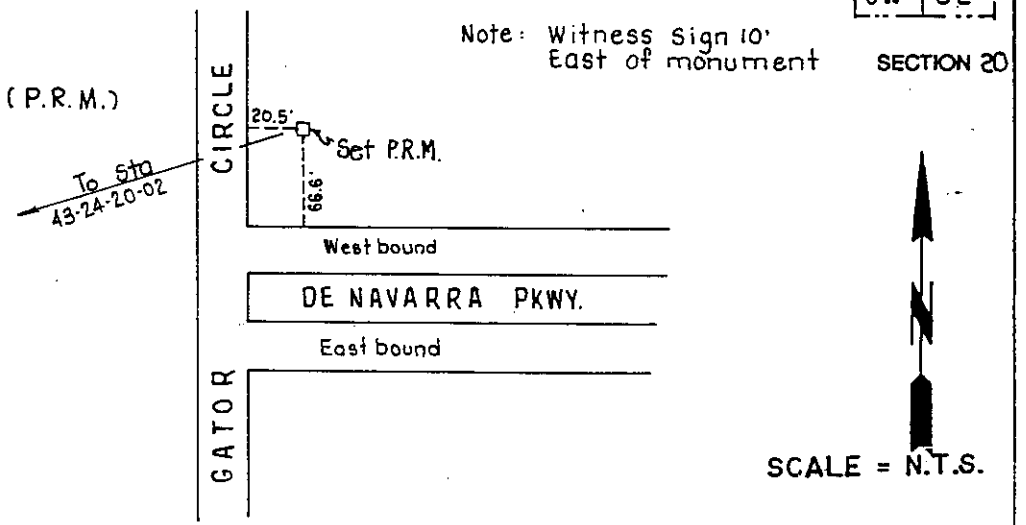
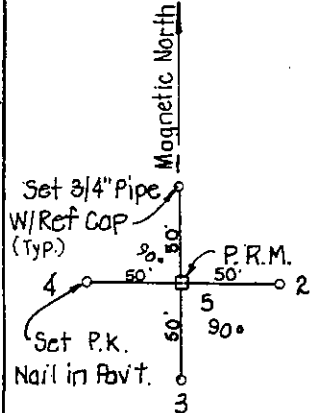
GRID FLORIDA TRANSVERSE MERCATOR RECOVERED BY _____

ZONE WEST DATE, CONDITION _____

FIELD BOOK 1738 PAGE 44

RECOVERY TIES

- NO. 1 Set 3/4" Pipe W/ Ref. Cap.
- NO. 2 Set 3/4" Pipe W/ Ref. Cap.
- NO. 3 Set 3/4" Pipe W/ Ref. Cap.
- NO. 4 Set P.k. Nail in Pav't.
- NO. 5 Set 4"x4" Conc. Mon. (P.R.M.)



SCALE = N.T.S.

SKETCH BY JFN

JOHNSON ENGINEERING, INC.

CIVIL ENGINEERS - LAND SURVEYORS
2158 JOHNSON STREET, POST OFFICE BOX 1550, FORT MYERS, FLORIDA, 33902-1550
PHONE 1813/334-0046