

LEE COUNTY SURVEY MARK DESCRIPTION

DESIGNATION: 5604 COUNTY: LEE STATE: FL

LOCATION IN SEC 08 TWP 47 RGE 25 USGS QUAD MAP ESTERO

TO REACH SURVEY MARK:

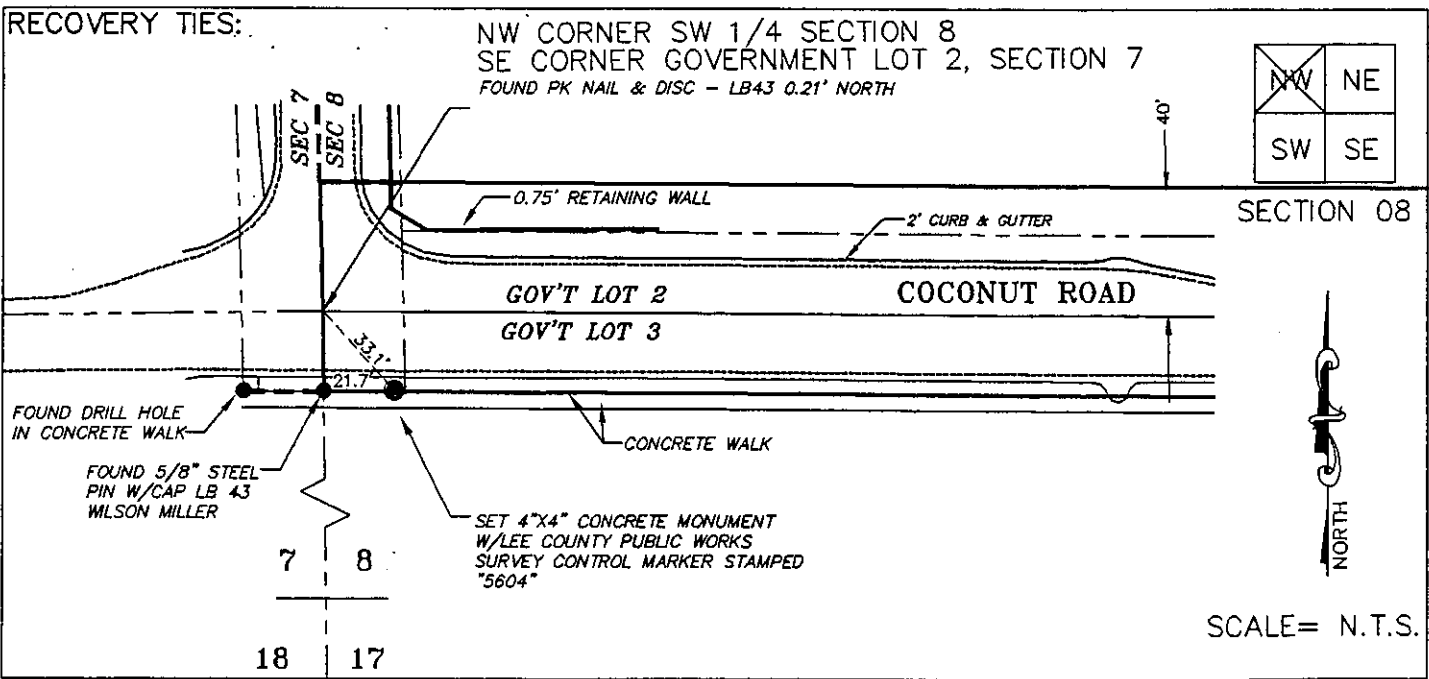
TYPE OF MARK: 4"X4" CONCRETE MONUMENT W/LEE COUNTY PUBLIC WORKS SURVEY
CONTROL MARKER STAMPED "5604" DATE SET: 03\12\99

HORIZ. CONTROL ORIGINATED ON: 2nd/1st ORDER CONTROL BY: USC&GS / NGS
 ON 1927 DATUM. ON 1983 (1990 GPS ADJUSTMENT) DATUM.

COORDINATES (FT.) 2ND ORDER COORDINATES (FT.) 2ND ORDER
 NORTHING (Y): N/A NORTHING (Y): 750352.885
 EASTING (X): N/A EASTING (X): 709816.469

GRID: FLORIDA TRANSVERSE MERCATOR RECOVERED BY _____
 ZONE: WEST DATE, CONDITION _____

FIELD BOOK 2365 PAGE(S) 1-6



JOHNSON ENGINEERING, INC.
 ENGINEERS, SURVEYORS AND ECOLOGISTS

2158 JOHNSON ST., POST OFFICE BOX 1550, FORT MYERS, FLORIDA 33902-1550