

LEE COUNTY  
SURVEY MARK DESCRIPTION

DESIGNATION: 5603 COUNTY: LEE STATE: FL

LOCATION IN SEC 08 TWP 47 RGE 25 USGS QUAD MAP ESTERO

TO REACH SURVEY MARK:

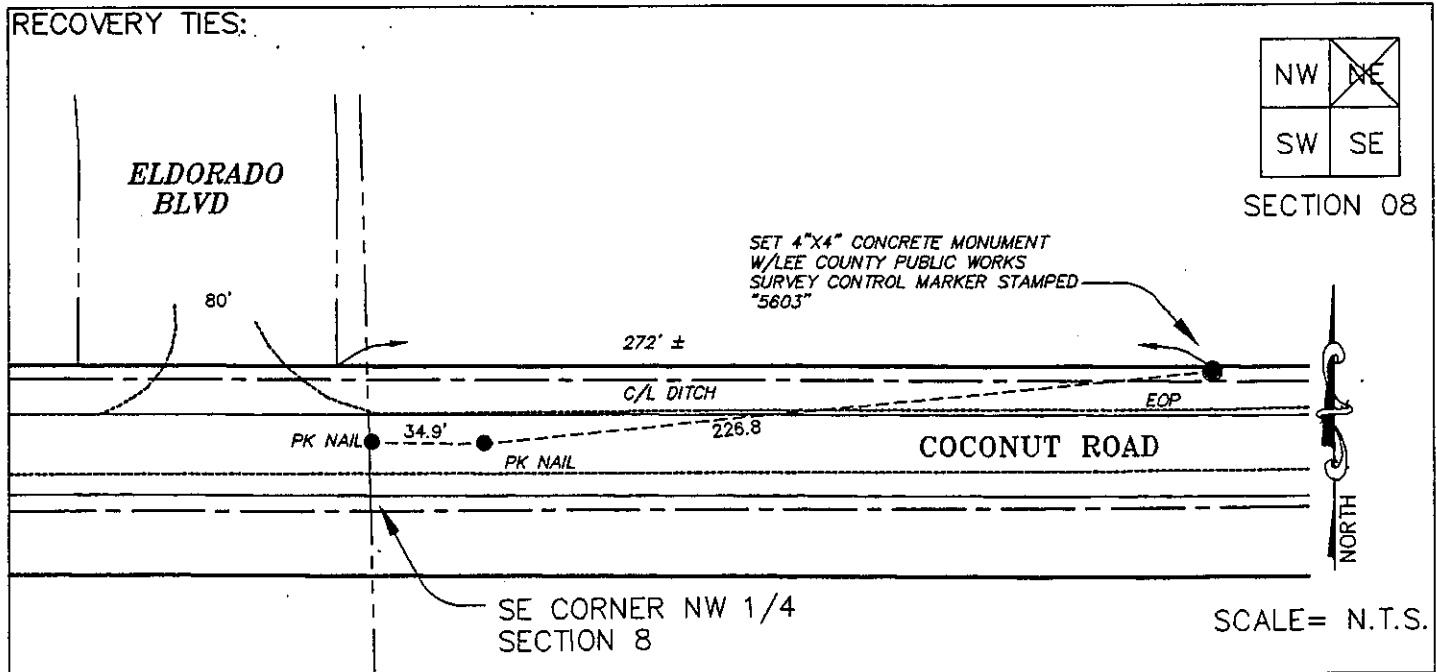
TYPE OF MARK: 4"X4" CONCRETE MONUMENT W/LEE COUNTY PUBLIC WORKS SURVEY  
CONTROL MARKER STAMPED "5603" DATE SET: 03\12\99

HORIZ. CONTROL ORIGINATED ON: 2nd/1st ORDER CONTROL BY: USC&GS / NGS  
 ON 1927 DATUM. ON 1983 (1990 GPS ADJUSTMENT) DATUM.

COORDINATES (FT.) 2ND ORDER COORDINATES (FT.) 2ND ORDER  
 NORTHING (Y): N/A NORTHING (Y): 750402.295  
 EASTING (X): N/A EASTING (X): 712590.997

GRID: FLORIDA TRANSVERSE MERCATOR RECOVERED BY \_\_\_\_\_  
 ZONE: WEST DATE, CONDITION \_\_\_\_\_

FIELD BOOK 2365 PAGE(S) 1-6



**JOHNSON ENGINEERING, INC.**  
 ENGINEERS, SURVEYORS AND ECOLOGISTS

2158 JOHNSON ST., POST OFFICE BOX 1550, FORT MYERS, FLORIDA 33902-1550

46