

LEE COUNTY SURVEY MARK DESCRIPTION

DESIGNATION: 5602 COUNTY: LEE STATE: FL

LOCATION IN SEC 09 TWP 47 RGE 25 USGS QUAD MAP ESTERO

TO REACH SURVEY MARK:

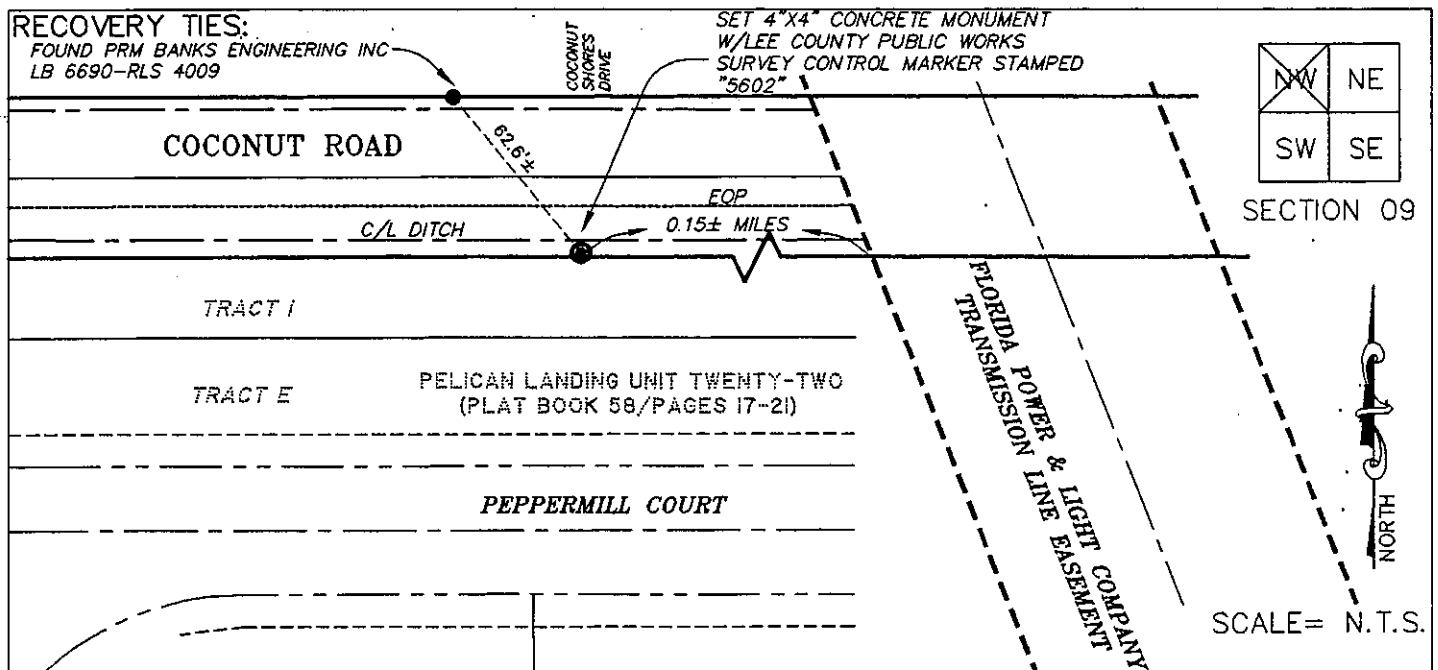
TYPE OF MARK: 4"x4" CONCRETE MONUMENT W/LEE COUNTY PUBLIC WORKS SURVEY CONTROL MARKER STAMPED "5602" DATE SET: 03\12\99

HORIZ. CONTROL ORIGINATED ON: 2nd/1st ORDER CONTROL BY: USC&GS / NGS
ON 1927 DATUM. ON 1983 (1990 GPS ADJUSTMENT) DATUM.

COORDINATES (FT.) <u>2ND ORDER</u>	COORDINATES (FT.) <u>2ND ORDER</u>
NORTHING (Y): <u>N/A</u>	NORTHING (Y): <u>750359.5633</u>
EASTING (X): <u>N/A</u>	EASTING (X): <u>715906.7343</u>

GRID: FLORIDA TRANSVERSE MERCATOR RECOVERED BY _____
ZONE: WEST DATE, CONDITION _____

FIELD BOOK 2365 PAGE(S) 1-6



JOHNSON ENGINEERING, INC.
ENGINEERS, SURVEYORS AND ECOLOGISTS

2158 JOHNSON ST., POST OFFICE BOX 1550, FORT MYERS, FLORIDA 33902-1550

460