

LEE COUNTY  
SURVEY MARK DESCRIPTION

DESIGNATION: 5601 COUNTY: LEE STATE: FL

LOCATION IN SEC 09 TWP 47 RGE 25 USGS QUAD MAP ESTERO

TO REACH SURVEY MARK:

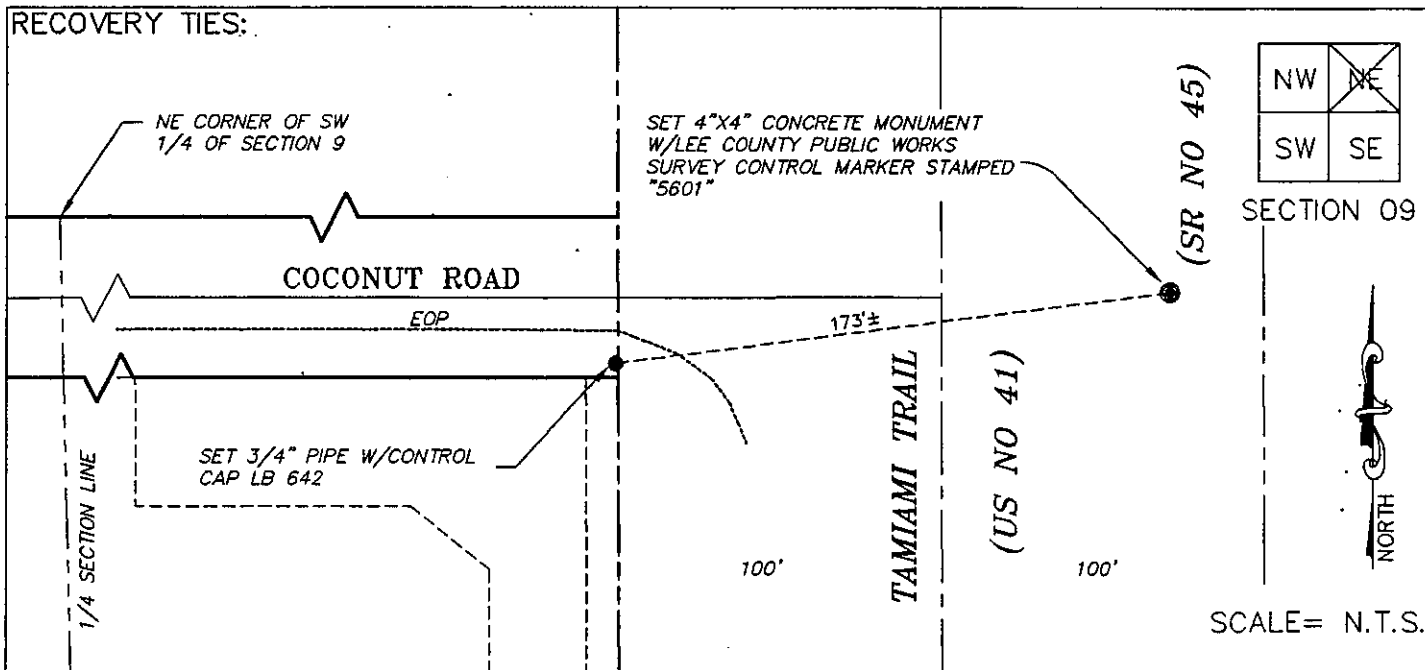
TYPE OF MARK: 4"x4" CONCRETE MONUMENT W/LEE COUNTY PUBLIC WORKS SURVEY  
CONTROL MARKER STAMPED "5601" DATE SET: 03\12\99

HORIZ. CONTROL ORIGINATED ON: 2nd/1st ORDER CONTROL BY: USC&GS / NGS  
ON 1927 DATUM. ON 1983 (1990 GPS ADJUSTMENT) DATUM.

COORDINATES (FT.) 2ND ORDER COORDINATES (FT.) 2ND ORDER  
NORTHING (Y): N/A NORTHING (Y): 750386.5433  
EASTING (X): N/A EASTING (X): 718234.148

GRID: FLORIDA TRANSVERSE MERCATOR RECOVERED BY \_\_\_\_\_  
ZONE: WEST DATE, CONDITION \_\_\_\_\_

FIELD BOOK 2365 PAGE(S) 1-6



JOHNSON ENGINEERING, INC.  
ENGINEERS, SURVEYORS AND ECOLOGISTS

2158 JOHNSON ST., POST OFFICE BOX 1550, FORT MYERS, FLORIDA 33902-1550

459