

LEE COUNTY PUBLIC WORKS
GPS SURVEY MARK DESCRIPTION

GPS CONTROL BY:
DENI ASSOCIATES, INC.
FORT MYERS, FLORIDA

NORTH & EAST FORT MYERS
WATER QUALITY
LEE COUNTY, FLORIDA

DESIGNATION LC 67-54 GPS No. A139 COUNTY LEE STATE FLORIDA
LOCATED IN SECTION 3 TWP 44 RGE 24 USGS QUAD MAP FORT MYERS NW
TO REACH FROM THE INTERSECTION OF U.S. 41 AND PINE ISLAND ROAD (S.R. 78); GO WEST 0.1 +/- MILE
TO HERON RD. SOUTH; THEN GO SOUTH 0.1 +/- MILE TO RESIDENCE #100 ON WEST SIDE OF ROAD; THEN
GO WEST 300' +/- TO MARK IN CENTER OF CONCRETE HEADWALL AT NORTH END OF CANAL.

MARK 3-1/4" LEE COUNTY BENCHMARK / DENI ASSOCIATES ALUMINUM DISK

MARK EXISTING VALUES AS PUBLISHED BY _____
 MARK SET VALUES ESTABLISHED BY DENI ASSOCIATES, INC. DATE 2000

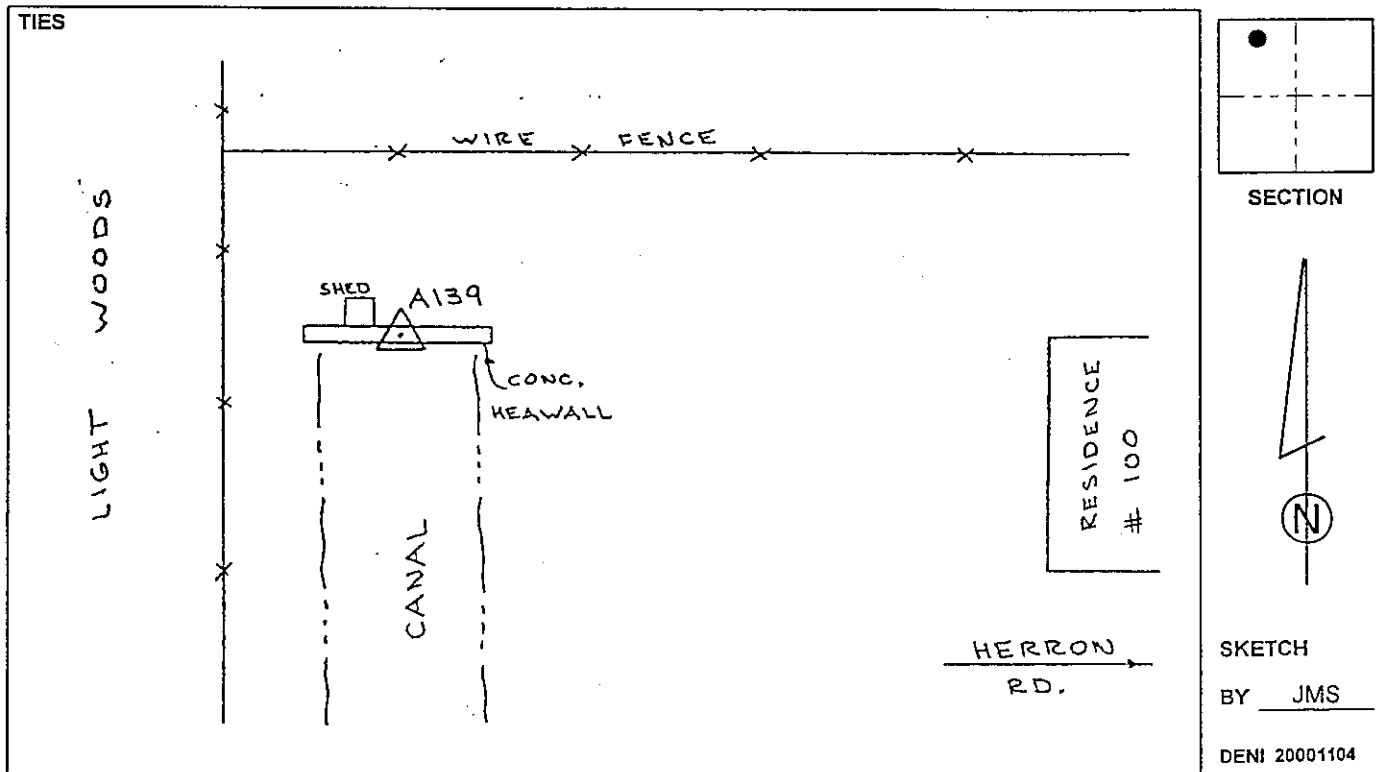
HORIZONTAL VALUES ORIGINATED ON ORDER "B" FLORIDA HIGH ACCURACY REFERENCE NETWORK (HARN) CONTROL ESTABLISHED BY THE NATIONAL GEODETIC SURVEY AND BASED ON THE NORTH AMERICAN DATUM OF 1983, 1990 ADJUSTMENT.

FLORIDA COORDINATE SYSTEM: TRANSVERSE MERCATOR, WEST ZONE SCALE FACTOR: 0.99994230

COORDINATES:	US FEET	METERS		
NORTHING (Y)	<u>853232.149</u>	<u>260065.679</u>	LATITUDE	<u>N 26° 40' 51.64886"</u>
EASTING (X)	<u>687403.842</u>	<u>209521.110</u>	LONGITUDE	<u>W 81° 54' 15.61311"</u>

VERTICAL VALUES ORIGINATED ON VERTICAL CONTROL ESTABLISHED BY THE NATIONAL GEODETIC SURVEY AND BASED ON THE NATIONAL GEODETIC VERTICAL DATUM OF 1929 (NGVD29) THE NORTH AMERICAN VERTICAL DATUM OF 1988 (NAVD88)

ELEVATION (US FEET)	<u>10.26</u>	ELEVATION (US FEET)	<u>9.09</u>
ELEVATION (METERS)	<u>3.127</u>	ELEVATION (METERS)	<u>2.769</u>



452