

LEE COUNTY PUBLIC WORKS
GPS SURVEY MARK DESCRIPTION

GPS CONTROL BY:
DENI ASSOCIATES, INC.
FORT MYERS, FLORIDA

NORTH & EAST FORT MYERS
WATER QUALITY
LEE COUNTY, FLORIDA

DESIGNATION A138 GPS No. A138 COUNTY LEE STATE FLORIDA
LOCATED IN SECTION 22 TWP 43 RGE 24 USGS QUAD MAP FORT MYERS NW
TO REACH FROM THE INTERSECTION OF U.S. 41 & OLD U.S 41 IN NORTH FORT MYERS; GO N'LY 0.1 +/- MILE
TO MARK IN NORTH END OF CONCRETE MEDIAN.

MARK 3-1/4" LEE COUNTY PUBLIC WORKS ALUMINUM DISK

MARK EXISTING VALUES AS PUBLISHED BY _____
 MARK SET VALUES ESTABLISHED BY DENI ASSOCIATES, INC. DATE 2000

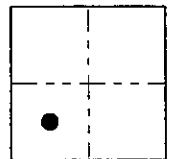
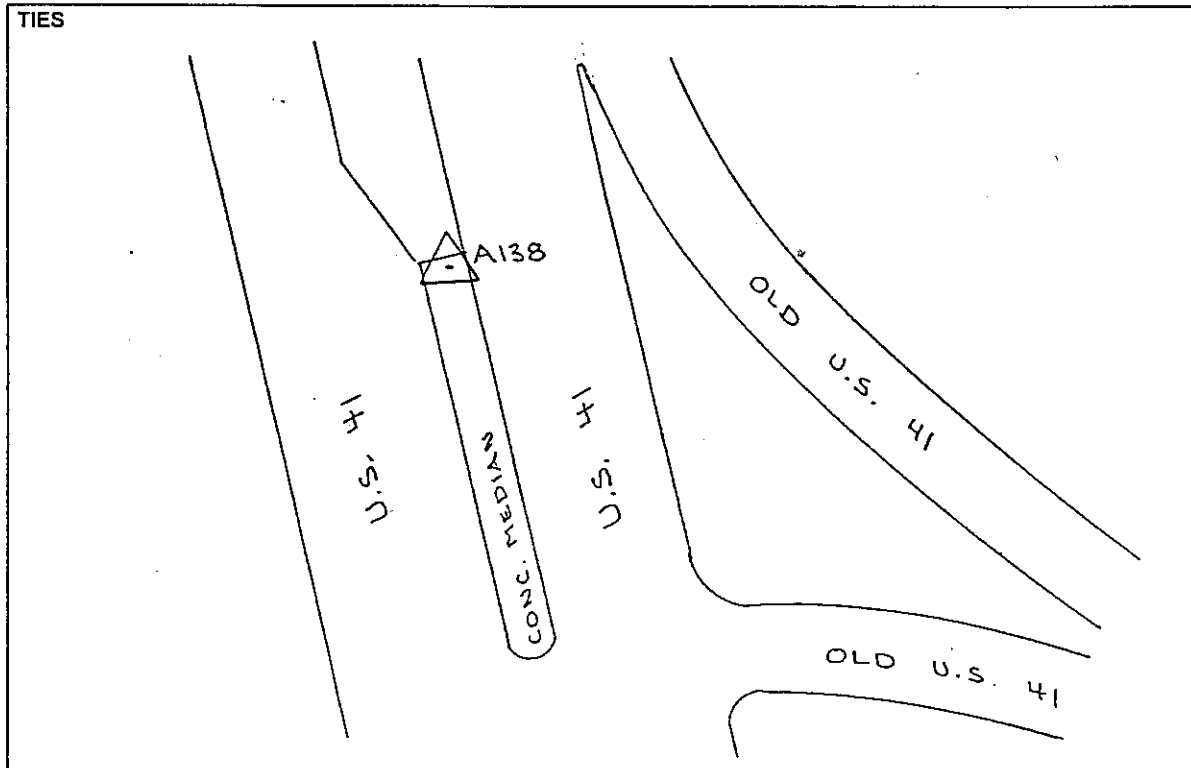
HORIZONTAL VALUES ORIGINATED ON ORDER "B" FLORIDA HIGH ACCURACY REFERENCE NETWORK (HARN) CONTROL ESTABLISHED BY THE NATIONAL GEODETIC SURVEY AND BASED ON THE NORTH AMERICAN DATUM OF 1983, 1990 ADJUSTMENT.

FLORIDA COORDINATE SYSTEM: TRANSVERSE MERCATOR, WEST ZONE SCALE FACTOR: 0.99994233

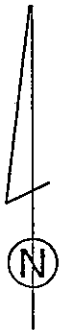
COORDINATES:	US FEET	METERS		
NORTHING (Y)	<u>865256.114</u>	<u>263730.591</u>	LATITUDE	<u>N 26° 42' 50.73017"</u>
EASTING (X)	<u>687859.507</u>	<u>209659.997</u>	LONGITUDE	<u>W 81° 54' 10.48853"</u>

VERTICAL VALUES ORIGINATED ON VERTICAL CONTROL ESTABLISHED BY THE NATIONAL GEODETIC SURVEY AND BASED ON THE NATIONAL GEODETIC VERTICAL DATUM OF 1929 (NGVD29) THE NORTH AMERICAN VERTICAL DATUM OF 1988 (NAVD88)

ELEVATION (US FEET)	<u>21.33</u>	ELEVATION (US FEET)	<u>20.17</u>
ELEVATION (METERS)	<u>6.501</u>	ELEVATION (METERS)	<u>6.146</u>



SECTION



SKETCH
BY JMS

DENI 20001104 451