

**LEE COUNTY PUBLIC WORKS  
GPS SURVEY MARK DESCRIPTION**

GPS CONTROL BY:  
DENI ASSOCIATES, INC.  
FORT MYERS, FLORIDA

NORTH & EAST FORT MYERS  
WATER QUALITY  
LEE COUNTY, FLORIDA

DESIGNATION           A127           GPS No.           A127           COUNTY           LEE           STATE           FLORIDA          

LOCATED IN SECTION           24           TWP           43           RGE           25           USGS QUAD MAP           FORT MYERS          

TO REACH FROM THE INTERSECTION OF S.R. 78 ( BAYSHORE RD. ) & I-75; GO E'LY ON S.R. 78 FOR 3.1 +/- MILES  
TO THE ENTRANCE OF LEE CIVIC CENTER; THEN GO N'LY 0.15 +/- MILE, PASSING THROUGH PARKING  
BOOTHES, TO E-W ROAD; THEN GO W'LY 0.05 +/- MILE TO BEGINNING OF CURVE LEFT AND MARK IN GRASS AREA  
ON NORTH SIDE OF ROAD; 9.6' N'LY FROM BACK OF CURB AT NORTH SIDE OF ROAD; 33.9' ESE'LY OF  
CHISELED "X" AT TOP OF W'LY END OF 15" RCP; 31.5' WSW'LY OF CHISELED "X" AT TOP OF E'LY END OF 15" RCP.

MARK           3-1/4" LEE COUNTY PUBLIC WORKS ALUMINUM DISK IN CONCRETE          

MARK EXISTING       VALUES AS PUBLISHED BY \_\_\_\_\_  
 MARK SET             VALUES ESTABLISHED BY           DENI ASSOCIATES, INC.           DATE           2000          

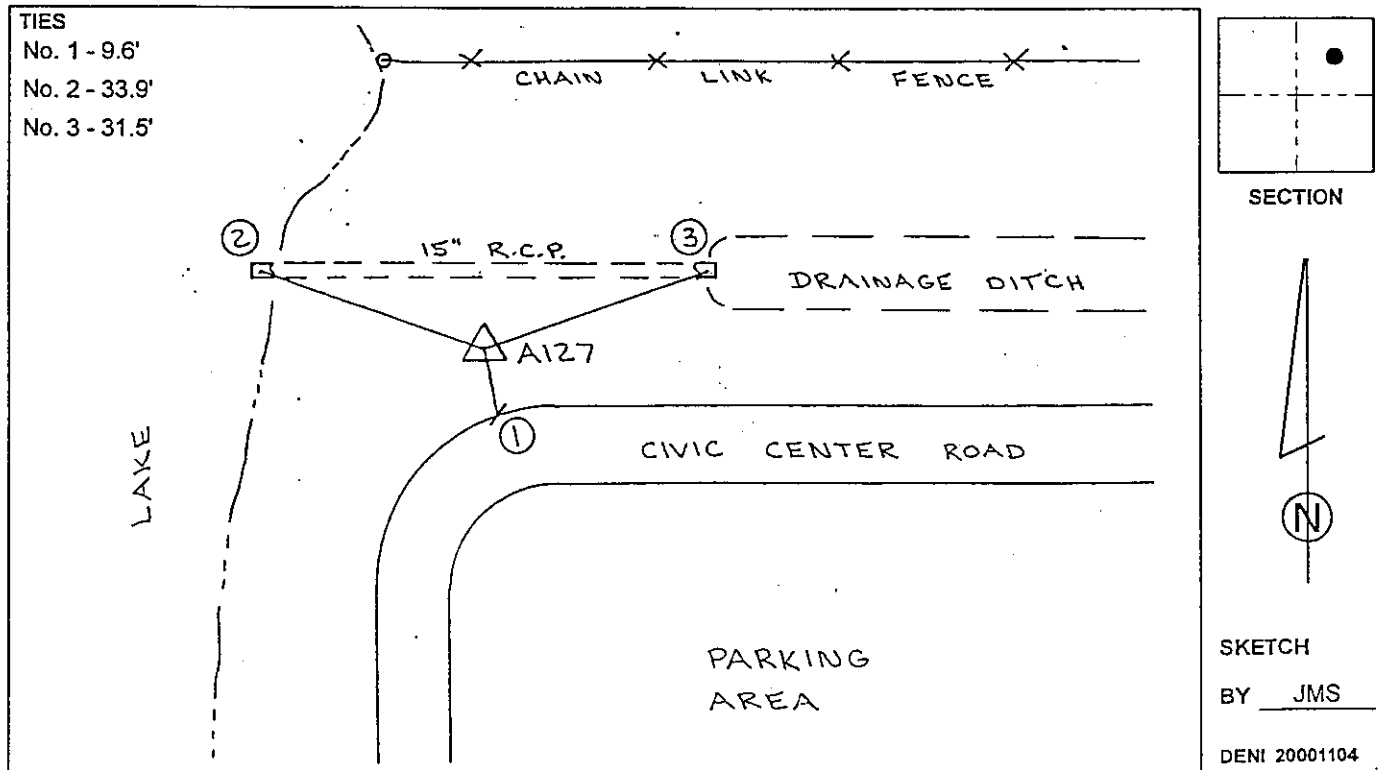
HORIZONTAL VALUES ORIGINATED ON ORDER "B" FLORIDA HIGH ACCURACY REFERENCE NETWORK (HARN) CONTROL ESTABLISHED BY THE NATIONAL GEODETIC SURVEY AND BASED ON THE NORTH AMERICAN DATUM OF 1983, 1990 ADJUSTMENT.

FLORIDA COORDINATE SYSTEM: TRANSVERSE MERCATOR, WEST ZONE      SCALE FACTOR:           0.99994794          

COORDINATES:	US FEET	METERS		
NORTHING (Y)	<u>          868151.043          </u>	<u>          264612.967          </u>	LATITUDE	<u>          N 26° 43' 18.81896"          </u>
EASTING (X)	<u>          732950.627          </u>	<u>          223403.798          </u>	LONGITUDE	<u>          W 81° 45' 53.16307"          </u>

VERTICAL VALUES ORIGINATED ON VERTICAL CONTROL ESTABLISHED BY THE NATIONAL GEODETIC SURVEY AND BASED ON THE NATIONAL GEODETIC VERTICAL DATUM OF 1929 (NGVD29)      THE NORTH AMERICAN VERTICAL DATUM OF 1988 (NAVD88)

ELEVATION (US FEET)	<u>          5.66          </u>	ELEVATION (US FEET)	<u>          4.48          </u>
ELEVATION (METERS)	<u>          1.725          </u>	ELEVATION (METERS)	<u>          1.364          </u>



490