

**LEE COUNTY PUBLIC WORKS  
GPS SURVEY MARK DESCRIPTION**

GPS CONTROL BY:  
DENI ASSOCIATES, INC.  
FORT MYERS, FLORIDA

NORTH & EAST FORT MYERS  
WATER QUALITY  
LEE COUNTY, FLORIDA

DESIGNATION           A126           GPS No.   A126   COUNTY   LEE   STATE   FLORIDA    
 LOCATED IN SECTION   14   TWP   43   RGE   25   USGS QUAD MAP           FORT MYERS            
 TO REACH FROM THE INTERSECTION OF S.R. 78 (BAYSHORE RD.) & PALM CREEK DRIVE; GO NORTH ON PALM  
CREEK DRIVE 1.5 +/- MILES TO INT. WITH DEAL RD. AND MARK. MARK IS LOCATED UNDER POWER LINES ON  
NORTH SIDE OF DEAL RD.; 3.0' SOUTH OF E-W FENCE LINE; 57.0' EAST OF CENTERLINE EXTENDED OF PALM  
CREEK DRIVE; 52.5' NORTH OF CENTERLINE OF MOST WLY CONCRETE POWER POLE.

MARK           3-1/4" LEE COUNTY PUBLIC WORKS ALUMINUM DISK IN CONCRETE          

MARK EXISTING     VALUES AS PUBLISHED BY \_\_\_\_\_  
 MARK SET         VALUES ESTABLISHED BY           DENI ASSOCIATES, INC.           DATE           2000          

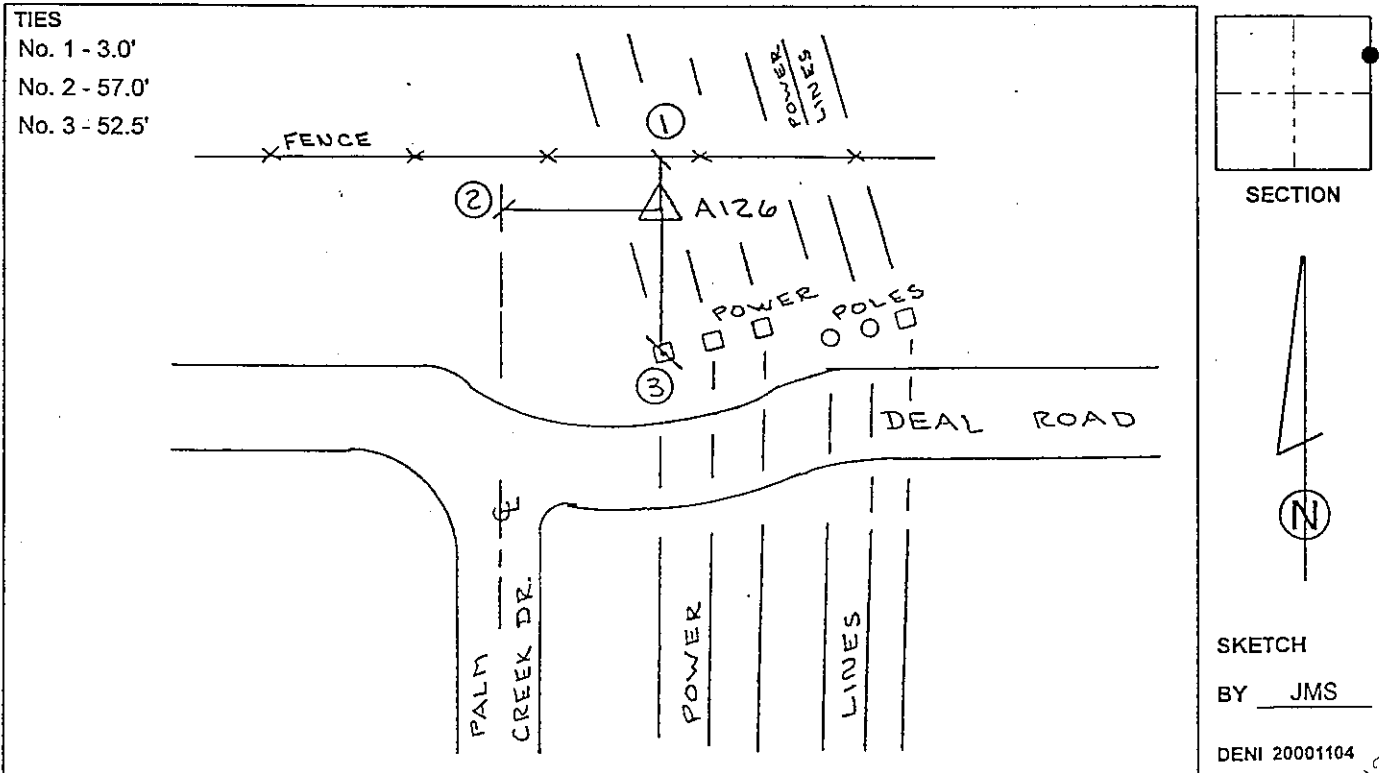
HORIZONTAL VALUES ORIGINATED ON ORDER "B" FLORIDA HIGH ACCURACY REFERENCE NETWORK (HARN) CONTROL ESTABLISHED BY THE NATIONAL GEODETIC SURVEY AND BASED ON THE NORTH AMERICAN DATUM OF 1983, 1990 ADJUSTMENT.

FLORIDA COORDINATE SYSTEM: TRANSVERSE MERCATOR, WEST ZONE    SCALE FACTOR:           0.99994724          

COORDINATES:	US FEET	METERS		
NORTHING (Y)	<u>          873565.953          </u>	<u>          266263.435          </u>	LATITUDE	<u>          N 26° 44' 12.51916"          </u>
EASTING (X)	<u>          728916.839          </u>	<u>          222174.297          </u>	LONGITUDE	<u>          W 81° 46' 37.54623"          </u>

VERTICAL VALUES ORIGINATED ON VERTICAL CONTROL ESTABLISHED BY THE NATIONAL GEODETIC SURVEY AND BASED ON THE NATIONAL GEODETIC VERTICAL DATUM OF 1929 (NGVD29)    THE NORTH AMERICAN VERTICAL DATUM OF 1988 (NAVD88)

ELEVATION (US FEET)	<u>          19.89          </u>	ELEVATION (US FEET)	<u>          18.71          </u>
ELEVATION (METERS)	<u>          6.062          </u>	ELEVATION (METERS)	<u>          5.703          </u>



439