

**LEE COUNTY PUBLIC WORKS
GPS SURVEY MARK DESCRIPTION**

GPS CONTROL BY:
DENI ASSOCIATES, INC.
FORT MYERS, FLORIDA

NORTH & EAST FORT MYERS
WATER QUALITY
LEE COUNTY, FLORIDA

DESIGNATION 5107 GPS No. A123 COUNTY LEE STATE FLORIDA

LOCATED IN SECTION 15 TWP 43 RGE 26 USGS QUAD MAP OLGA

TO REACH FROM THE N'LY INTERSECTION OF S.R. 78 (N. RIVER ROAD) & S.R. 31; GO E'LY ON S.R. 78
4.0 +/- MILES TO BRIDGE (#124093) OVER TELEGRAPH CREEK AND MARK. MARK IS LOCATED IN THE SOUTH
EDGE OF PAVEMENT OF S.R. 78 APPROXIMATELY 60' +/- WEST OF THE WEST END OF BRIDGE.

MARK 3-1/4" LEE COUNTY PUBLIC WORKS ALUMINUM DISK SET IN PAVEMENT

MARK EXISTING VALUES AS PUBLISHED BY _____

MARK SET VALUES ESTABLISHED BY DENI ASSOCIATES, INC. DATE 2000

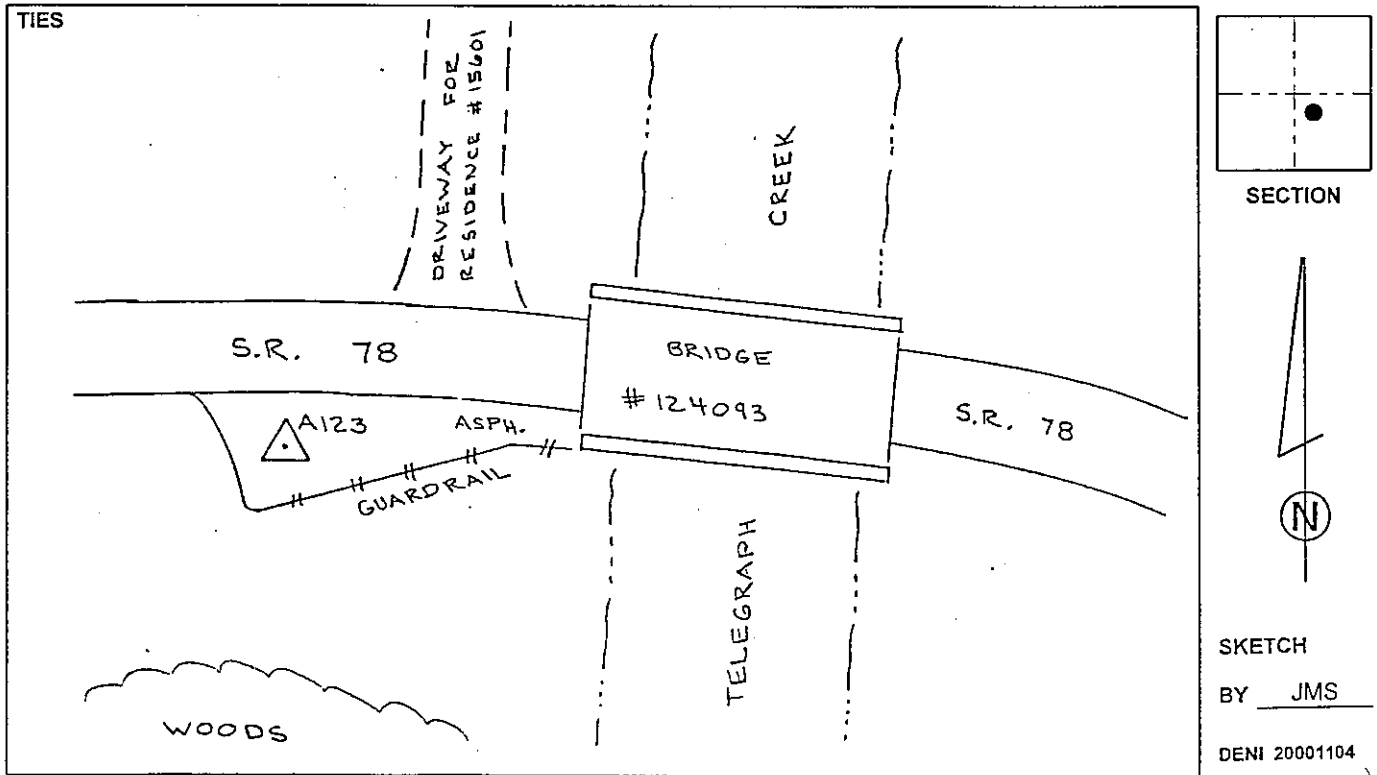
HORIZONTAL VALUES ORIGINATED ON ORDER "B" FLORIDA HIGH ACCURACY REFERENCE NETWORK (HARN) CONTROL ESTABLISHED BY THE NATIONAL GEODETIC SURVEY AND BASED ON THE NORTH AMERICAN DATUM OF 1983, 1990 ADJUSTMENT.

FLORIDA COORDINATE SYSTEM: TRANSVERSE MERCATOR, WEST ZONE SCALE FACTOR: 0.99995203

COORDINATES:	US FEET	METERS		
NORTHING (Y)	<u>871361.660</u>	<u>265591.565</u>	LATITUDE	<u>N 26° 43' 50.19147"</u>
EASTING (X)	<u>753445.786</u>	<u>229650.735</u>	LONGITUDE	<u>W 81° 42' 07.04489"</u>

VERTICAL VALUES ORIGINATED ON VERTICAL CONTROL ESTABLISHED BY THE NATIONAL GEODETIC SURVEY AND BASED ON THE NATIONAL GEODETIC VERTICAL DATUM OF 1929 (NGVD29) THE NORTH AMERICAN VERTICAL DATUM OF 1988 (NAVD88)

ELEVATION (US FEET)	<u>7.64</u>	ELEVATION (US FEET)	<u>6.41</u>
ELEVATION (METERS)	<u>2.329</u>	ELEVATION (METERS)	<u>1.955</u>

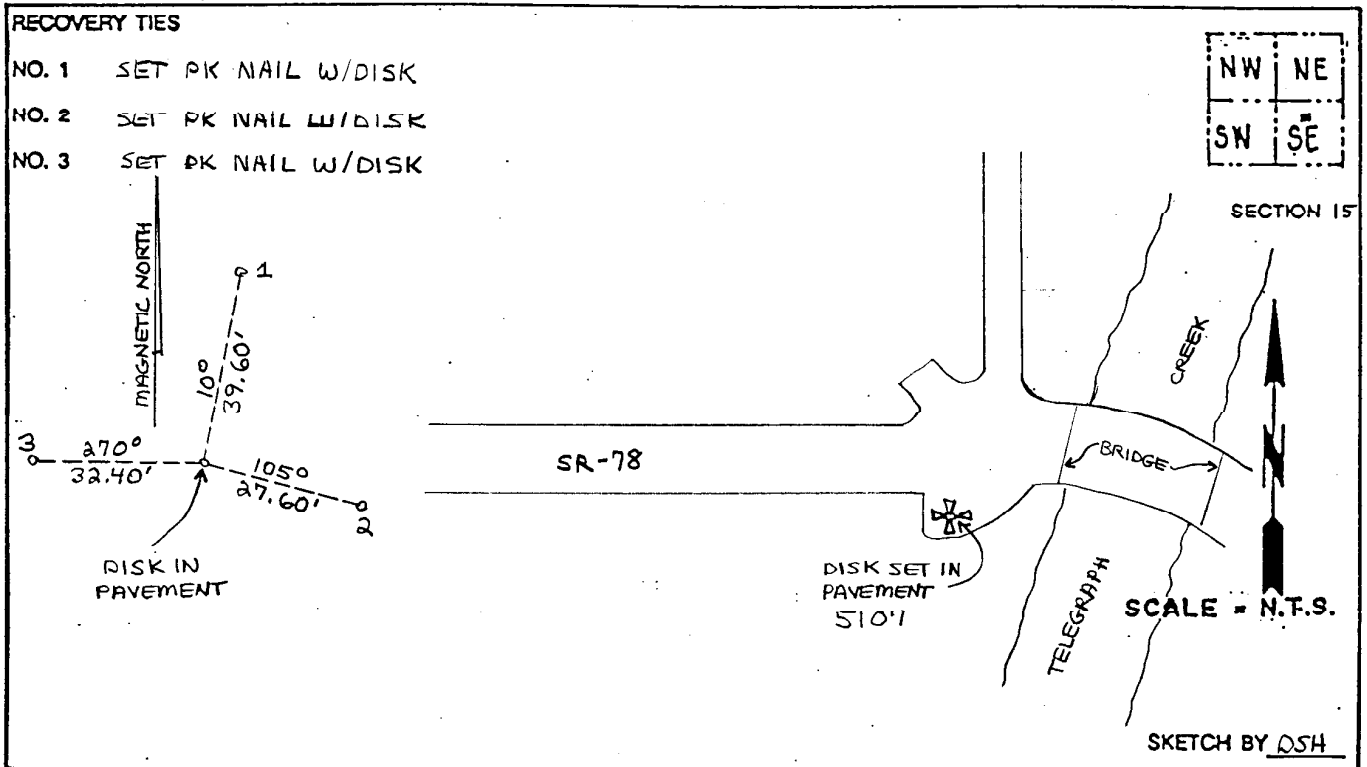


LEE COUNTY SURVEY MARK DESCRIPTION

1053

DESIGNATION 5107 COUNTY LEE STATE FL.
 LOCATED IN SEC 15 TWP 43 S RGE 26 E USGS QUAD MAP OLGA
 TO REACH SURVEY MARK:

TYPE OF 3/4" ALUMINUM LEE COUNTY SURVEY CONTROL MARK SET IN PAVEMENT
 MARK 5107 DATE SET APRIL 7 1998
 HORIZONTAL CONTROL ORIGINATED ON 2nd/1st ORDER CONTROL BY NATIONAL GEODETIC SURVEY (NGS)
 ON 1927 DATUM. ON 1983 (1990 GPS Adjustment) DATUM.
 COORDINATES (FT), 2nd ORDER COORDINATES (FT), 2nd ORDER
 NORTHING (M) N/A NORTHING (M) 871361.7647
 EASTING (M) N/A EASTING (M) 753445.9181
 GRID FLORIDA TRANSVERSE MERCATOR RECOVERED BY _____
 ZONE WEST DATE, CONDITION _____
 FIELD BOOK JEL # 2 PAGE 67



LEE COUNTY
SURVEY MARK DESCRIPTION

1205

DESIGNATION 107 COUNTY LEE STATE FL.
 LOCATED IN SEC 15 TWP 43 S RGE 26 E USGS QUAD MAP OLGA
 TO REACH SURVEY MARK:

TYPE OF 3/4" ALUMINUM LEE COUNTY SURVEY CONTROL MARK SET IN PAVEMENT

MARK 107 DATE SET APRIL 7 1998

HORIZONTAL CONTROL ORIGINATED ON 2nd/1st ORDER CONTROL BY NATIONAL GEODETIC SURVEY (NGS)

ON 1927 DATUM. ON 1983 (1990 GPS Adjustment) DATUM.

COORDINATES (FT), 2nd ORDER COORDINATES (FT), 2nd ORDER

NORTHING (M) N/A NORTHING (M) 871361.7647

EASTING (M) N/A EASTING (M) 753445.9181

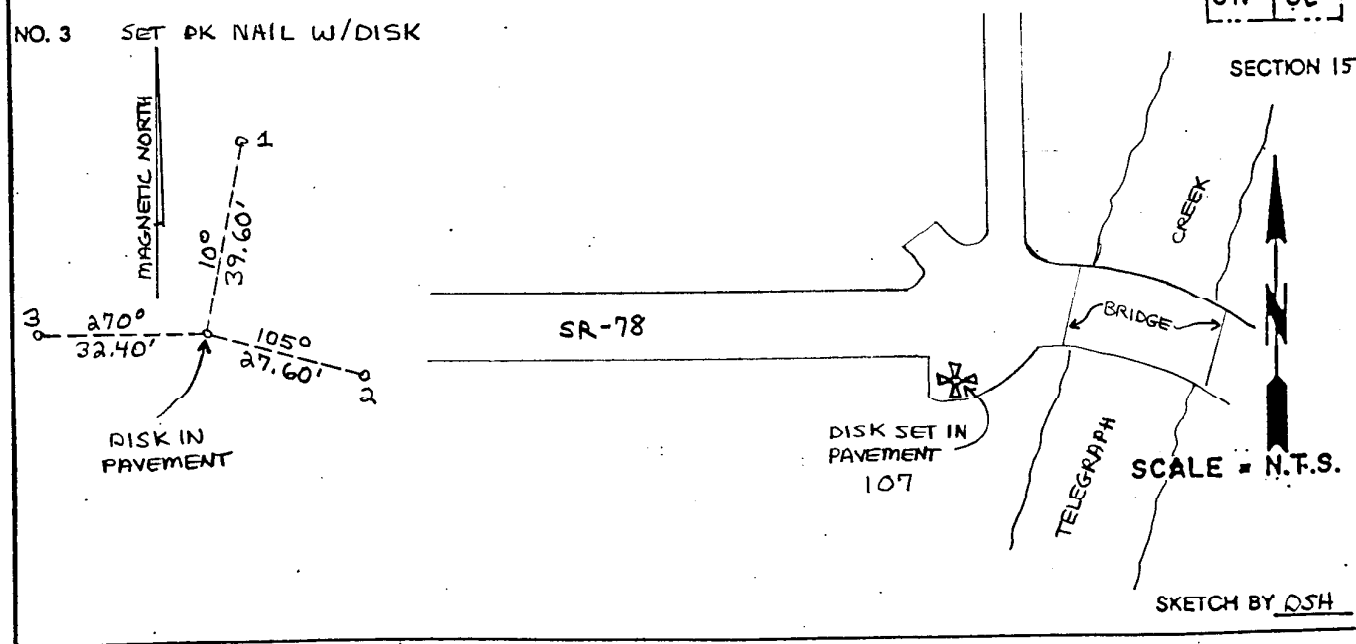
GRID FLORIDA TRANSVERSE MERCATOR RECOVERED BY _____

ZONE WEST DATE, CONDITION _____

FIELD BOOK JEL # 2 PAGE 67

RECOVERY TIES

- NO. 1 SET PK NAIL W/DISK
- NO. 2 SET PK NAIL W/DISK
- NO. 3 SET PK NAIL W/DISK



JOHNSON ENGINEERING, INC.
 CIVIL ENGINEERS - LAND SURVEYORS
 2158 JOHNSON STREET, POST OFFICE BOX 1550, FORT MYERS, FLORIDA, 33902-1550
 PHONE (941) 334-0046