

LEE COUNTY PUBLIC WORKS
GPS SURVEY MARK DESCRIPTION

GPS CONTROL BY:
DENI ASSOCIATES, INC.
FORT MYERS, FLORIDA

ESTERO BAY WATER QUALITY
LEE COUNTY, FLORIDA

DESIGNATION A014 GPS No. A014 COUNTY LEE STATE FLORIDA
 LOCATED IN SECTION 9 TWP 46 RGE 26 USGS QUAD MAP CORKSCREW N.W.
 TO REACH FROM THE INTERSECTION OF I-75 & ALICO RD.; GO EAST 4.4 +/- MILES TO A GRAVEL DRIVEWAY
SOUTH (#14120 & #14100) AND MARK. MARK IS LOCATED 10.5' EAST OF CENTERLINE OF GRAVEL DRIVEWAY;
47.5' SOUTH OF CENTERLINE OF ALICO RD.; 2.5' WEST OF N-S WIRE FENCE LINE ON EAST SIDE OF DRIVEWAY.
MARK IS IN LINE WITH A WLY PROJECTION OF AN E-W WIRE FENCE LINE ON SOUTH SIDE OF ALICO RD..
GRAVEL DRIVEWAY IS APPROXIMATELY 0.25 +/- MILE WEST OF CURVE SOUTH IN ALICO ROAD.

MARK 3-1/4" LEE COUNTY PUBLIC WORKS ALUMINUM DISK IN CONCRETE

MARK EXISTING VALUES AS PUBLISHED BY _____
 MARK SET VALUES ESTABLISHED BY DENI ASSOCIATES, INC. DATE 2000

HORIZONTAL VALUES ORIGINATED ON ORDER "B" FLORIDA HIGH ACCURACY REFERENCE NETWORK (HARN) CONTROL ESTABLISHED BY THE NATIONAL GEODETIC SURVEY AND BASED ON THE NORTH AMERICAN DATUM OF 1983, 1990 ADJUSTMENT.

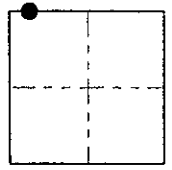
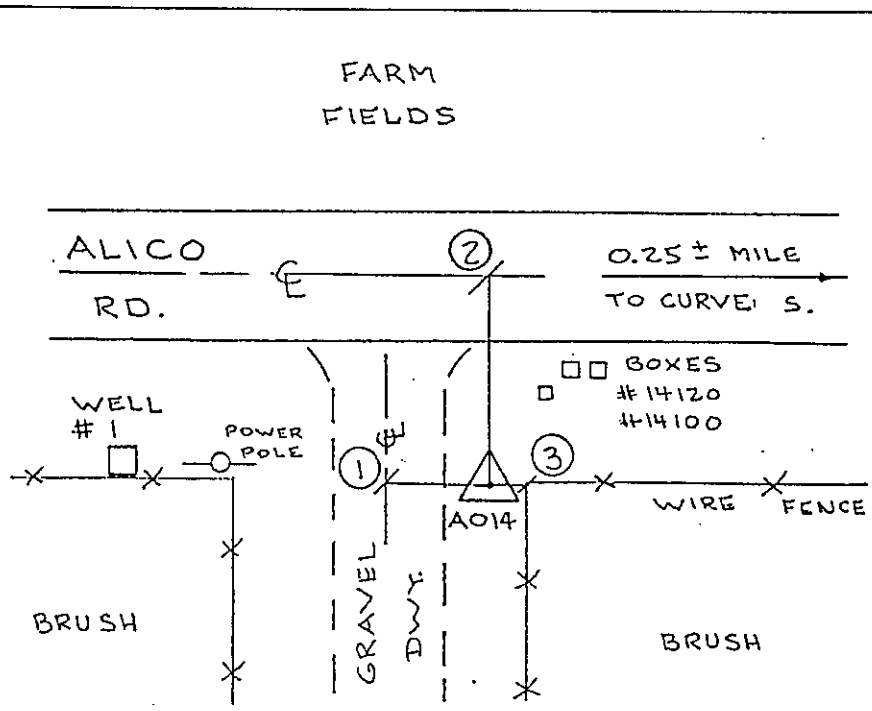
FLORIDA COORDINATE SYSTEM: TRANSVERSE MERCATOR, WEST ZONE SCALE FACTOR: 0.99995054

COORDINATES:	US FEET	METERS		
NORTHING (Y)	<u>785106.006</u>	<u>239300.789</u>	LATITUDE	<u>N 26° 29' 36.07291"</u>
EASTING (X)	<u>746541.960</u>	<u>227546.444</u>	LONGITUDE	<u>W 81° 43' 25.24622"</u>

VERTICAL VALUES ORIGINATED ON VERTICAL CONTROL ESTABLISHED BY THE NATIONAL GEODETIC SURVEY AND BASED ON THE NATIONAL GEODETIC VERTICAL DATUM OF 1929 (NGVD29) THE NORTH AMERICAN VERTICAL DATUM OF 1988 (NAVD88)

ELEVATION (US FEET)	<u>25.17</u>	ELEVATION (US FEET)	<u>24.00</u>
ELEVATION (METERS)	<u>7.672</u>	ELEVATION (METERS)	<u>7.315</u>

- TIES
 No.1 - 10.5'
 No.2 - 47.5'
 No.3 - 2.5'
 No.4



SECTION



SKETCH
 BY JMS

DENI 20000802