

LEE COUNTY PUBLIC WORKS  
GPS SURVEY MARK DESCRIPTION

GPS CONTROL BY:  
DENI ASSOCIATES, INC.  
FORT MYERS, FLORIDA

ESTERO BAY WATER QUALITY  
LEE COUNTY, FLORIDA

DESIGNATION A003 GPS No. A003 COUNTY LEE STATE FLORIDA  
 LOCATED IN SECTION 35 TWP 47 RGE 25 USGS QUAD MAP BONITA SPRINGS  
 TO REACH FROM THE INTERSECTION OF OLD U.S. 41 & TERRY ST.; GO SOUTH 0.1 +/- MILE TO INTERSECTION  
WITH GOODWIN ST. EAST AND MARK IN THE NORTHEAST CORNER OF INTERSECTION. MARK IS LOCATED  
AT THE SW CORNER OF CONCRETE SIDEWALK ON THE EAST SIDE OF OLD 41; AT POINT WHERE SAID  
CONCRETE SIDEWALK BECOMES BRICK SIDEWALK AND CURVES E'LY; NEAR BUILDING # 27121.

MARK 3-1/4" LEE COUNTY PUBLIC WORKS ALUMINUM DISK

MARK EXISTING     VALUES AS PUBLISHED BY \_\_\_\_\_  
 MARK SET         VALUES ESTABLISHED BY DENI ASSOCIATES, INC. DATE 2000

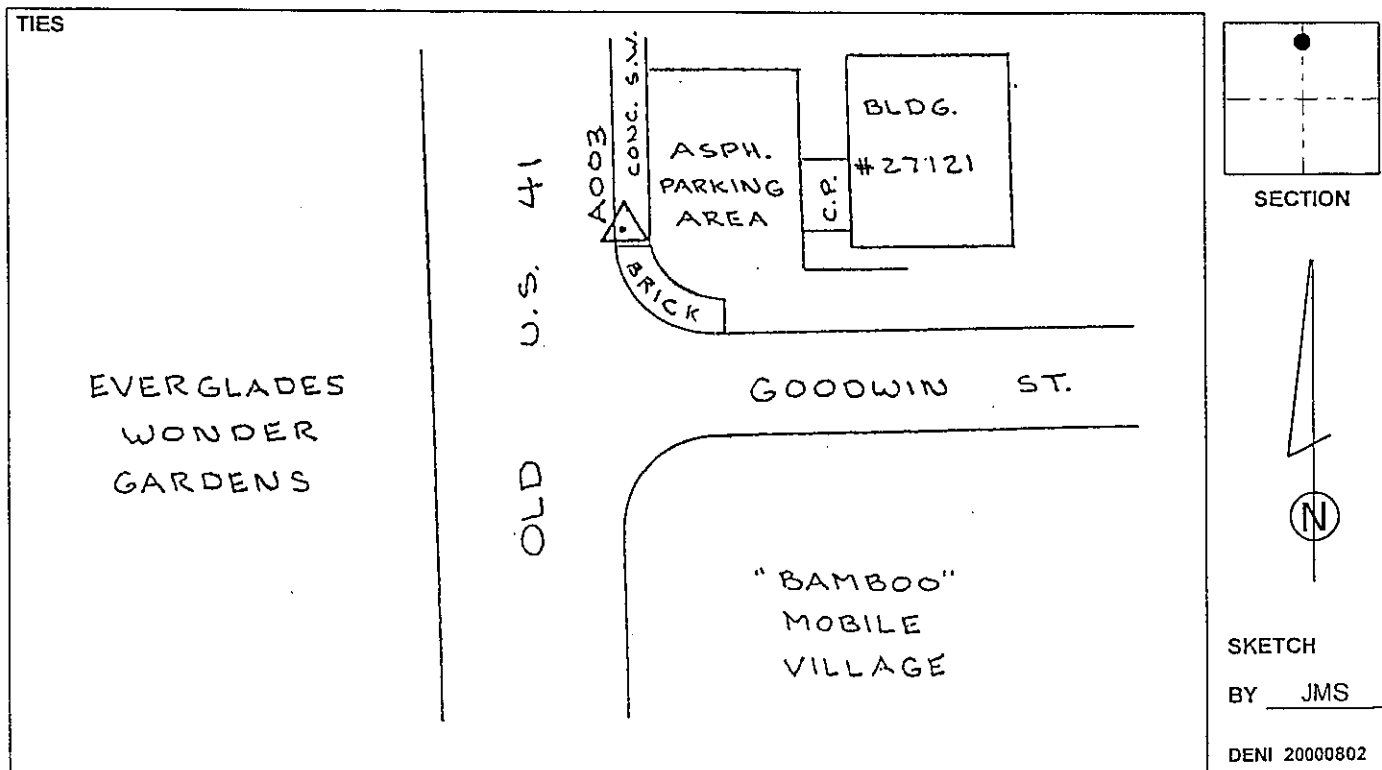
HORIZONTAL VALUES ORIGINATED ON ORDER "B" FLORIDA HIGH ACCURACY REFERENCE NETWORK (HARN) CONTROL ESTABLISHED BY THE NATIONAL GEODETIC SURVEY AND BASED ON THE NORTH AMERICAN DATUM OF 1983, 1990 ADJUSTMENT.

FLORIDA COORDINATE SYSTEM: TRANSVERSE MERCATOR, WEST ZONE SCALE FACTOR: 0.99994718

COORDINATES:	US FEET	METERS		
NORTHING (Y)	<u>730737.751</u>	<u>222729.312</u>	LATITUDE	<u>N 26° 20' 37.94002"</u>
EASTING (X)	<u>728549.954</u>	<u>222062.470</u>	LONGITUDE	<u>W 81° 46' 44.30860"</u>

VERTICAL VALUES ORIGINATED ON VERTICAL CONTROL ESTABLISHED BY THE NATIONAL GEODETIC SURVEY AND BASED ON THE NATIONAL GEODETIC VERTICAL DATUM OF 1929 (NGVD29) THE NORTH AMERICAN VERTICAL DATUM OF 1988 (NAVD88)

ELEVATION (US FEET)	<u>8.38</u>	ELEVATION (US FEET)	<u>7.17</u>
ELEVATION (METERS)	<u>2.554</u>	ELEVATION (METERS)	<u>2.185</u>



403