

LEE COUNTY  
SURVEY MARK DESCRIPTION

DESIGNATION: 806768 COUNTY: LEE STATE: FL

LOCATION IN SEC 32 TWP 47 S. RGE 27 E. USGS QUAD MAP ALVA SW

TO REACH SURVEY MARK:

TYPE OF MARK: 3-1/4" ALUMINUM LEE COUNTY SURVEY CONTROL MARK SET IN  
CONCRETE DATE SET: 3-13-00

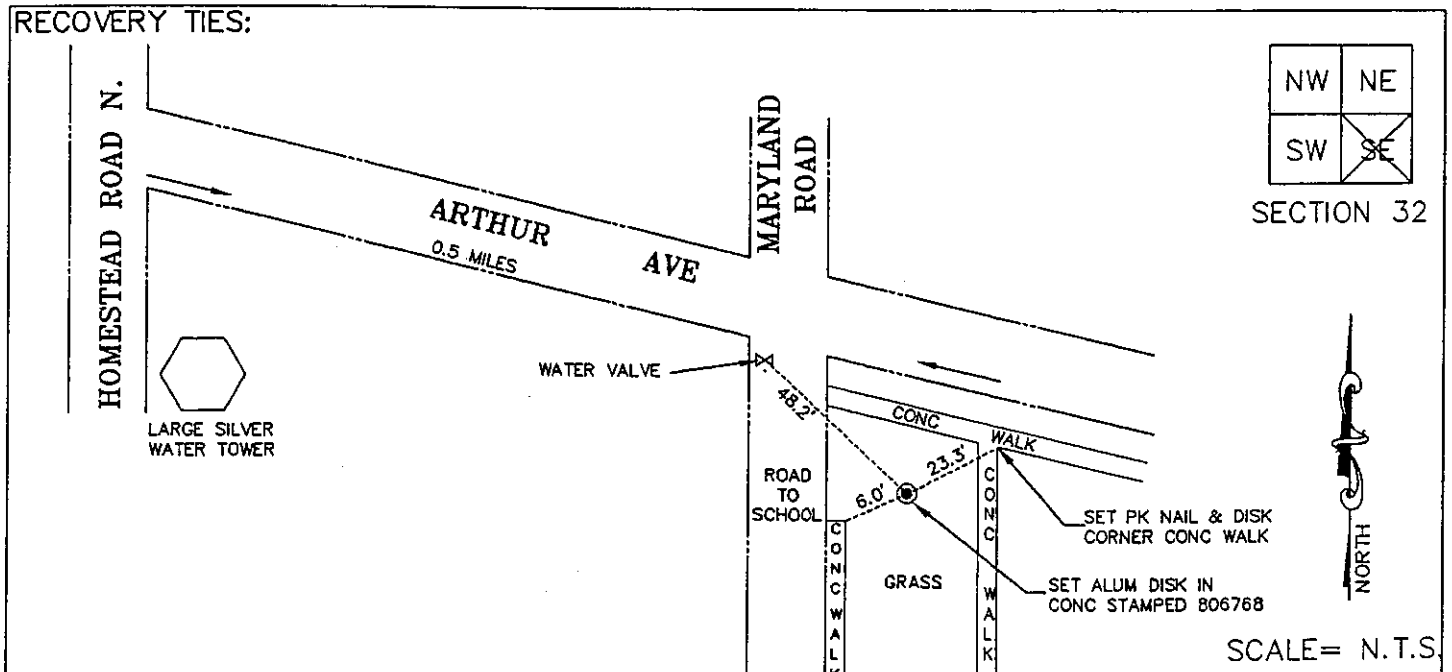
HORIZ. CONTROL ORIGINATED ON: 2nd/1st ORDER CONTROL BY: USC&GS / NGS  
ON 1927 DATUM. ON 1983 (1990 GPS ADJUSTMENT) DATUM.

COORDINATES (FT.) 2ND ORDER COORDINATES (FT.) 2ND ORDER  
NORTHING (Y): N/A NORTHING (Y): 823783.805  
EASTING (X): N/A EASTING (X): 775985.473

GRID: FLORIDA TRANSVERSE MERCATOR RECOVERED BY \_\_\_\_\_  
ZONE: WEST DATE, CONDITION \_\_\_\_\_

FIELD BOOK 2326 PAGE(S) 48

RECOVERY TIES:



NW	NE
SW	SE

SECTION 32