

LEE COUNTY  
SURVEY MARK DESCRIPTION

DESIGNATION: 80107109 COUNTY: LEE STATE: FL

LOCATION IN SEC 21 TWP 43 S. RGE 27 E. USGS QUAD MAP OLGA

TO REACH SURVEY MARK:

TYPE OF MARK: 3-1/4" ALUMINUM LEE COUNTY SURVEY CONTROL MARK SET IN  
CONCRETE DATE SET: 3-14-00

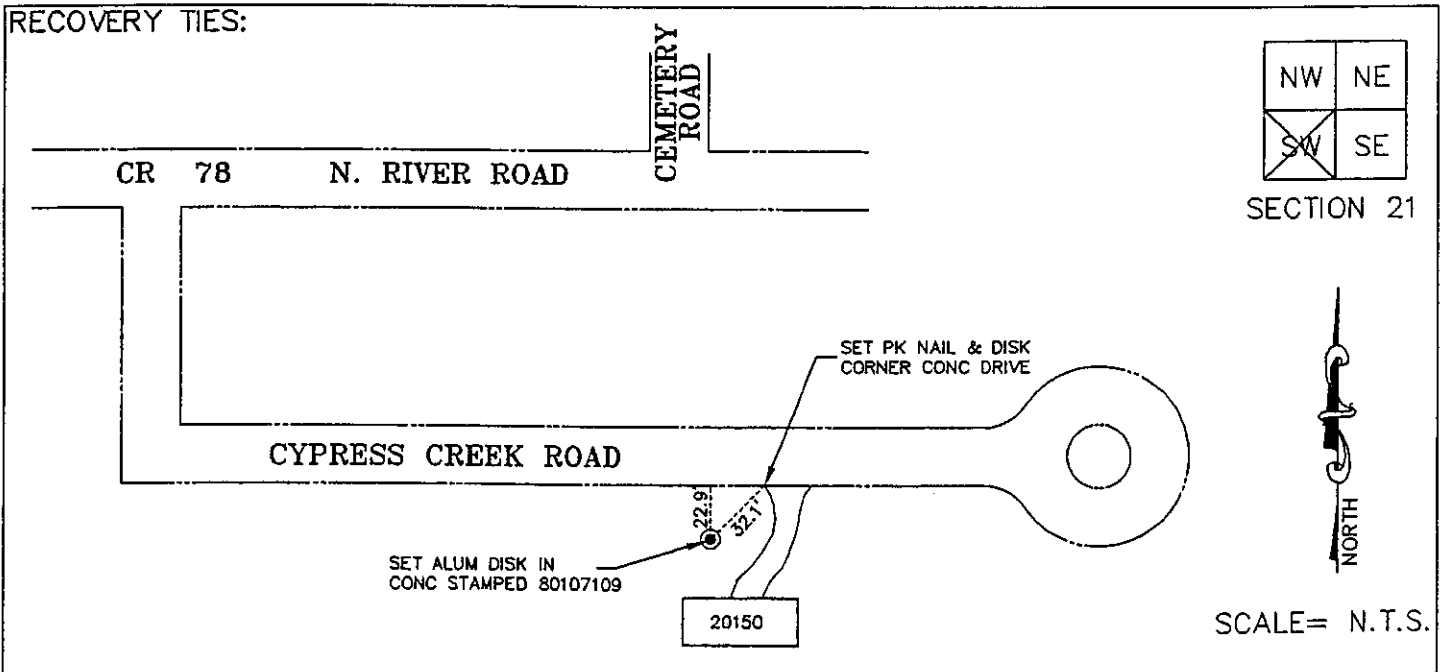
HORIZ. CONTROL ORIGINATED ON: 2nd/1st ORDER CONTROL BY: USC&GS / NGS  
ON 1927 DATUM. ON 1983 (1990 GPS ADJUSTMENT) DATUM.

COORDINATES (FT.) 2ND ORDER COORDINATES (FT.) 2ND ORDER  
NORTHING (Y): N/A NORTHING (Y): 867670.495  
EASTING (X): N/A EASTING (X): 777154.416

GRID: FLORIDA TRANSVERSE MERCATOR RECOVERED BY \_\_\_\_\_  
ZONE: WEST DATE, CONDITION \_\_\_\_\_

FIELD BOOK 2326 PAGE(S) 54

RECOVERY TIES:



JOHNSON ENGINEERING, INC.  
ENGINEERS, SURVEYORS AND ECOLOGISTS

2158 JOHNSON ST., POST OFFICE BOX 1550. FORT MYERS. FLORIDA 33902-1550

398