

LEE COUNTY  
SURVEY MARK DESCRIPTION

DESIGNATION: 70145147 COUNTY: LEE STATE: FL

LOCATION IN SEC. 17 TWP. 43 S. RGE. 26 E. USGS QUAD MAP OLGA

TO REACH SURVEY MARK:

TYPE OF MARK: 3-1/4" ALUMINUM LEE COUNTY SURVEY CONTROL MARK SET IN  
CONCRETE DATE SET: 3-14-00

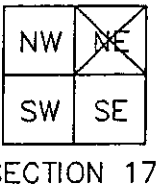
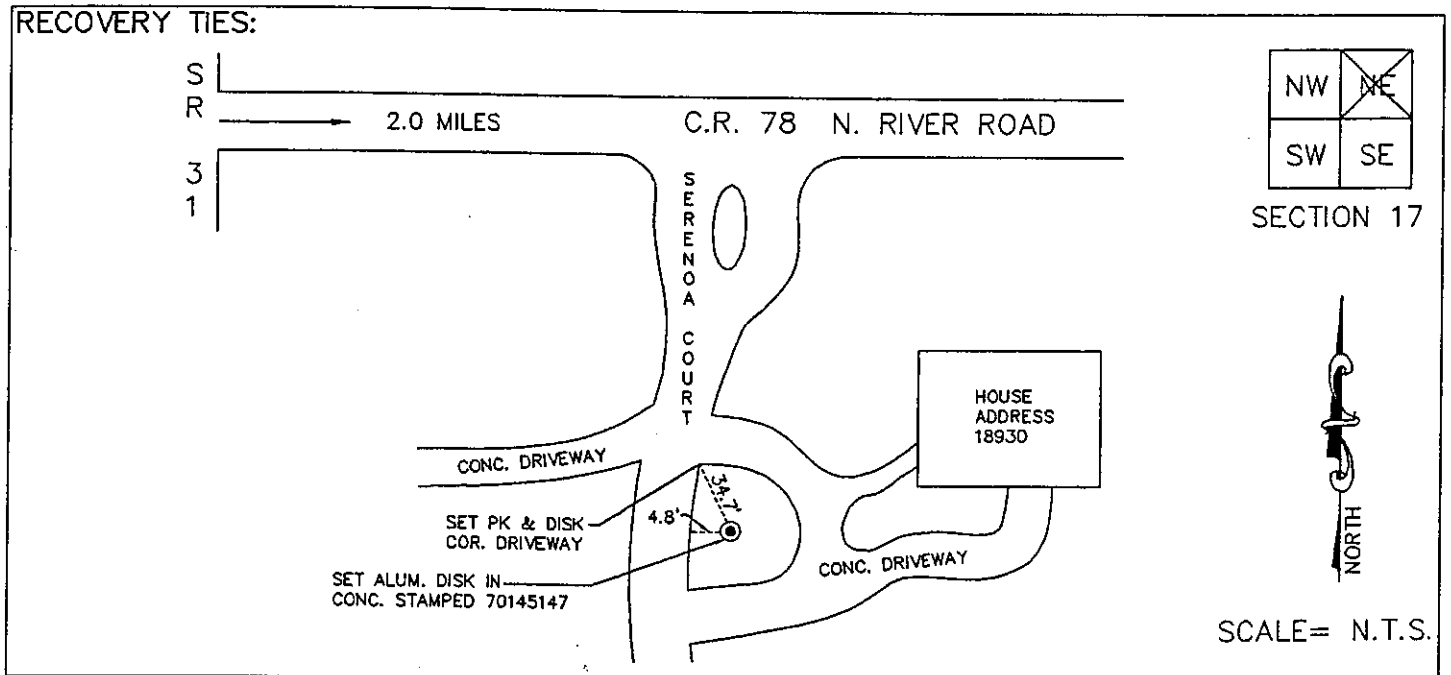
HORIZ. CONTROL ORIGINATED ON: 2nd/1st ORDER CONTROL BY: USC&GS / NGS  
ON 1927 DATUM. ON 1983 (1990 GPS ADJUSTMENT) DATUM.

COORDINATES (FT.) 2ND ORDER COORDINATES (FT.) 2ND ORDER  
NORTHING (Y): N/A NORTHING (Y): 873761.657  
EASTING (X): N/A EASTING (X): 743956.204

GRID: FLORIDA TRANSVERSE MERCATOR RECOVERED BY \_\_\_\_\_  
ZONE: WEST DATE, CONDITION \_\_\_\_\_

FIELD BOOK 2326 PAGE(S) 53

RECOVERY TIES:



SCALE = N.T.S.

**JOHNSON ENGINEERING, INC.**  
ENGINEERS, SURVEYORS AND ECOLOGISTS

397