

LEE COUNTY SURVEY MARK DESCRIPTION

DESIGNATION: 501113 COUNTY: LEE STATE: FL

LOCATION IN SEC 33 TWP 46 S. RGE 24 E. USGS QUAD MAP FORT MYERS BEACH

TO REACH SURVEY MARK:

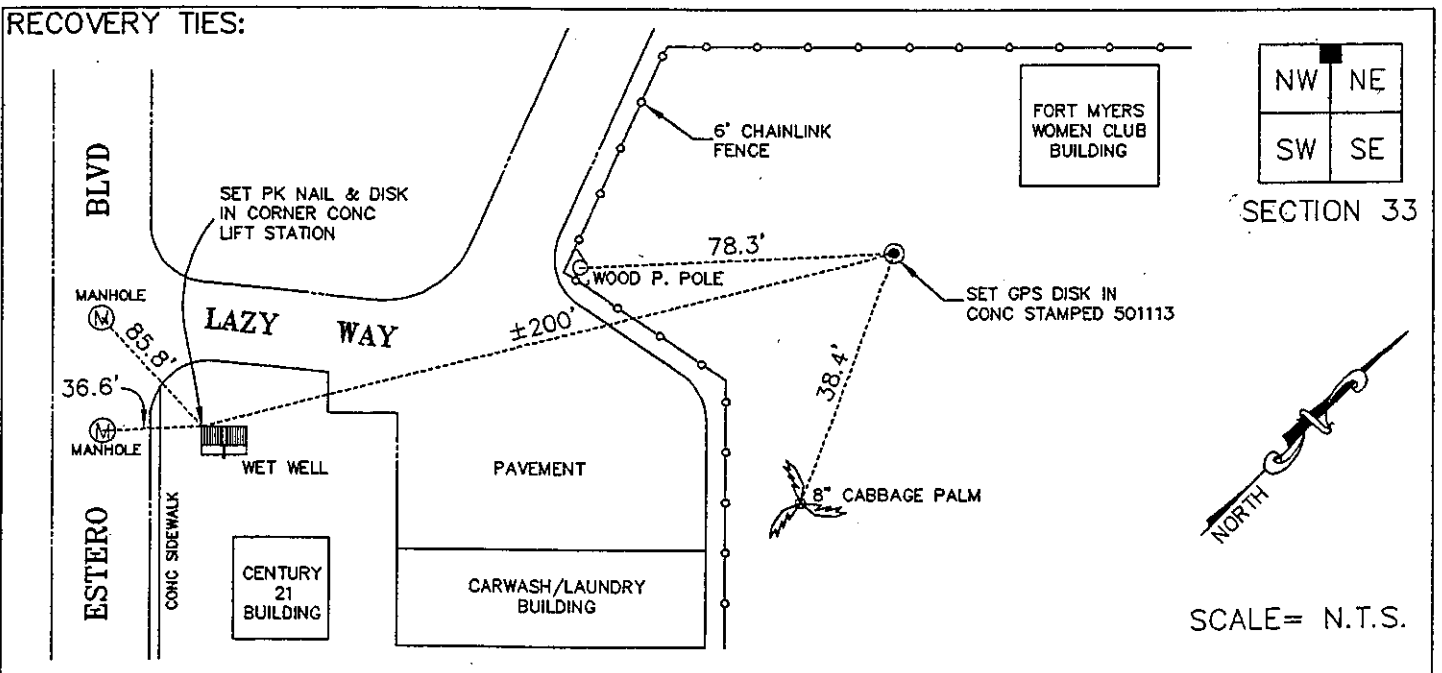
TYPE OF MARK: 3-1/4" ALUMINUM LEE COUNTY SURVEY CONTROL MARK SET IN
CONCRETE DATE SET: 3-13-00

HORIZ. CONTROL ORIGINATED ON: 2nd/1st ORDER CONTROL BY: USC&GS / NGS
ON 1927 DATUM. ON 1983 (1990 GPS ADJUSTMENT) DATUM.

COORDINATES (FT.) 2ND ORDER COORDINATES (FT.) 2ND ORDER
NORTHING (Y): N/A NORTHING (Y): 761986.002
EASTING (X): N/A EASTING (X): 685025.770

GRID: FLORIDA TRANSVERSE MERCATOR RECOVERED BY _____
ZONE: WEST DATE, CONDITION _____

FIELD BOOK 2326 PAGE(S) 44



JOHNSON ENGINEERING, INC.
ENGINEERS, SURVEYORS AND ECOLOGISTS

2158 JOHNSON ST., POST OFFICE BOX 1550, FORT MYERS, FLORIDA 33902-1550

390