

# LEE COUNTY SURVEY MARK DESCRIPTION

DESIGNATION: 403840 COUNTY: LEE STATE: FL

LOCATION IN SEC. 10 TWP 45 S. RGE 23 E. USGS QUAD MAP PINE ISLAND CENTER

TO REACH SURVEY MARK:

TYPE OF MARK: 3-1/4" ALUMINUM LEE COUNTY SURVEY CONTROL MARK SET IN  
CONCRETE DATE SET: 3-15-00

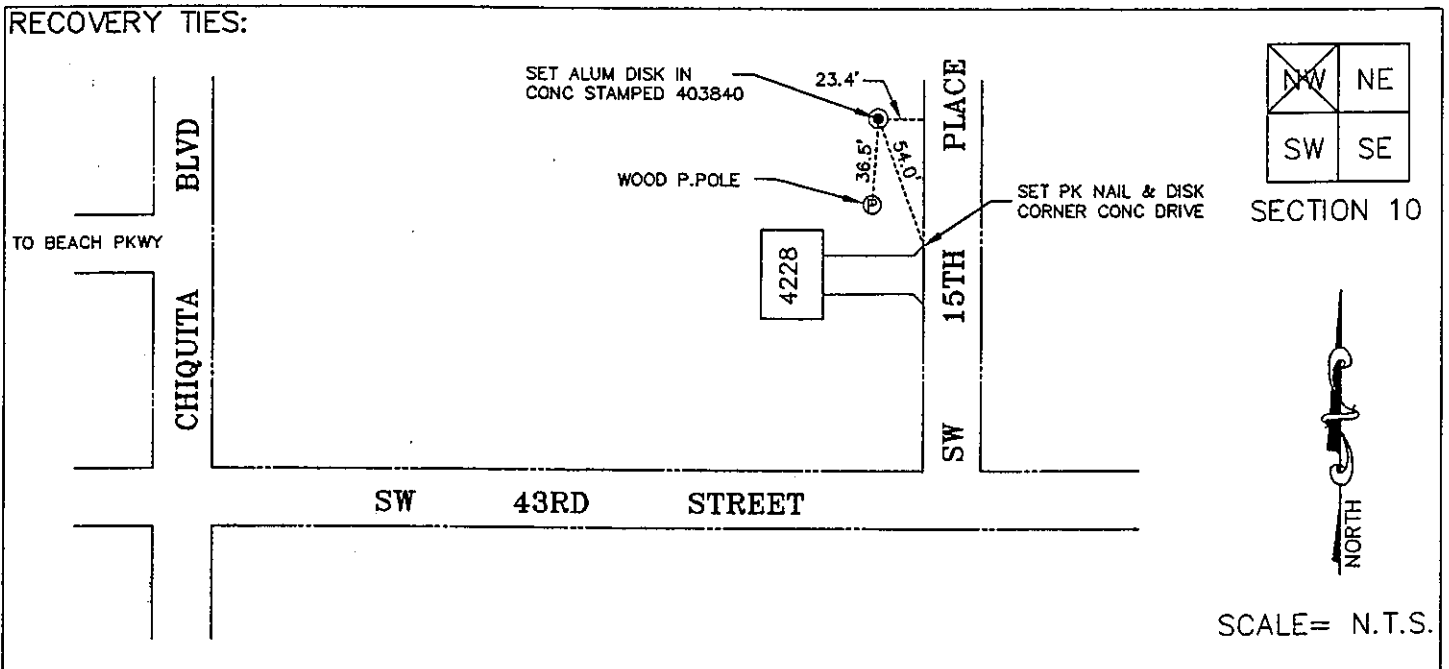
HORIZ. CONTROL ORIGINATED ON: 2nd/1st ORDER CONTROL BY: USC&GS / NGS  
ON 1927 DATUM. ON 1983 (1990 GPS ADJUSTMENT) DATUM.

COORDINATES (FT.) <u>2ND ORDER</u>	COORDINATES (FT.) <u>2ND ORDER</u>
NORTHING (Y): <u>N/A</u>	NORTHING (Y): <u>813917.744</u>
EASTING (X): <u>N/A</u>	EASTING (X): <u>654234.522</u>

GRID: FLORIDA TRANSVERSE MERCATOR RECOVERED BY \_\_\_\_\_  
ZONE: WEST DATE, CONDITION \_\_\_\_\_

FIELD BOOK 2326 PAGE(S) 62

**RECOVERY TIES:**



**JOHNSON ENGINEERING, INC.**  
ENGINEERS, SURVEYORS AND ECOLOGISTS