

LEE COUNTY
SURVEY MARK DESCRIPTION

DESIGNATION: 331012 COUNTY: LEE STATE: FL

LOCATION IN SEC 24 TWP 46 S. RGE 22 E. USGS QUAD MAP SANIBEL, FLA

TO REACH SURVEY MARK:

TYPE OF MARK: 3-1/4" ALUMINUM LEE COUNTY SURVEY CONTROL MARK SET IN
CONCRETE DATE SET: 3-8-00

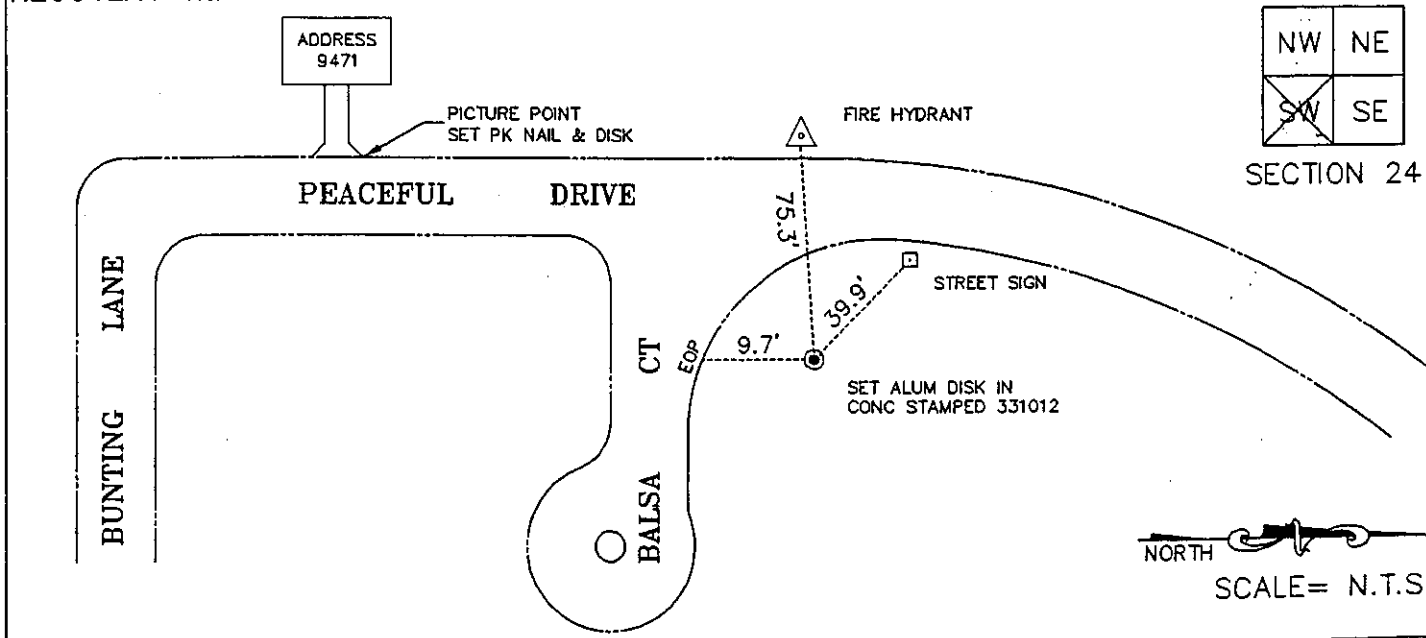
HORIZ. CONTROL ORIGINATED ON: 2nd/1st ORDER CONTROL BY: USC&GS / NGS
ON 1927 DATUM. ON 1983 (1990 GPS ADJUSTMENT) DATUM.

COORDINATES (FT.) 2ND ORDER COORDINATES (FT.) 2ND ORDER
NORTHING (Y): N/A NORTHING (Y): 767724.915
EASTING (X): N/A EASTING (X): 634373.696

GRID: FLORIDA TRANSVERSE MERCATOR RECOVERED BY _____
ZONE: WEST DATE, CONDITION _____

FIELD BOOK 2326 PAGE(S) 42

RECOVERY TIES:



JOHNSON ENGINEERING, INC.
ENGINEERS, SURVEYORS AND ECOLOGISTS

384